

PROVINCETOWN, MASSACHUSETTS

AL-5313 (FAA)

25163

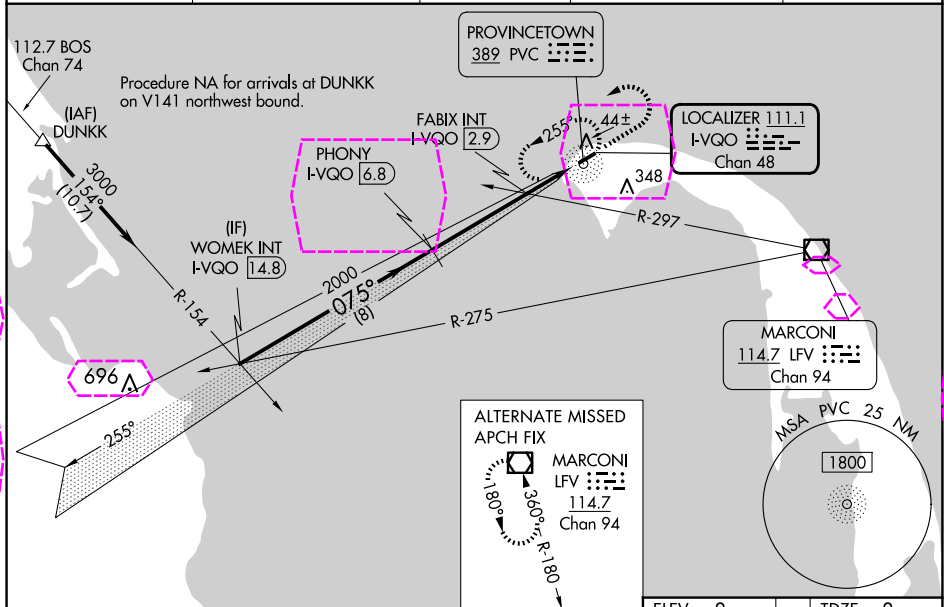
LOC/DME I-VQO 111.1 Chan 48	APP CRS 075°	Rwy Ldg 3502 TDZE 8 Apt Elev 8
---	------------------------	---

ILS or LOC RWY 7

PROVINCETOWN MUNI (PVC)

DME required for LOC only, ADF.	MALSF 	MISSED APPROACH: Climb to 800 then climbing left turn to 2000 direct PVC NDB and hold, continue climb-in-hold to 2000.
NA Inop table does not apply to S-ILS 7. When local altimeter setting not received, use Hyannis altimeter setting and increase all DA to 271 and all MDA 80 feet: increase S-LOC 7 and FABIX fix minimums S-LOC 7 all Cats visibility ¼ SM. VDP NA when using Hyannis altimeter setting. For inop ALS when using Hyannis altimeter setting, increase S-ILS 7 all Cats visibility to ¾ SM.		

AWOS-3PT 119.275	BOSTON APP CON 118.2	CLNC DEL 120.65	UNICOM 122.8 (CTAF)	122.85
----------------------------	--------------------------------	---------------------------	-------------------------------	---------------



	WOMEK INT I-VQO [14.8]	PHONY I-VQO [6.8]	FABIX INT I-VQO [2.9]	800	2000	PVC	ELEV 8	TDZE 8
	3000	2000	2000	*I-VQO [1.5]	I-VQO [0.7]	*LOC only		
	GS 3.00° TCH 40	# 740 using Hyannis altimeter setting	# 660					
CATEGORY	A	B	C	D				
S-ILS 7	208-¾	200 (200-¾)		NA				
S-LOC 7	660-¾	652 (700-¾)		NA				
CIRCLING	660-1	652 (700-1)		NA				
FABIX FIX MINIMUMS (DUAL VOR RECEIVERS OR DME REQUIRED)								
S-LOC 7	320-¾	312 (400-¾)		NA				
CIRCLING	460-1	660-1		NA				
	452 (500-1)	652 (700-1)						

REIL Rwy 25

HIRL Rwy 7-25

FAF to MAP 6.1 NM

Knots	60	90	120	150	180
Min:Sec	6:06	4:04	3:03	2:26	2:02

PROVINCETOWN, MASSACHUSETTS

Amdr **9A 06DEC18**

42°04'N-70°13'W

PROVINCETOWN MUNI (PVC)

ILS or LOC RWY 7

PROVINCETOWN, MASSACHUSETTS

AL-5313 (FAA)

25219

LOC/DME I-VQO 111.1 Chan 48	APP CRS 075°	Rwy Ldg TDZE 3502 8 Apt Elev 8
---	------------------------	--

ILS or LOC RWY 7
PROVINCETOWN MUNI (PVC)

ADF required. DME required for LOC only.

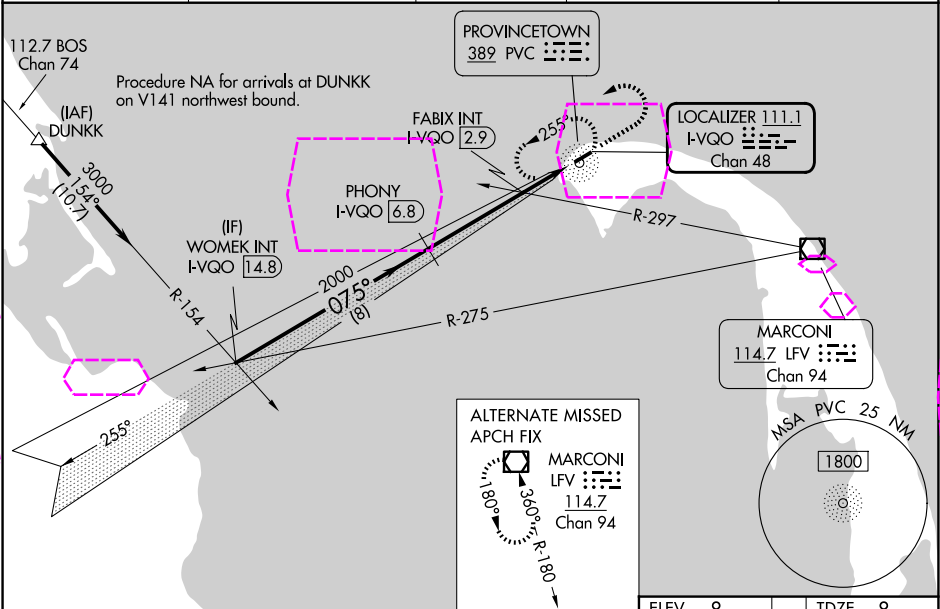
NA Circling Rwy 25 NA at night. VDP NA when using HYA altimeter setting. Inop table does not apply to S-ILS 7. For inop ALS when using HYA altimeter setting, increase S-ILS 7 all Cats visibility to $\frac{3}{8}$ SM. When local altimeter setting not received, use HYA altimeter setting and increase all S-ILS 7 to 271 feet and all MDA 80 feet.

MALSF



MISSED APPROACH: Climb to 800 then climbing left turn to 2000 direct PVC NDB and hold, continue climb-in-hold to 2000.

AWOS-3PT 119.275	BOSTON APP CON 118.2	CLNC DEL 120.65	UNICOM 122.8 (CTAF)	122.85
----------------------------	--------------------------------	---------------------------	-------------------------------	---------------



	WOMEK INT I-VQO 14.8	PHONY I-VQO 6.8	FABIX INT I-VQO 2.9	I-VQO 1.5	I-VQO 0.7
	3000	2000	2000	2000	2000
	075°	075°	075°	075°	075°
	8 NM	3.9 NM	1.3 NM	0.9 NM	
CATEGORY	A	B	C	D	
S-ILS 7	208- $\frac{3}{4}$	200 (200- $\frac{3}{4}$)	NA		
S-LOC 7	660- $\frac{3}{4}$	652 (700- $\frac{3}{4}$)	NA		
CIRCLING	660-1	652 (700-1)	NA		
FABIX FIX MINIMUMS (DUAL VOR RECEIVERS OR DME REQUIRED)					
S-LOC 7	320- $\frac{3}{4}$	312 (400- $\frac{3}{4}$)	NA		
CIRCLING	460-1	660-1	NA		
	452 (500-1)	652 (700-1)			

ELEV	8	TDZE	8
REIL Rwy 25			
HIRL Rwy 7-25			
FAF to MAP 6.1 NM			
Knots	60	90	120 150 180
Min:Sec	6:06	4:04	3:03 2:26 2:02

PROVINCETOWN, MASSACHUSETTS

Amdr **9B 07AUG25**

42°04'N-70°13'W

PROVINCETOWN MUNI (PVC)
ILS or LOC RWY 7

NE-1, 07 AUG 2025 to 04 SEP 2025

NE-1, 07 AUG 2025 to 04 SEP 2025