

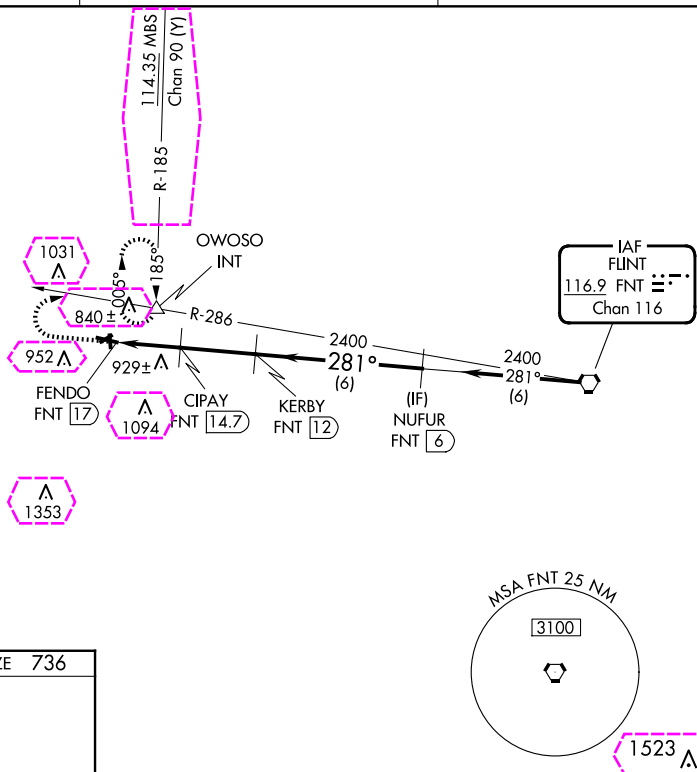
VORTAC FNT <b>116.9</b> Chan <b>116</b>	APP CRS <b>281°</b>	Rwy Ldg <b>4300</b> TDZE <b>736</b> Apt Elev <b>736</b>
---	------------------------	---

VOR/DME RWY 29  
OWOSSO COMMUNITY (RNP)

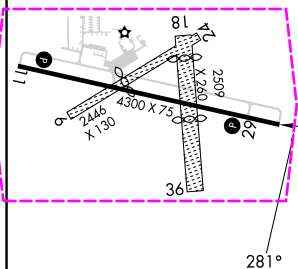
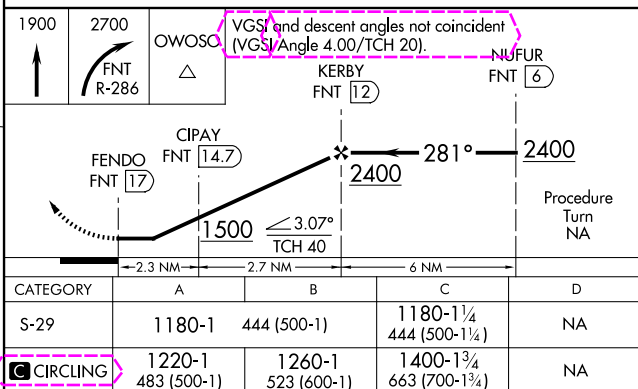
**A** Circling NA to Rwy 6, 18, 24 and 36. Rwy 29 helicopter visibility reduction below  $\frac{3}{4}$  SM NA. When local altimeter setting not received, use Flint altimeter setting and increase all MDA 60 feet and S-29 Cat C visibility  $\frac{1}{4}$  mile.

**MISSED APPROACH:** Climb to 1900 then climbing right turn to 2700 via FNT VORTAC R-286 to OWOSO INT and hold.

AWOS-3 <b>118.025</b>	GREAT LAKES APP CON ★ <b>128.55 257.9</b>	UNICOM <b>123.0 (CTAF) 0</b>
--------------------------	--	---------------------------------



ELEV 736		TDZE 736
----------	--	----------

REIL Rwy 11 and 29 **L**MIRL Rwy 11-29 **L**

OWOSSO, MICHIGAN

Amdt 1E 18JUN20

43°00'N-84°08'W

OWOSSO COMMUNITY (RNP)

VOR/DME RWY 29

EC-1, 10 JUL 2025 to 07 AUG 2025

OWOSSO COMMUNITY (RNP)  
VOR/DME RWY 29

EC-1, 07 AUG 2025 to 04 SEP 2025