

OWOSSO, MICHIGAN

AL-5312 (FAA)

25163

APP CRS	Rwy Ldg	4300
289°	TDZE	737
	Apt Elev	737

RNAV (GPS) RWY 29

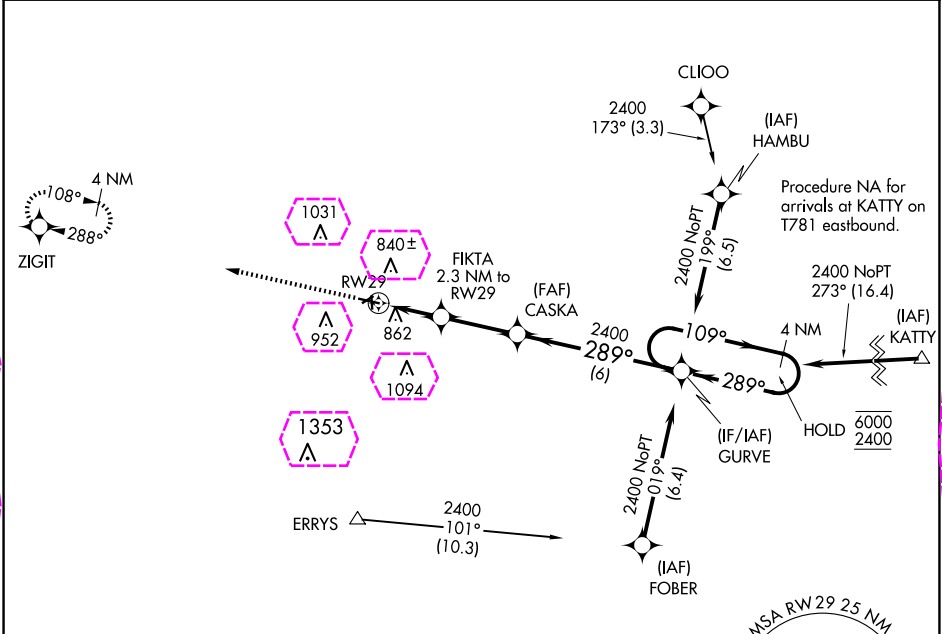
OWOSSO COMMUNITY (RNP)

RNP APCH:

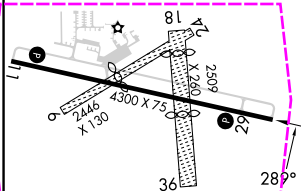
Circling NA to Rwys 6, 18, 24 and 36. Procedure NA at night. Rwy 29 helicopter visibility reduction below 3/4 SM NA.

MISSED APPROACH: Climb to 2600 direct ZIGIT and hold.

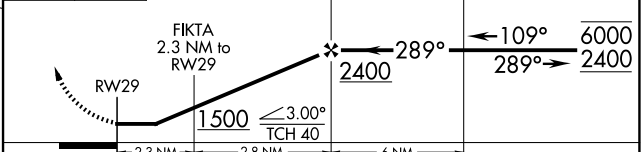
AWOS-3 118.025	GREAT LAKES APP CON ★ 128.55 257.9	UNICOM 123.0 (CTAF)
-------------------	---------------------------------------	------------------------



ELEV 737	TDZE 737
----------	----------



ZIGIT VGS and descent angles not coincident (VGS Angle 4.00/TCH 20). 4 NM Holding Pattern



CATEGORY	A	B	C	D
LNAV MDA	1120-1	383 (400-1)	1120-1 1/8 383 (400-1 1/8)	NA
CIRCLING	1220-1 483 (500-1)	1260-1 523 (600-1)	1400-1 3/4 663 (700-1 3/4)	NA

REIL Rws 11 and 29
MIRL Rwy 11-29

OWOSSO, MICHIGAN

Amdt 2 15AUG19

43°00'N-84°08'W

OWOSSO COMMUNITY (RNP)

RNAV (GPS) RWY 29

EC-1, 10 JUL 2025 to 07 AUG 2025

EC-1, 10 JUL 2025 to 07 AUG 2025

OWOSSO, MICHIGAN

AL-5312 (FAA)

25219

APP CRS	Rwy Ldg	4300
289°	TDZE	737
	Apt Elev	737

RNAV (GPS) RWY 29

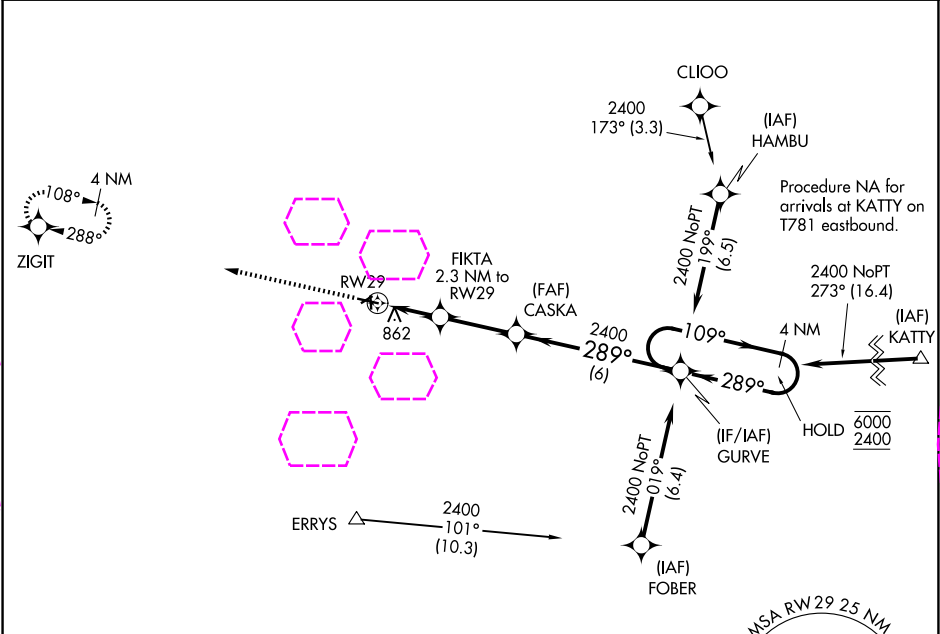
OWOSSO COMMUNITY (RNP)

RNP APCH:

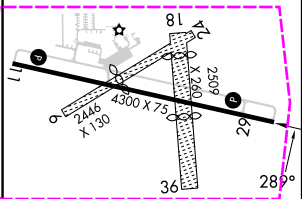
⚠ Circling NA to Rwys 6, 18, 24 and 36. Procedure NA at night. Rwy 29 helicopter visibility reduction below $\frac{3}{4}$ SM NA.

MISSED APPROACH: Climb to 2600 direct ZIGIT and hold.

AWOS-3 118.025	GREAT LAKES APP CON ★ 128.55 257.9	UNICOM 123.0 (CTAF) 0
-------------------	---------------------------------------	---------------------------------



ELEV 737	TDZE 737
----------	----------



2600	ZIGIT	VGSi and descent angles not coincident (VGSi Angle 3.00/TCH 40).		4 NM Holding Pattern
CATEGORY	A	B	C	D
LNAV MDA	1120-1	383 (400-1)	1120-1 $\frac{1}{8}$ 383 (400-1 $\frac{1}{8}$)	NA
CIRCLING	1220-1 483 (500-1)	1260-1 523 (600-1)	1400-1 $\frac{3}{4}$ 663 (700-1 $\frac{3}{4}$)	NA

REIL Rws 11 and 29 **0**
MIRL Rwy 11-29 **0**

OWOSSO, MICHIGAN
Amdt 2 15AUG19

43°00'N-84°08'W

OWOSSO COMMUNITY (RNP)

RNAV (GPS) RWY 29

EC-1, 07 AUG 2025 to 04 SEP 2025

EC-1, 07 AUG 2025 to 04 SEP 2025