

OWOSSO, MICHIGAN

AL-5312 (FAA)

25163

WAAS CH 50209 W11A	APP CRS 109°	Rwy Ldg TDZE Apt Elev	4300 736 737
--	------------------------	-----------------------------	---

RNAV (GPS) RWY 11

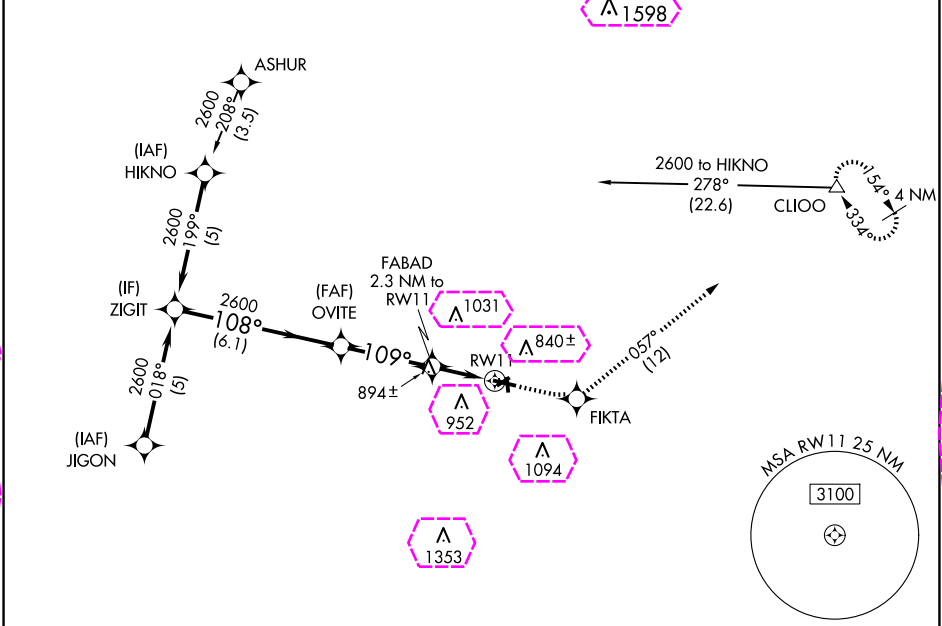
OWOSSO COMMUNITY (RNP)

RNP APCH.

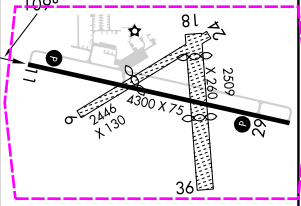
⚠ Circling NA to Rwy 6, 18, 24, and 36. For uncompensated Baro-VNAV systems, LNAV/VNAV NA below -16°C (4°F) or above 54°C (130°F). Rwy 11 helicopter visibility reduction below ¾ SM NA.

MISSED APPROACH: Climb to 3000 direct FIKTA and on track 057° to CLIOO and hold.

AWOS-3 118.025	GREAT LAKES APP CON ★ 128.55 257.9	UNICOM 123.0 (CTAF) 0
--------------------------	--	---------------------------------



ELEV 737		TDZE 736	
VGSI and RNAV glidepath not coincident (VGSI Angle 3.50/TCH 25).		3000 FIKTA	
ZIGIT		CLIOO	
OVITE		tr 057°	
2600		* LNAV only	
2600		RWY 11	
GP 3.00°		36	
TCH 40		36	
6.1 NM		3.4 NM	
3.4 NM		2.3 NM	
CATEGORY	A	B	C
LPV DA	1079-1¼	343 (400-1¼)	NA
LNAV/VNAV DA	1258-2	522 (600-2)	NA
LNAV MDA	1180-1	444 (500-1)	1180-1¼
	483 (500-1)	523 (600-1)	444 (500-1¼)
CIRCLING	1220-1	1260-1	1400-1¼
	483 (500-1)	523 (600-1)	663 (700-1¼)



OWOSSO, MICHIGAN
Amdt 1F 18JUN20

43°00'N-84°08'W

OWOSSO COMMUNITY (RNP)
RNAV (GPS) RWY 11

EC-1, 10 JUL 2025 to 07 AUG 2025

EC-1, 10 JUL 2025 to 07 AUG 2025

OWOSSO, MICHIGAN

AL-5312 (FAA)

25219

WAAS CH 50209 W11A	APP CRS 109°	Rwy Ldg TDZE Apt Elev 4300 736 737
--	------------------------	--

RNAV (GPS) RWY 11

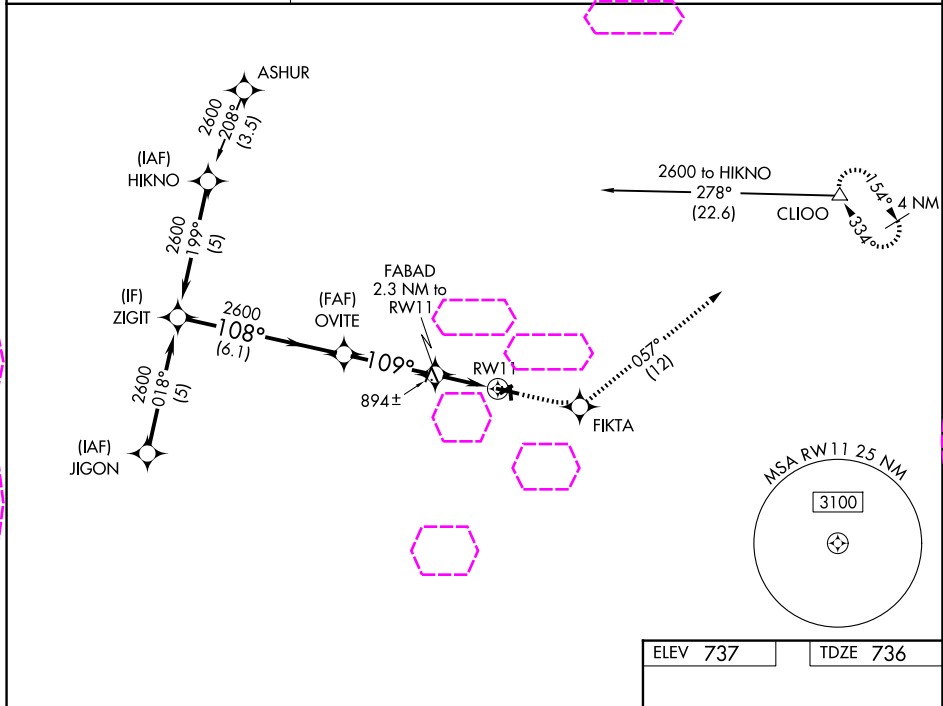
OWOSSO COMMUNITY (RNP)

RNP APCH.

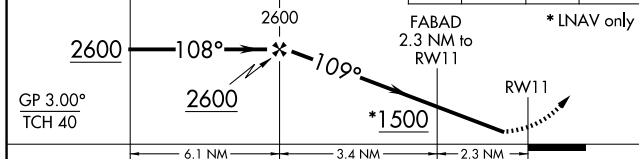
▼ Circling NA to Rwy 6, 18, 24, and 36. For uncompensated Baro-VNAV systems, LNAV/VNAV NA below -16°C (4°F) or above 54°C (130°F). Rwy 11 helicopter visibility reduction below ¾ SM NA.

MISSED APPROACH: Climb to 3000 direct FIKTA and on track 057° to CLIOO and hold.

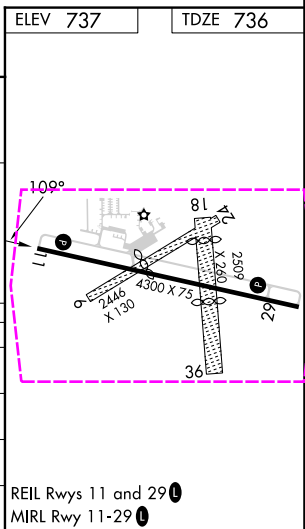
AWOS-3 118.025	GREAT LAKES APP CON ★ 128.55 257.9	UNICOM 123.0 (CTAF) 0
--------------------------	--	---------------------------------



VGSI and RNAV glidepath not coincident (VGSI Angle 3.00/TCH 40)	3000 FIKTA	CLIOO
ZIGIT	OVITE	tr 057°



CATEGORY	A	B	C	D
LPV DA	1079-1¼	343 (400-1¼)		NA
LNAV/VNAV DA	1258-2	522 (600-2)		NA
LNAV MDA	1180-1	444 (500-1)	1180-1¼ 444 (500-1¼)	NA
CIRCLING	1220-1 483 (500-1)	1260-1 523 (600-1)	1400-1¾ 663 (700-1¾)	NA



OWOSSO, MICHIGAN
Amdt 1F 18JUN20

43°00'N-84°08'W

OWOSSO COMMUNITY (RNP) RNAV (GPS) RWY 11