

DEVILS LAKE, NORTH DAKOTA

AL-5305 (FAA)

23222

WAAS CH 93608 W03A	APP CRS 038°	Rwy Idg 4314 TDZE 1450 Apt Elev 1470
----------------------------------------	------------------------	-----------------------------------------------------------------

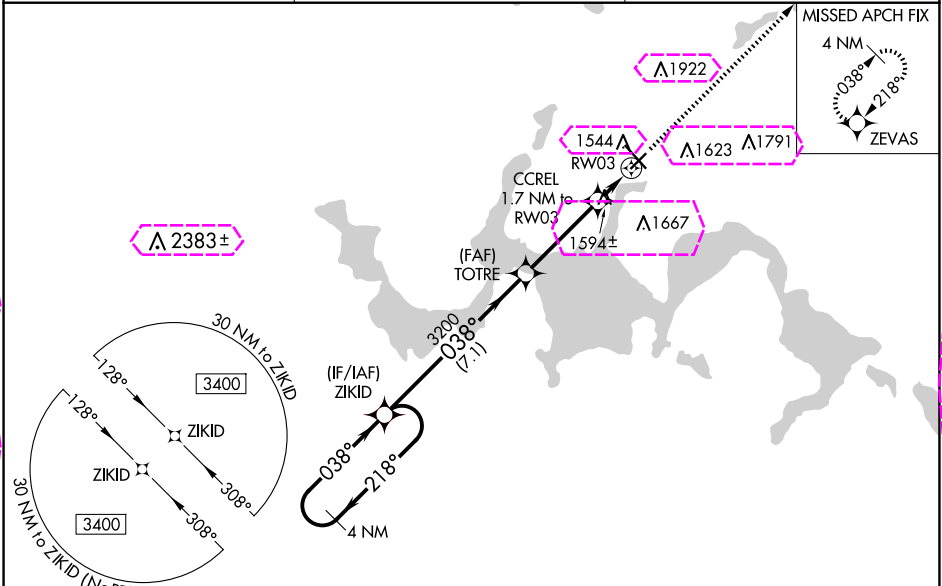
RNAV (GPS) RWY 3

DEVILS LAKE RGNL (DVL)

⚠ For uncompensated Baro-VNAV systems, LNAV/VNAV NA below -17°C (2°F) or above 54°C (130°F). DME/DME RNP-0.3 NA. When local altimeter setting not received, use Cando altimeter setting and increase all DA 63 feet, and all MDA 80 feet, increase LNAV/VNAV all Cats visibility 1/8 mile, LNAV and Circling Cat C and D visibility 1/4 mile. Helicopter visibility reduction below 1/4 SM NA. Baro-VNAV NA when using Cando altimeter setting.

MISSED APPROACH: Climb to 3400 direct ZEVAS and hold.

AWOS-3PT 125.875	MINNEAPOLIS CENTER 124.2 270.3	UNICOM 122.8 (CTAF) 0
----------------------------	------------------------------------------	----------------------------------------



ELEV 1470		D TDZE 1450	
VGSi and RNAV glidepath not coincident (VGSi Angle 3.00/TCH 25).			
4 NM Holding Pattern		ZEVAS	
3400 ← 218° / 038° →		3400 ↑	
GP 3.00° TCH 50		*LNAV only.	
ZIKID		TOTRE	
3200		3200	
7.1 NM		3.6 NM	
CCREL 1.7 NM to RW03		RW03	
*2040		RW03	
CATEGORY	A	B	C
LPV DA	1700-1 250 (300-1)		
LNAV/VNAV DA	1714-1 264 (300-1)		
LNAV MDA	1860-1 410 (400-1)	1860-1 1/8 410 (400-1 1/8)	
CIRCLING	2000-1 530 (600-1)	2240-2 1/4 770 (800-2 1/4)	2240-2 1/2 770 (800-2 1/2)

DEVILS LAKE, NORTH DAKOTA
Amdt 2B 11DEC14

48°07'N-98°55'W

DEVILS LAKE RGNL (DVL)
RNAV (GPS) RWY 3

NC-1, 10 JUL 2025 to 07 AUG 2025

NC-1, 10 JUL 2025 to 07 AUG 2025

DEVILS LAKE, NORTH DAKOTA

AL-5305 (FAA)

25219

WAAS CH 93608 W03A	APP CRS 038°	Rwy Ldg 4314 TDZE 1450 Apt Elev 1470
----------------------------------------	------------------------	-----------------------------------------------------------------

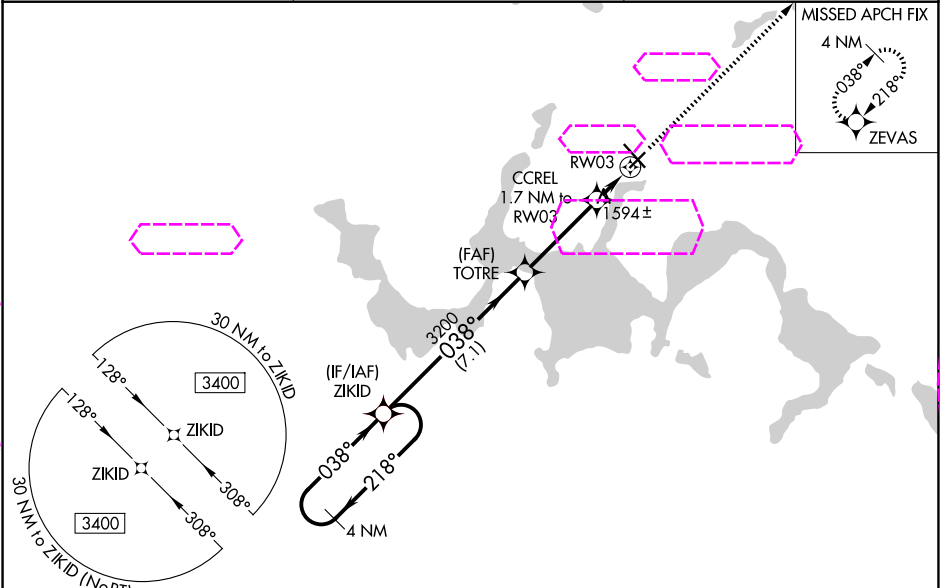
RNAV (GPS) RWY 3

DEVILS LAKE RGNL (DVL)

⚠ For uncompensated Baro-VNAV systems, LNAV/VNAV NA below -17°C (2°F) or above 54°C (130°F). DME/DME RNP-0.3 NA. When local altimeter setting not received, use Cando altimeter setting and increase all DA 63 feet, and all MDA 80 feet, increase LNAV/VNAV all Cats visibility 1/8 mile, LNAV and Circling Cat C and D visibility 1/4 mile. Helicopter visibility reduction below 1/4 SM NA. Baro-VNAV NA when using Cando altimeter setting.

MISSED APPROACH: Climb to 3400 direct ZEVAS and hold.

AWOS-3PT 125.875	MINNEAPOLIS CENTER 124.2 270.3	UNICOM 122.8 (CTAF) 0
----------------------------	------------------------------------------	---------------------------------



ELEV 1470 **D** TDZE 1450

VGSI and RNAV glidepath not coincident (VGSI Angle 3.00/TCH 25).

4 NM Holding Pattern

3400 ← 218° / 038° →

GP 3.00° TCH 50

ZIKID

TOTRE 3200

CCREL 1.7 NM to RWY 03

RWY 03

*2040

*LNAV only.

3400 ZEVAS

6400 X 100

0.4% UP

038°

CATEGORY	A	B	C	D
LPV DA	1700-1 250 (300-1)			
LNAV/VNAV DA	1714-1 264 (300-1)			
LNAV MDA	1860-1 410 (400-1)	1860-1 1/8 410 (400-1 1/8)		
CIRCLING	2000-1 530 (600-1)	2240-2 1/4 770 (800-2 1/4)	2240-2 1/2 770 (800-2 1/2)	

HIREL Rwy 13-31 0

REIL Rwy 3, 13 and 21 0

MIRL Rwy 3-21 0

DEVILS LAKE, NORTH DAKOTA
Amdt 2B 11DEC14

48°07'N-98°55'W

DEVILS LAKE RGNL (DVL)
RNAV (GPS) RWY 3