

DEVILS LAKE, NORTH DAKOTA

AL-5305 (FAA)

23278

WAAS CH 58314 W31A	APP CRS 311°	Rwy Idg TDZE 1450 Apt Elev 1469
--	------------------------	---

RNAV (GPS) RWY 31

DEVILS LAKE RGNL (DVL)

RNP APCH - GPS.

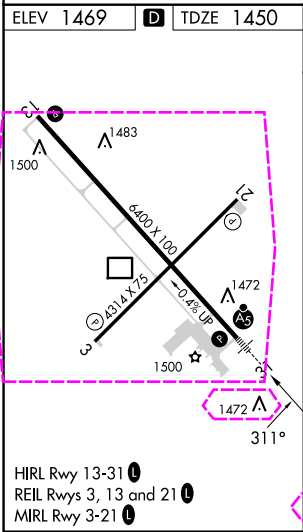
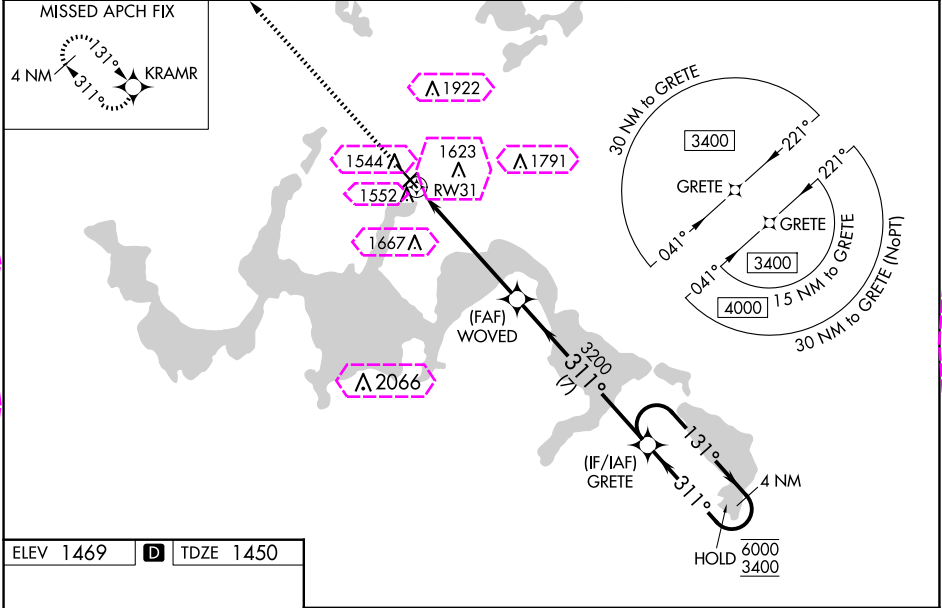
⚠ For uncompensated Baro-VNAV systems, LNAV/VNAV NA below -17°C or above 54°C. Baro-VNAV and VDP NA when using Cando altimeter setting. For inop ALS, increase LNAV/VNAV all Cats visibility to ¾ SM, LNAV Cats C/D visibility to 1 SM. When local altimeter setting not received, use Cando altimeter setting and increase LPV DA 1711 feet, LNAV/VNAV DA to 1782 feet; **increase all MDAs 80 feet** and LNAV visibility Cat C/D ¼ SM, and Circling visibility Cat C/D ¼ SM. For inop ALS when using Cando altimeter setting, increase LPV all Cats visibility to ¾ SM.

MALSRL

⚠

MISSED APPROACH: Climb to 3400 direct KRAMR and hold.

AWOS-3PT 125.875	MINNEAPOLIS CENTER 124.2 270.3	UNICOM 122.8 (CTAF) 0
----------------------------	--	---------------------------------



3400

↑

KRAMR

✴

WOVED

3200

GRETE

4 NM Holding Pattern

131° → 6000

← 311° 3400

1 NM to RW31

1 NM

4.3 NM

7 NM

RW31

311°

3200

GP 3.00°

TCH 44

CATEGORY	A	B	C	D
LPV DA	1650-½		200 (200-½)	
LNAV/VNAV DA	1721-½		271 (300-½)	
LNAV MDA	1820-½	370 (400-½)	1820-⅝	370 (400-⅝)
CIRCLING	2000-1	531 (600-1)	2240-2¼ 771 (800-2¼)	2240-2½ 771 (800-2½)

DEVILS LAKE, NORTH DAKOTA
Amdt 2 10AUG23

48°07'N-98°55'W

DEVILS LAKE RGNL (DVL) RNAV (GPS) RWY 31

NC-1, 10 JUL 2025 to 07 AUG 2025

NC-1, 10 JUL 2025 to 07 AUG 2025

DEVILS LAKE, NORTH DAKOTA

AL-5305 (FAA)

25219

WAAS CH 58314 W31A	APP CRS 311°	Rwy Ldg TDZE 1450 Apt Elev 1469
--	------------------------	---


RNAV (GPS) RWY 31

DEVILS LAKE RGNL (DVL)

RNP APCH - GPS.

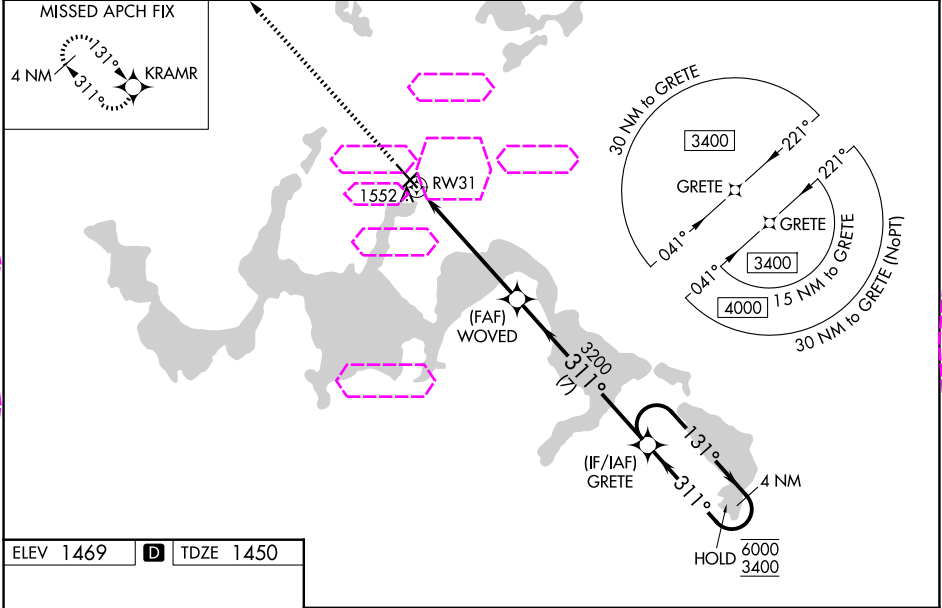
For uncompensated Baro-VNAV systems, LNAV/VNAV NA below -17°C or above 54°C. Baro-VNAV and VDP NA when using Cando altimeter setting. For inop ALS, increase LNAV/VNAV all Cats visibility to ¾ SM, LNAV Cats C/D visibility to 1 SM. When local altimeter setting not received, use Cando altimeter setting and increase LPV DA 1711 feet, LNAV/VNAV DA to 1782 feet; **increase all MDAs 80 feet** and LNAV visibility Cat C/D ¼ SM, and Circling visibility Cat C/D ¼ SM. For inop ALS when using Cando altimeter setting, increase LPV all Cats visibility to ¾ SM.

MALSR

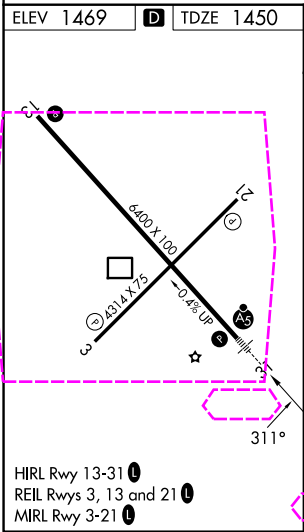


MISSED APPROACH: Climb to 3400 direct KRAMR and hold.

AWOS-3PT 125.875	MINNEAPOLIS CENTER 124.2 270.3	UNICOM 122.8 (CTAF) 0
----------------------------	--	---------------------------------



ELEV 1469 **D** TDZE 1450



HIRL Rwy 13-31
REIL Rwy 3, 13 and 21
MIRL Rwy 3-21

3400

↑

KRAMR

✴

WOVED

3200

GRETE

4 NM Holding Pattern

1 NM to RW31

1 NM

4.3 NM

7 NM

311°

131°

311°

6000

3400

GP 3.00°

TCH 44

RW31

3200

CATEGORY	A	B	C	D
LPV DA	1650-½ 200 (200-½)			
LNAV/VNAV DA	1721-½ 271 (300-½)			
LNAV MDA	1820-½	370 (400-½)	1820-⅝	370 (400-⅝)
CIRCLING	2000-1	531 (600-1)	2240-2¼ 771 (800-2¼)	2240-2½ 771 (800-2½)

DEVILS LAKE, NORTH DAKOTA
Amdt 2 10AUG23

48°07'N-98°55'W

RNAV (GPS) RWY 31

DEVILS LAKE RGNL (DVL)

NC-1, 07 AUG 2025 to 04 SEP 2025

NC-1, 07 AUG 2025 to 04 SEP 2025