

DEVILS LAKE, NORTH DAKOTA

AL-5305 (FAA)

23222

WAAS CH <b>78417</b> <b>W21A</b>	APP CRS <b>218°</b>	Rwy Idg TDZE Apt Elev	<b>4314</b> <b>1449</b> <b>1470</b>
--	------------------------	-----------------------------	---

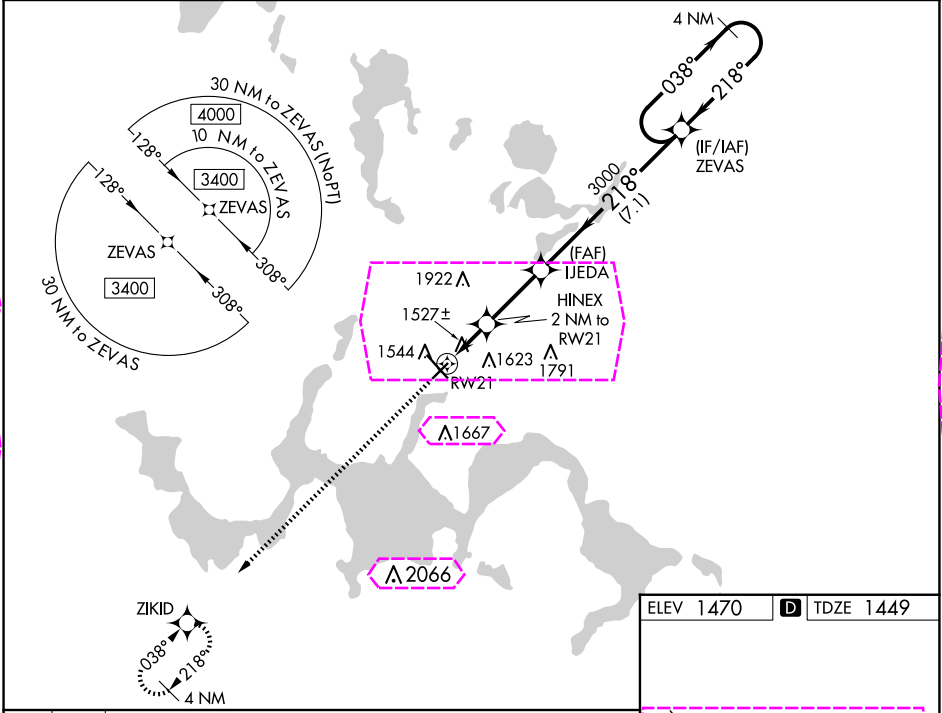
# RNAV (GPS) RWY 21

DEVILS LAKE RGNL (DVL)

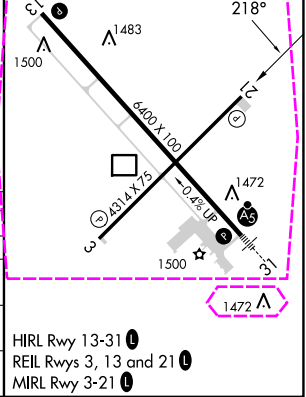
**⚠** For uncompensated Baro-VNAV systems, LNAV/VNAV NA below -17°C (2°F) or above 54°C (130°F). DME/DME RNP-0.3 NA. Helicopter visibility reduction below ¾ SM NA. Baro-VNAV NA when using Cando altimeter setting. VDP NA with Cando altimeter setting. When local altimeter setting not received, use Cando altimeter setting and increase all DA 63 feet, and all MDA 80 feet, increase LNAV and Circling Cats C and D visibility ¼ mile.

MISSED APPROACH: Climb to 3400 direct ZIKID and hold.

AWOS-3PT <b>125.875</b>	MINNEAPOLIS CENTER <b>124.2 270.3</b>	UNICOM <b>122.8 (CTAF) 0</b>
----------------------------	--	---------------------------------



3400	ZIKID	VGSI and RNAV glidepath not coincident (VGSI Angle 3.00/TCH 25).	ZEVAS	4 NM Holding Pattern
*LNAV only.	HINEX 2 NM to RW21	IJEDA 3000	038° → 3400	
	*1.1 NM to RW21	218°	← 218°	
		2120*	3000	
		GP 3.00° TCH 50		
		1.1	0.9	2.7 NM
				7.1 NM
CATEGORY	A	B	C	D
LPV DA		1699-1	250 (300-1)	
LNAV/VNAV DA		1699-1	250 (300-1)	
LNAV MDA		1800-1	351 (400-1)	
<b>CIRCLING</b>	2000-1	530 (600-1)	2240-2¼ 770 (800-2¼)	2240-2½ 770 (800-2½)



DEVILS LAKE, NORTH DAKOTA  
Amdt 1B 05FEB15

48°07'N-98°55'W

DEVILS LAKE RGNL (DVL)  
**RNAV (GPS) RWY 21**

DEVILS LAKE, NORTH DAKOTA

AL-5305 (FAA)

25219

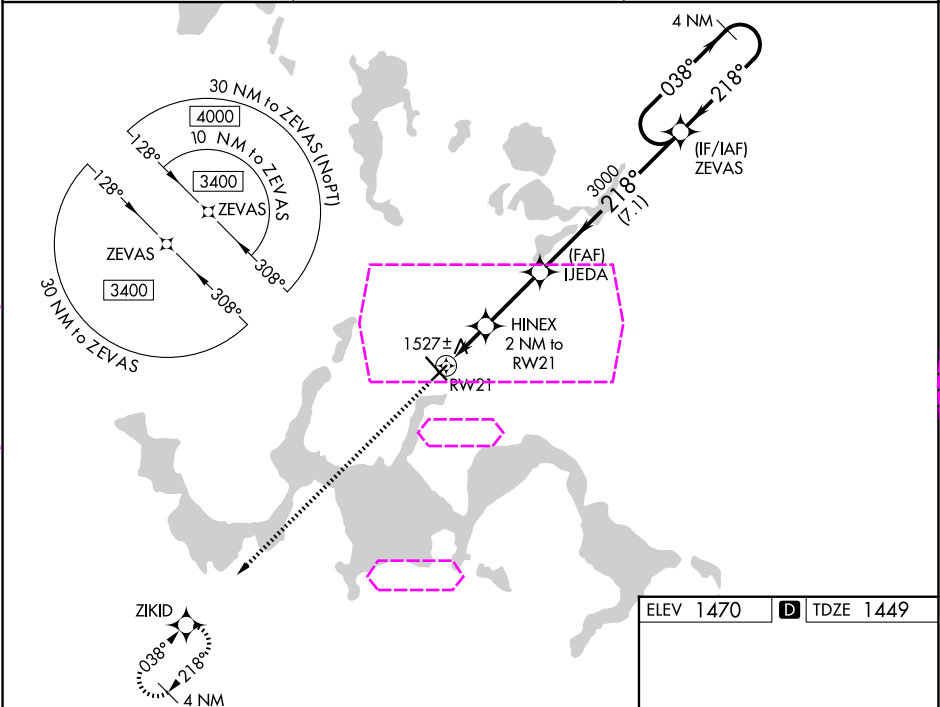
WAAS CH <b>78417</b> <b>W21A</b>	APP CRS <b>218°</b>	Rwy Ldg TDZE Apt Elev	<b>4314</b> <b>1449</b> <b>1470</b>
--	------------------------	-----------------------------	---

**RNAV (GPS) RWY 21**  
DEVILS LAKE RGNL (DVL)

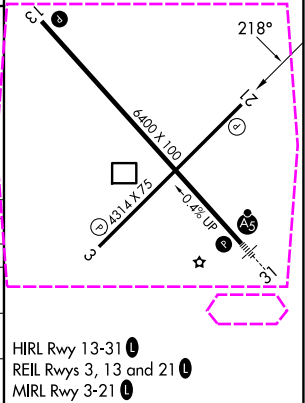
**⚠** For uncompensated Baro-VNAV systems, LNAV/VNAV NA below -17°C (2°F) or above 54°C (130°F). DME/DME RNP-0.3 NA. Helicopter visibility reduction below ¾ SM NA. Baro-VNAV NA when using Cando altimeter setting. VDP NA with Cando altimeter setting. When local altimeter setting not received, use Cando altimeter setting and increase all DA 63 feet, and all MDA 80 feet, increase LNAV and Circling Cats C and D visibility ¼ mile.

MISSED APPROACH: Climb to 3400 direct ZIKID and hold.

AWOS-3PT <b>125.875</b>	MINNEAPOLIS CENTER <b>124.2 270.3</b>	UNICOM <b>122.8 (CTAF) 0</b>
----------------------------	--	---------------------------------



3400	ZIKID	VGSI and RNAV glidepath not coincident (VGSI Angle 3.00/TCH 25).	ZEVAS	4 NM Holding Pattern
*LNAV only.	HINEX 2 NM to RWY 21	IJEDA	3000	038° → 3400
	*1.1 NM to RWY 21		218°	← 218°
			2120*	3000
			1.1	0.9
			2.7 NM	7.1 NM
CATEGORY	A	B	C	D
LPV DA		1699-1	250 (300-1)	
LNAV/VNAV DA		1699-1	250 (300-1)	
LNAV MDA		1800-1	351 (400-1)	
CIRCLING	2000-1	530 (600-1)	2240-2¼ 770 (800-2¼)	2240-2½ 770 (800-2½)



DEVILS LAKE, NORTH DAKOTA  
Amdt 1B 05FEB15

48°07'N-98°55'W

DEVILS LAKE RGNL (DVL)  
**RNAV (GPS) RWY 21**

NC-1, 07 AUG 2025 to 04 SEP 2025

NC-1, 07 AUG 2025 to 04 SEP 2025