

DEVILS LAKE, NORTH DAKOTA

AL-5305 (FAA)

24165

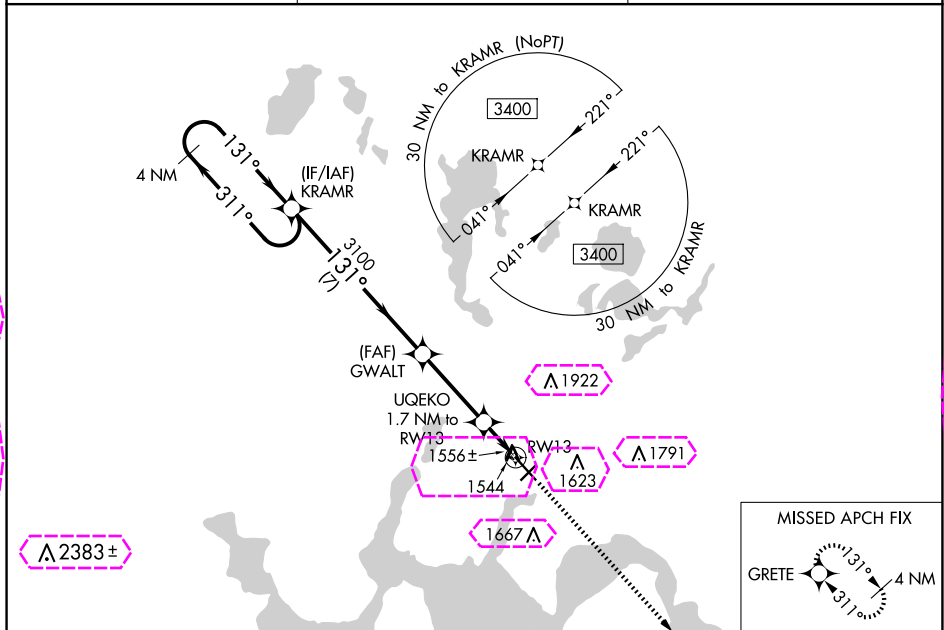
WAAS CH 78314 W13A	APP CRS 131°	Rwy Idg 6400 TDZE 1470 Apt Elev 1470
--	------------------------	---

RNAV (GPS) RWY 13

DEVILS LAKE RGNL (DVL)

<p>⚠ For uncompensated Baro-VNAV systems, LNAV/VNAV NA below -17°C (2°F) or above 54°C (130°F). DME/DME RNP-0.3 NA. Baro-VNAV and VDP NA when using Cando altimeter setting. When local altimeter setting not received, use Cando altimeter setting and increase all DA 63 feet and all MDA 80 feet, increase LPV and LNAV/VNAV all Cats visibility ¼ mile, LNAV and Circling Cats C and D visibility ½ mile.</p>	<p>MISSED APPROACH: Climb to 3400 direct GRETE and hold.</p>
--	--

AWOS-3PT 125.875	MINNEAPOLIS CENTER 124.2 270.3	UNICOM 122.8 (CTAF)
----------------------------	--	-------------------------------



4 NM Holding Pattern		VGSI and RNAV glidepath not coincident (VGSI Angle 3.00/TCH 45).		3400 GRETE	
GP 3.00° TCH 50		*2060		*LNAV only.	
7 NM		3.3 NM		0.8 NM 0.9 NM	
CATEGORY	A	B	C	D	
LPV DA	1720-3/4 250 (300-3/4)				
LNAV/VNAV DA	1791-1 321 (400-1)				
LNAV MDA	1820-1 350 (400-1)				
CIRCLING	2000-1 530 (600-1)	2240-2 770 (800-2 1/4)	2240-2 770 (800-2 1/2)		

DEVILS LAKE, NORTH DAKOTA
Amdt 1B 05FEB15

48°07'N-98°55'W

DEVILS LAKE RGNL (DVL)
RNAV (GPS) RWY 13

NC-1, 10 JUL 2025 to 07 AUG 2025

NC-1, 10 JUL 2025 to 07 AUG 2025

WAAS CH 78314 W13A	APP CRS 131°	Rwy Ldg 6400 TDZE 1470 Apt Elev 1470
--	------------------------	---

RNAV (GPS) RWY 13

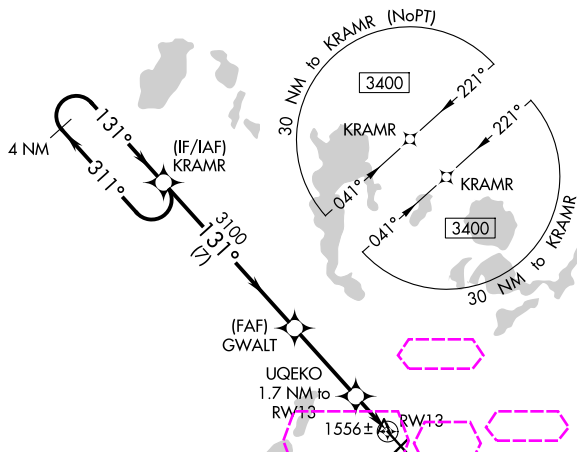
DEVILS LAKE RGNL (DVL)

▼ For uncompensated Baro-VNAV systems, LNAV/VNAV NA below -17°C (2°F) or above 54°C (130°F). DME/DME RNP-0.3 NA. Baro-VNAV and VDP NA when using Cando altimeter setting. When local altimeter setting not received, use Cando altimeter setting and increase all DA 63 feet and all MDA 80 feet, increase LPV and LNAV/VNAV all. Cats visibility ¼ mile, LNAV and Circling Cats C and D visibility ½ mile.

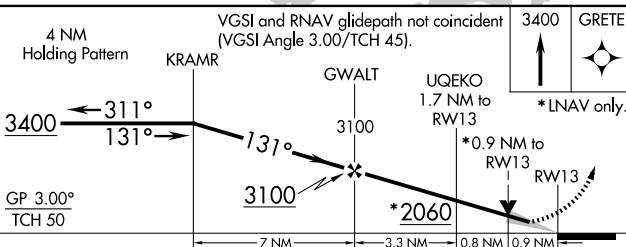
MISSED APPROACH: Climb to 3400 direct GRETE and hold.

AWOS-3PT
125.875

MINNEAPOLIS CENTER
124.2 270.3

UNICOM
122.8 (CTAF) **L**

ELEV 1470	D	TDZE 1470
-----------	----------	-----------



CATEGORY	A	B	C	D
LPV DA	1720-3/4 250 (300-3/4)			
LNAV/ VNAV DA	1791-1 321 (400-1)			
LNAV MDA	1820-1 350 (400-1)			
CIRCLING	2000-1 530 (600-1)	2240-2 1/4 770 (800-2 1/4)	2240-2 1/2 770 (800-2 1/2)	

HIRL Rwy 13-31 **L**
REIL Rwy 3, 13, and 21 **L**
MIRL Rwy 3-21 **L**