

LOC I-VKE	APP CRS	Rwy Idg	6400
<u>108.7</u>	311°	TDZE	1450
		Apt Elev	1469

ILS or LOC RWY 31
DEVILS LAKE RGNL (DVL)

RNP APCH - GPS.

DME or RADAR required.

NA VDP NA when using Cando allimeter setting. When local allimeter setting not received, use Cando allimeter setting and increase S-ILS 31 DA to 1711 feet; increase all MDAs 80 feet and S-LOC 31 visibility Cat C/D ½ SM, and Circling visibility Cat C/D ½ SM. DME from DVL DME. DME use requires simultaneous reception of I-VKE and DVL DME. For inop ALS when using Cando allimeter setting, increase S-ILS 31 all Cats visibility to ¾ SM. For inop ALS, increase S-LOC 31 Cat C/D visibility to 1 ¾ SM.

MALSR

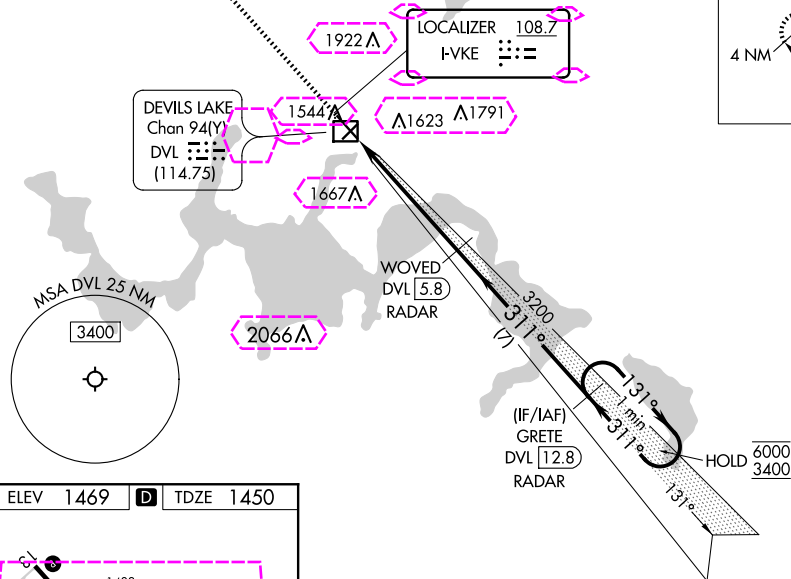
MISSED APPROACH: Climb to 3400 direct KRAMR and hold.

AWOS-3PT
125.875

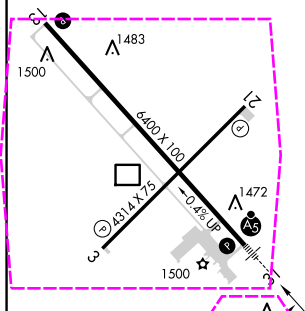
MINNEAPOLIS CENTER
124.2 270.3

UNICOM
122.8 (CTAF) **L**

MISSED APCH FIX





ELEV	1469	D	TDZE	1450
------	------	----------	------	------



HIRL Rwy 13-31 **L**
REIL Rwy 3, 13 and 21 **L**
MIRL Rwy 3-21 **L**

FAF to MAP 5.4 NM

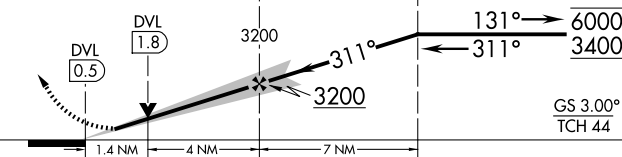
Knots	60	90	120	150	180
Min:Sec	5:24	3:36	2:42	2:10	1:48


3400	KRAMR
	

WOVED
DVL 5.8
RADAR

GRETE
DVL 12.8
RADAR

One Minute Holding Pattern



CATEGORY	A	B	C	D
S-ILS 31	1650-½		200 (200-½)	
S-LOC 31	1920-½ 470 (500-½)		1920-1 470 (500-1)	
 CIRCLING	2000-1 531 (600-1)		2240-2¼ 771 (800-2¼)	2240-2½ 771 (800-2½)

DEVILS LAKE, NORTH DAKOTA

Amdt 4 10AUG23

48°07'N-98°55'W

DEVILS LAKE RGNL (DVL)
ILS or LOC RWY 31

NC-1, 10 JUL 2025 to 07 AUG 2025

NC-1, 10 JUL 2025 to 07 AUG 2025


DEVILS LAKE, NORTH DAKOTA

AL-5305 (FAA)

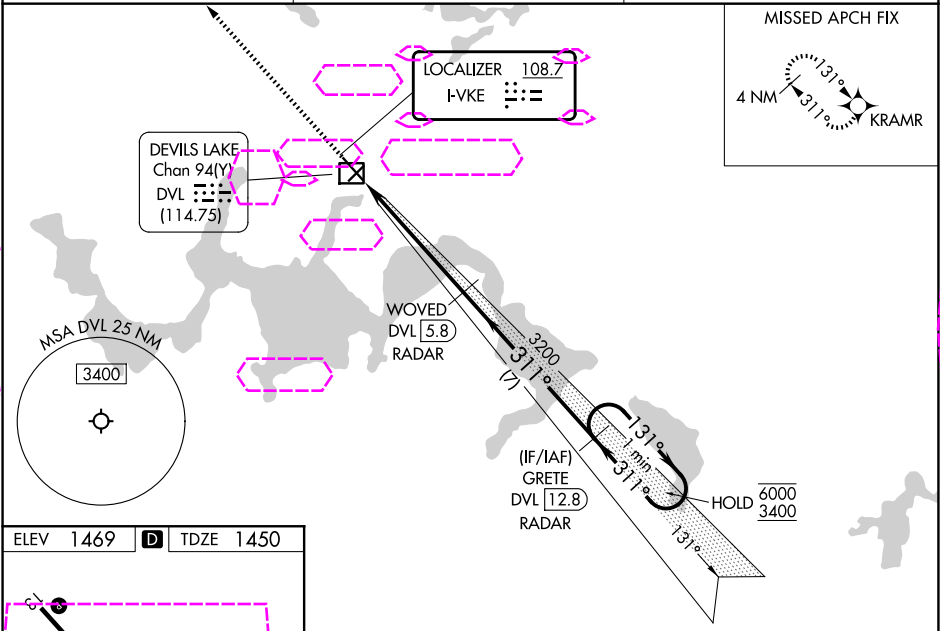
25219

LOC I-VKE 108.7	APP CRS 311°	Rwy Ldg TDZE Apt Elev	6400 1450 1469
---------------------------	------------------------	-----------------------------	---

ILS or LOC RWY 31
DEVILS LAKE RGNL (DVL)

RNP APCH - GPS.		<div>MALSR</div> <div></div>	MISSED APPROACH: Climb to 3400 direct KRAMR and hold.
DME or RADAR required.			
<div><div><div><div><div></div><div></div></div><div><div></div><div></div></div></div><div><div></div><div></div></div><div>NA</div></div></div>	<div>VDP NA when using Cando altimeter setting. When local altimeter setting not received, use Cando altimeter setting and increase S-ILS 31 DA to 1711 feet; increase all MDAs 80 feet and S-LOC 31 visibility Cat C/D ½ SM, and Circling visibility Cat C/D ¼ SM. DME from DVL DME. DME use requires simultaneous reception of I-VKE and DVL DME. For inop ALS when using Cando altimeter setting, increase S-ILS 31 all Cats visibility to ¾ SM. For inop ALS, increase S-LOC 31 Cat C/D visibility to 1 ¾ SM.</div>		

AWOS-3PT 125.875	MINNEAPOLIS CENTER 124.2 270.3	UNICOM 122.8 (CTAF) 0
----------------------------	--	---------------------------------



ELEV 1469	D	TDZE 1450
HIRL Rwy 13-31 0 REIL Rwy 3, 13 and 21 0 MRL Rwy 3-21 0		
FAF to MAP 5.4 NM		
Knots	60	90 120 150 180
Min:Sec	5:24	3:36 2:42 2:10 1:48

3400 ↑	KRAMR ✦				
		WOVED DVL 5.8 RADAR	GRETE DVL 12.8 RADAR	One Minute Holding Pattern	
DVL 1.8		3200	311°	131° → 6000	← 311° 3400
DVL 0.5		3200	GS 3.00° TCH 44		
CATEGORY	A	B	C	D	
S-ILS 31	1650-½ 200 (200-½)				
S-LOC 31	1920-½ 470 (500-½)		1920-1 470 (500-1)		
CIRCLING	2000-1 531 (600-1)		2240-2¼ 771 (800-2¼)	2240-2½ 771 (800-2½)	

DEVILS LAKE, NORTH DAKOTA
Amdt 4 10AUG23

48°07'N-98°55'W

DEVILS LAKE RGNL (DVL)
ILS or LOC RWY 31