

SHELBYVILLE, TENNESSEE

AL-5299 (FAA)

23054

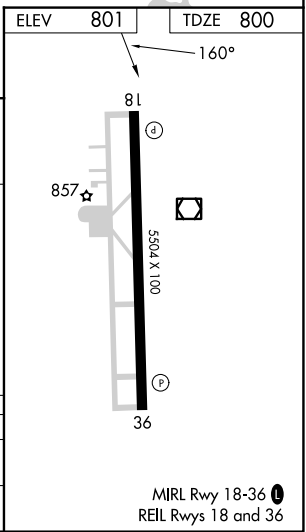
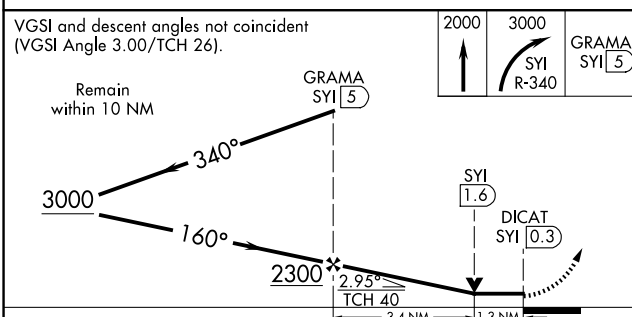
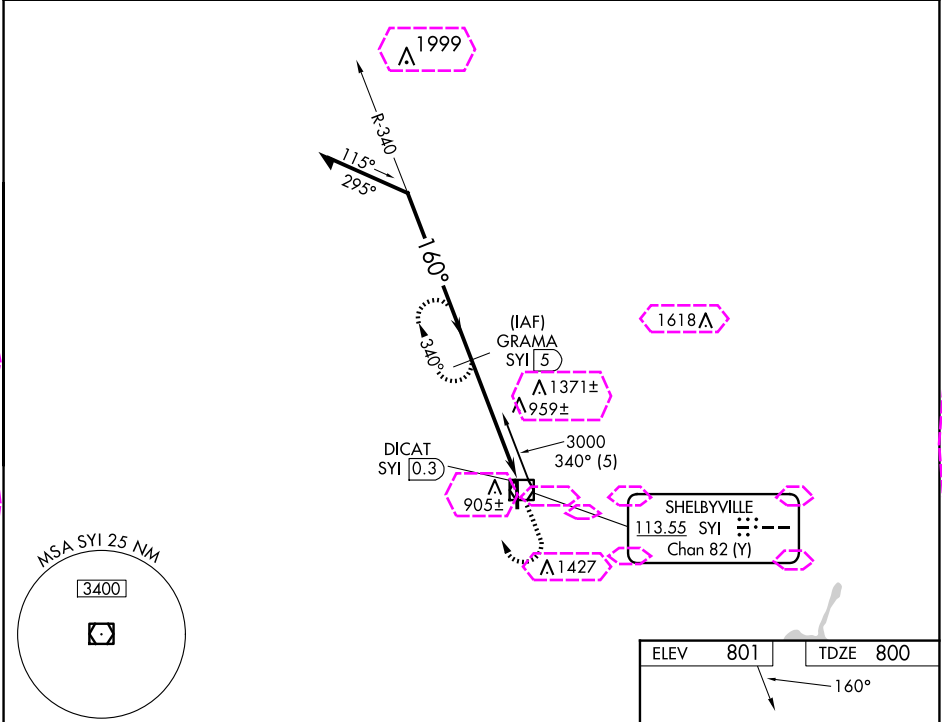
VOR/DME SYI	APP CRS	Rwy Idg
113.55	160°	5504
Chan 82 (Y)		TDZE 800
		Apt Elev 801

VOR/DME RWY 18
BOMAR FLD/SHELBYVILLE MUNI (SYI)

NA When local altimeter setting not received, use Tullahoma altimeter setting and increase all MDA 80 feet, and increase S-18 Cat C and D visibility 1/8 SM.
VDP NA when using Nashville Intl altimeter setting.

MISSED APPROACH: Climb to 2000 then climbing right turn to 3000 via SYI R-340 to GRAMA/5 DME and hold.

AWOS-3 119.275	MEMPHIS CENTER 128.15 323.125	UNICOM 122.8 (CTAF) 0
-------------------	----------------------------------	--------------------------



CATEGORY	A	B	C	D
S-18	1220-1	420 (500-1)	1220-1 1/4	420 (500-1 1/4)
CIRCLING	1260-1 459 (500-1)	1420-1 619 (700-1)	1780-3	979 (1000-3)

SHELBYVILLE, TENNESSEE

Amtd 5A 18JUN20

35°34'N-86°27'W

BOMAR FLD/SHELBYVILLE MUNI (SYI)

VOR/DME RWY 18

VOR/DME RWY 18

SE-1, 07 AUG 2025 to 04 SEP 2025