

35°34'N-86°27'W

SHELBYVILLE, TENNESSEE

AL-5299 (FAA)

25219

VOR/DME SYI	APP CRS	Rwy Ldg
113.55	152°	5504
Chan 82 (Y)		TDZE 800
		Apt Elev 801

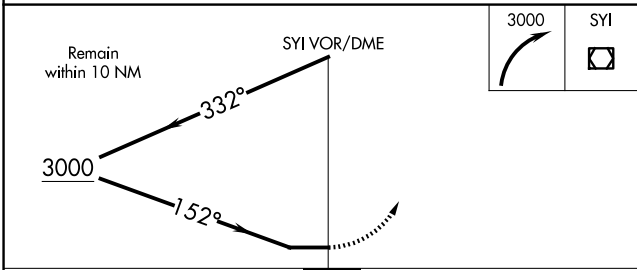
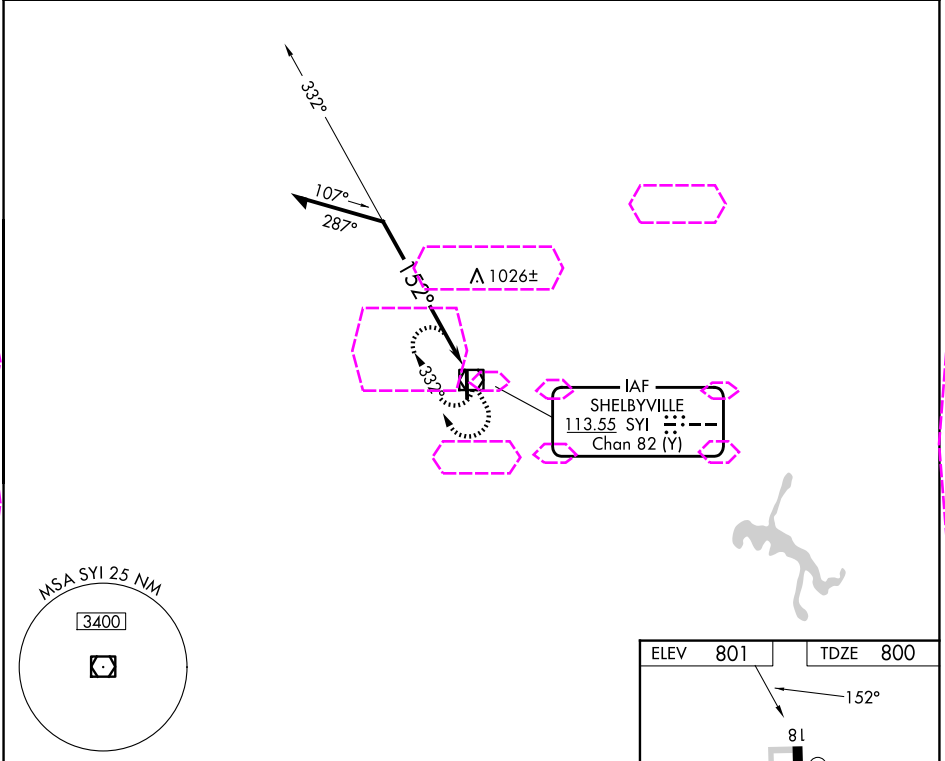
VOR RWY 18

BOMAR FLD/SHELBYVILLE MUNI (SYI)

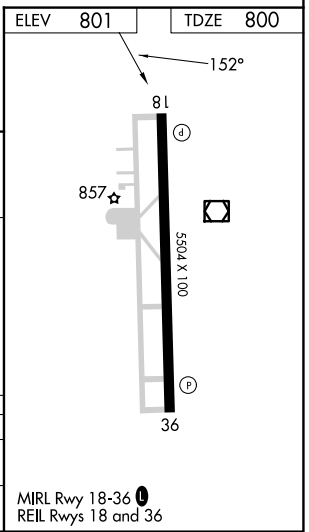
⚠ When local altimeter setting not received, use Tullahoma altimeter setting and increase all MDAs 80 feet and S-18 visibility Cat B/C/D ½ SM, and Circling visibility Cat B ¼ SM.

MISSED APPROACH: Climbing right turn to 3000 in SYI VOR/DME holding pattern.

AWOS-3 119,275	NASHVILLE APP CON 118.4 360.7	UNICOM 122.8 (CTAF) 0
-------------------	----------------------------------	--------------------------



CATEGORY	A	B	C	D
S-18	1500-1	700 (700-1)	1500-2	700 (700-2)
CIRCLING	1500-1	699 (700-1)	1780-3	979 (1000-3)



SHELBYVILLE, TENNESSEE

Amdt 5D 29DEC22

35°34'N-86°27'W

BOMAR FLD/SHELBYVILLE MUNI (SYI)

VOR RWY 18