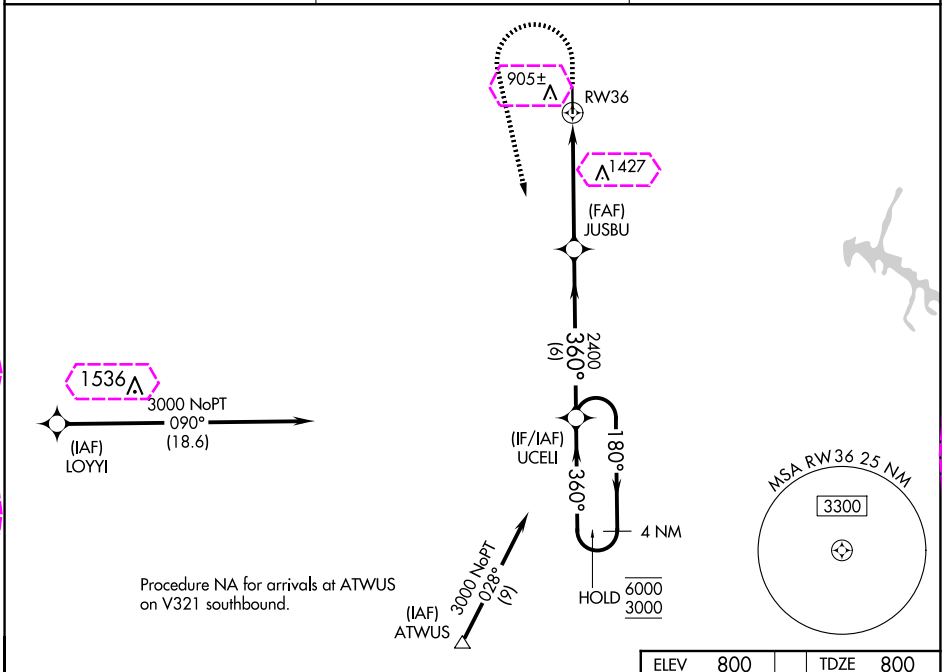


RNAV (GPS) Z RWY 36  
BOMAR FLD/SHELBYVILLE MUNI (SYI)

**T**  
**A** For uncompensated Baro-VNAV systems, LNAV/VNAV NA below -16°C or above 54°C.

**MISSED APPROACH:** Climb to 1800 then climbing left turn to 3000 direct UCELL and hold.

AWOS-3 119.275	MEMPHIS CENTER 128.15 323.125	UNICOM 122.8 (CTAF) 0
-------------------	----------------------------------	--------------------------



ELEV	800
------	-----

TDZE	800
------	-----

81

④

857 ☆

⊞

5504 X 100

Ⓟ

36

↑

360°

MIRL Rwy 18-36  
REIL Rws 18 and 36

SHELBYVILLE, TENNESSEE

AL-5299 (FAA)

25219

WAAS CH <b>97607</b> <b>W36A</b>	APP CRS <b>360°</b>	Rwy Ldg TDZE Apt Elev	<b>5504</b> <b>800</b> <b>800</b>
--	------------------------	-----------------------------	---

# RNAV (GPS) Z RWY 36

BOMAR FLD/SHELBYVILLE MUNI (SYI)

RNP APCH - GPS.

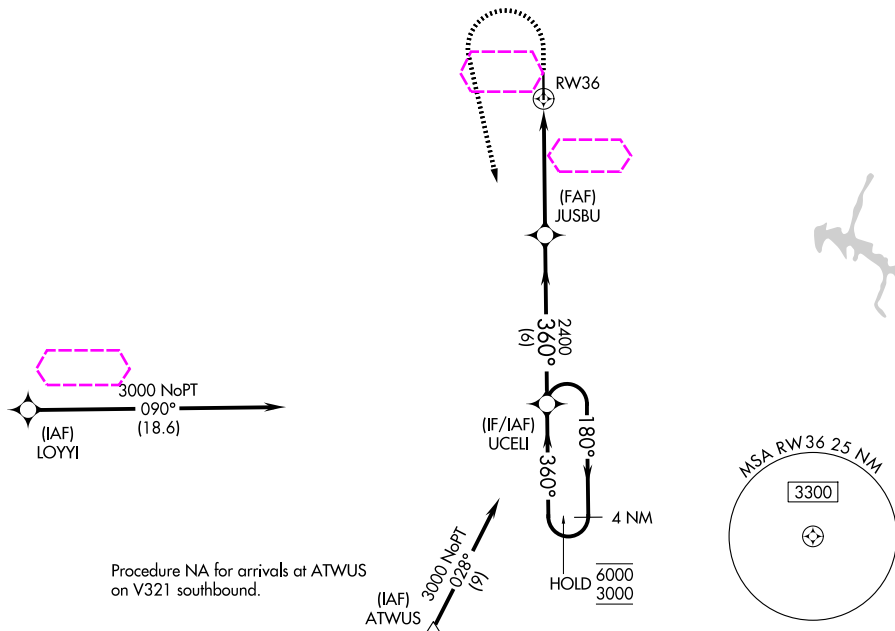
For uncompensated Baro-VNAV systems, LNAV/VNAV NA below -16°C or above 54°C.

MISSED APPROACH: Climb to 1800 then climbing left turn to 3000 direct UCELL and hold.

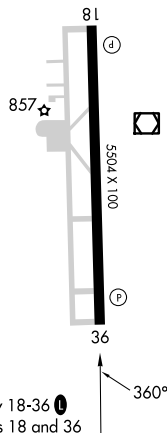
AWOS-3  
**119.275**

NASHVILLE APP CON  
**118.4 / 360.7**

UNICOM  
**122.8 (CTAF) 0**



		ELEV 800		TDZE 800	
4 NM Holding Pattern		VGSi and RNAV glidepath not coincident (VGSi Angle 3.00/TCH 30).			
6000 3000		1800 3000 UCELL			
GP 3.00° TCH 51		JUSBU 2400			
180° 360°		1.5 NM to RW36			
360°		RW36			
2400		6 NM 3.4 NM 1.5 NM			
CATEGORY		A	B	C	D
LPV DA		1000-3/4		200 (200-3/4)	
LNAV/VNAV DA		1211-1 1/8		411 (500-1 1/8)	
LNAV MDA		1300-1	500 (500-1)	1300-1 3/8	500 (500-1 3/8)
CIRCLING		1300-1 500 (500-1)	1360-1 560 (600-1)	1780-3	980 (1000-3)



SHELBYVILLE, TENNESSEE

Amdt 1 17APR25

35°34'N-86°27'W

# BOMAR FLD/SHELBYVILLE MUNI (SYI)

## RNAV (GPS) Z RWY 36