

SHELBYVILLE, TENNESSEE

AL-5299 (FAA)

25107

APP CRS	Rwy Idg	5504
015°	TDZE	800
	Apt Elev	800

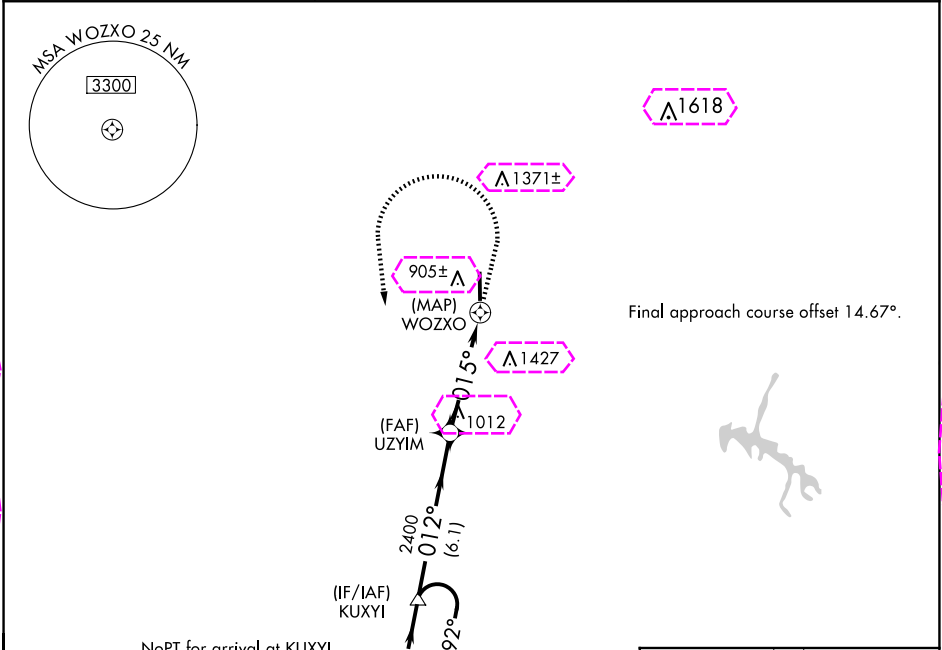
RNAV (GPS) Y RWY 36

BOMAR FLD/SHELBYVILLE MUNI (SYI)

RNP APCH - GPS.

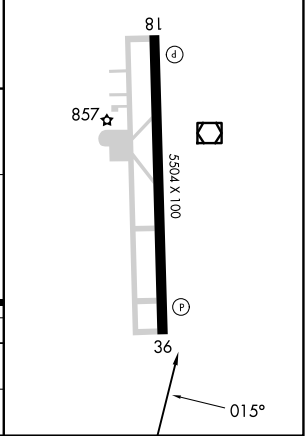
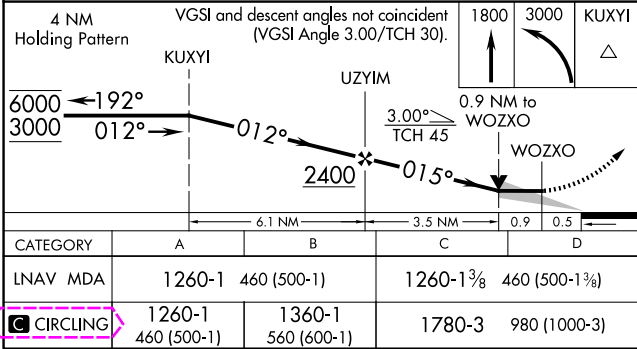
MISSED APPROACH: Climb to 1800 then climbing left turn to 3000 direct KUXYI and hold.

AWOS-3 119.275	MEMPHIS CENTER 128.15 323.125	UNICOM 122.8 (CTAF) 0
-------------------	----------------------------------	--------------------------



NoPT for arrival at KUXYI via V321 northbound.

ELEV 800	TDZE 800
MIRL Rwy 18-36 0	
REIL Rws 18 and 36	



SHELBYVILLE, TENNESSEE
Amdt 1 17APR25

35°34'N-86°27'W

BOMAR FLD/SHELBYVILLE MUNI (SYI)

RNAV (GPS) Y RWY 36

SHELBYVILLE, TENNESSEE

AL-5299 (FAA)

25219

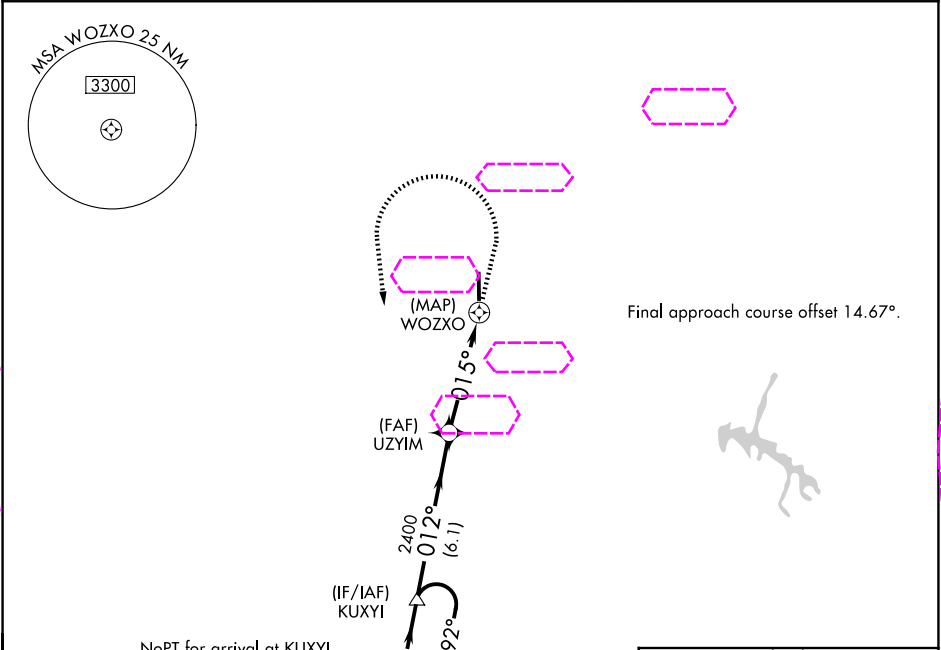
APP CRS	Rwy Ldg	5504
015°	TDZE	800
	Apt Elev	800

RNAV (GPS) Y RWY 36

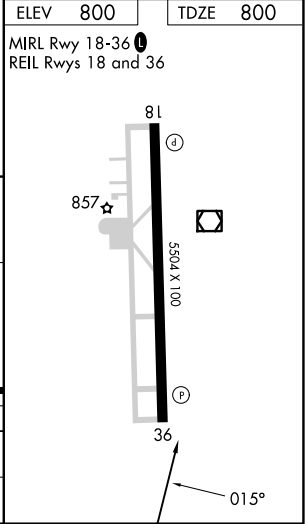
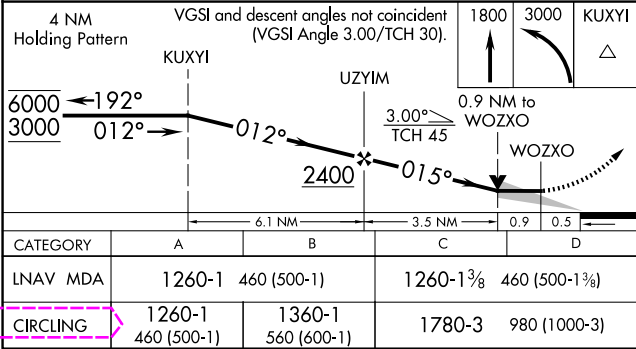
BOMAR FLD/SHELBYVILLE MUNI (SYI)

RNP APCH - GPS.	MISSED APPROACH: Climb to 1800 then climbing left turn to 3000 direct KUXYI and hold.
-----------------	---

AWOS-3 119.275	NASHVILLE APP CON 118.4 360.7	UNICOM 122.8 (CTAF) 0
-------------------	----------------------------------	--------------------------



Final approach course offset 14.67°.



SHELBYVILLE, TENNESSEE
Amdt 1 17APR25

35°34'N-86°27'W

BOMAR FLD/SHELBYVILLE MUNI (SYI)

RNAV (GPS) Y RWY 36

SE-1, 07 AUG 2025 to 04 SEP 2025

SE-1, 07 AUG 2025 to 04 SEP 2025