

SHELBYVILLE, TENNESSEE

AL-5299 (FAA)

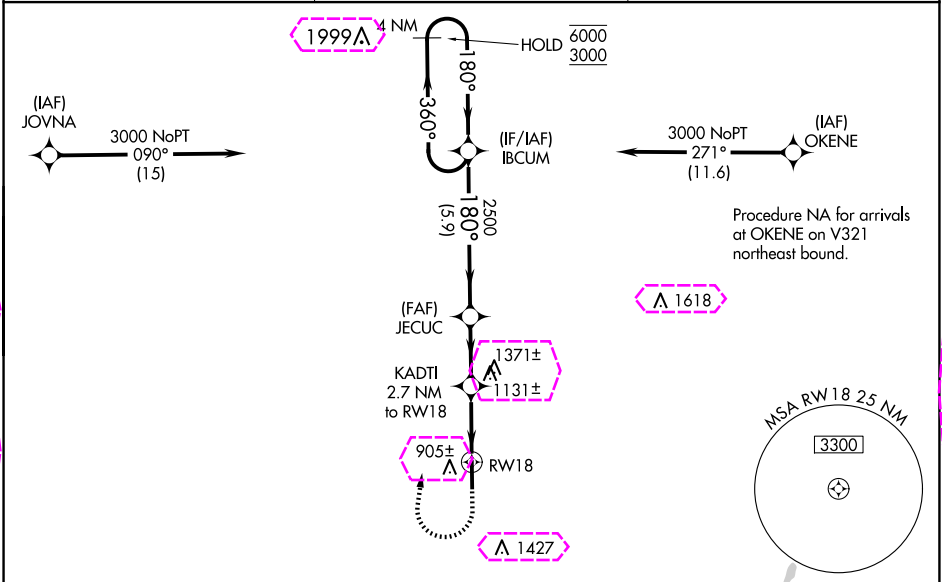
25107

WAAS CH <b>50407</b> <b>W18A</b>	APP CRS <b>180°</b>	Rwy Idg TDZE <b>799</b> Apt Elev <b>800</b>
--	------------------------	---

# RNAV (GPS) RWY 18

BOMAR FLD/SHELBYVILLE MUNI (SYI)

RNP APCH - GPS.		MISSED APPROACH: Climb to 1400 then climbing right turn to 3000 direct IBCUM and hold.
AWOS-3 <b>119.275</b>	MEMPHIS CENTER <b>128.15 323.125</b>	UNICOM <b>122.8 (CTAF) 0</b>



4 NM Holding Pattern		VGSI and RNAV glidepath not coincident (VGSI Angle 3.00/TCH 26).		1400	3000	IBCUM
6000 3000		JECUC		KADTI 2.7 NM to RW18		
GP 3.00° TCH 45		2500		1.5 NM to RW18		
5.9 NM		2.5 NM		1.2 NM		
1.5 NM		1.5 NM		RW18		
CATEGORY	A	B	C	D		
LPV DA	999-3/4		200 (200-3/4)			
LNAB/VNAV DA	1184-1 1/8		385 (400-1 1/8)			
LNAB MDA	1300-1	501 (500-1)	1300-1 3/8	501 (500-1 3/8)		
<b>CIRCLING</b>	1300-1 500 (500-1)	1360-1 560 (600-1)	1780-3	980 (1000-3)		

SHELBYVILLE, TENNESSEE  
Amdt 1 17APR25

35°34'N-86°27'W

BOMAR FLD/SHELBYVILLE MUNI (SYI)  
RNAV (GPS) RWY 18

MIRL Rwy 18-36  
REIL Rwy 18 and 36

SHELBYVILLE, TENNESSEE

AL-5299 (FAA)

25219

WAAS CH <b>50407</b> <b>W18A</b>	APP CRS <b>180°</b>	Rwy Ldg TDZE <b>799</b> Apt Elev <b>800</b>	<b>5504</b>
--	------------------------	---	-------------

# RNAV (GPS) RWY 18

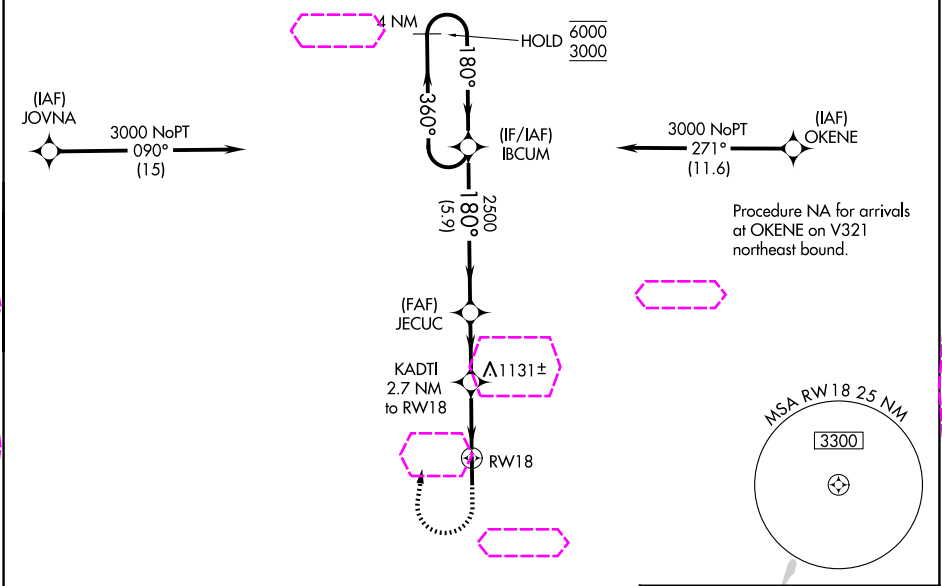
BOMAR FLD/SHELBYVILLE MUNI (SYI)

RNP APCH - GPS.

For uncompensated Baro-VNAV systems, LNAV/VNAV NA below -16°C or above 54°C.

MISSED APPROACH: Climb to 1400 then climbing right turn to 3000 direct IBCUM and hold.

AWOS-3 <b>119.275</b>	NASHVILLE APP CON <b>118.4 360.7</b>	UNICOM <b>122.8 (CTAF) 0</b>
--------------------------	---	---------------------------------



4 NM Holding Pattern

VGSI and RNAV glidepath not coincident (VGSI Angle 3.00/TCH 26).

CATEGORY	A	B	C	D
LPV DA	999-3/4		200 (200-3/4)	
LNAV/VNAV DA	1184-1 1/8		385 (400-1 1/8)	
LNAV MDA	1300-1	501 (500-1)	1300-1 3/8	501 (500-1 3/8)
CIRCLING	1300-1 500 (500-1)	1360-1 560 (600-1)	1780-3	980 (1000-3)

ELEV 800 TDZE 799

MIRL Rwy 18-36 0  
REIL Rwy 18 and 36

SE-1, 07 AUG 2025 to 04 SEP 2025

SE-1, 07 AUG 2025 to 04 SEP 2025

SHELBYVILLE, TENNESSEE

Amdt 1 17APR25

35°34'N-86°27'W

BOMAR FLD/SHELBYVILLE MUNI (SYI)

# RNAV (GPS) RWY 18