

KANKAKEE, ILLINOIS

AL-5278 (FAA)

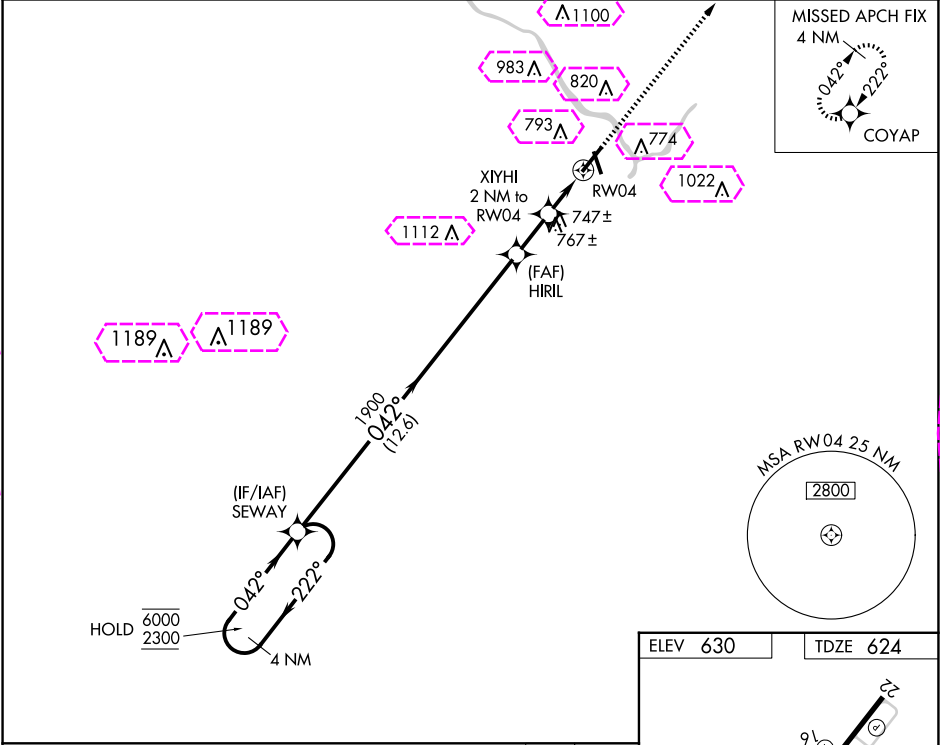
24361

WAAS CH 42799 W04A	APP CRS 042°	Rwy Idg 5981 TDZE 624 Apt Elev 630
--	------------------------	---

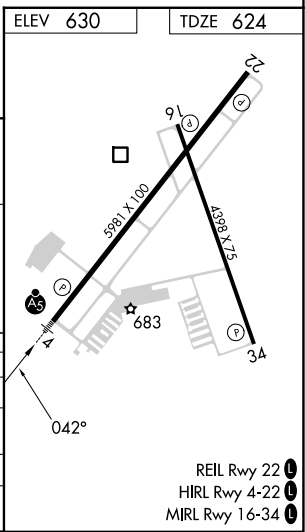
RNAV (GPS) RWY 4
GREATER KANKAKEE (IKK)

RNP APCH - GPS.	MALSR 	MISSED APPROACH: Climb to 2300 direct COYAP and hold.
-----------------	-----------	---

AWOS-3 128.475	CHICAGO CENTER 132.5 284.7	UNICOM 123.0 (CTAF) 0
--------------------------	--------------------------------------	---------------------------------



4 NM Holding Pattern		SEWAY		HIRIL 1900		XIYHI 2 NM to RW04		1 NM to RW04		RW04		2300 ↑ COYAP ✦	
6000 ← 222° 2300 → 042°				042°		1900		1300					
GP 3.00° TCH 51													
		12.6 NM		1.9 NM		1 NM		1 NM					
CATEGORY		A		B		C		D					
LPV DA		824-½		200 (200-½)									
LNAV/ VNAV DA		1010-⅝		386 (400-⅝)									
LNAV MDA		1000-½		376 (400-½)		1000-⅝		376 (400-⅝)					
CIRCLING		1080-1		1100-1		1140-1½		1340-2¼					
		450 (500-1)		470 (500-1)		510 (600-½)		710 (800-2¼)					



KANKAKEE, ILLINOIS

Amdt 3 26DEC24

41°04'N-87°51'W

GREATER KANKAKEE (IKK)
RNAV (GPS) RWY 4

KANKAKEE, ILLINOIS

AL-5278 (FAA)

25219

WAAS CH 42799 W04A	APP CRS 042°	Rwy Ldg TDZE 624 Apt Elev 630
--	------------------------	---

RNAV (GPS) RWY 4

GREATER KANKAKEE (IKK)

RNP APCH - GPS.

▼

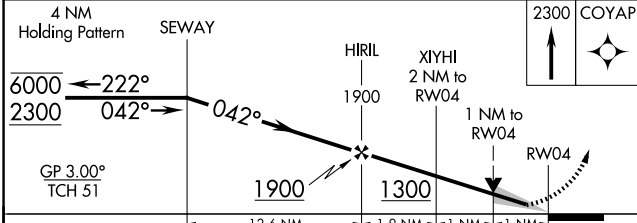
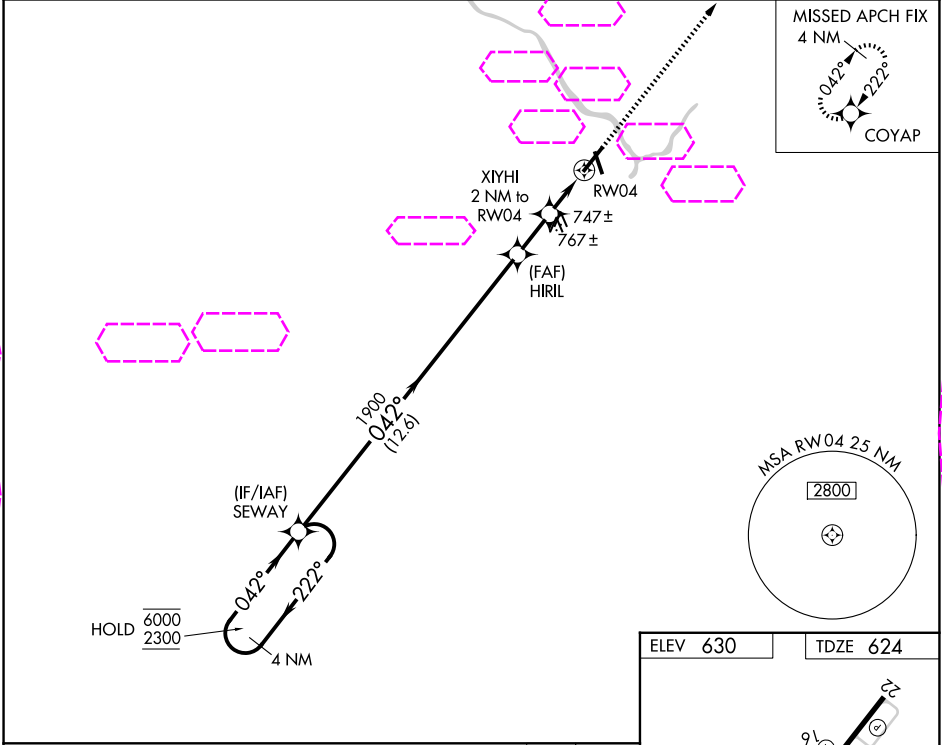
▲

Circling Rwy 16, 34 NA at night. For uncompensated Baro-VNAV systems, LNAV/VNAV NA below -16°C or above 54°C. For inop ALS, increase LNAV Cats C/D to 1 SM.

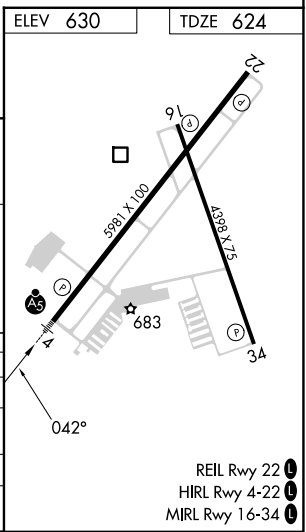
MALSR

MISSED APPROACH: Climb to 2300 direct COYAP and hold.

AWOS-3 128.475	CHICAGO CENTER 132.5 284.7	UNICOM 123.0 (CTAF) 0
--------------------------	--------------------------------------	---------------------------------



CATEGORY	A	B	C	D
LPV DA	824-1/2	200 (200-1/2)		
LNAV/VNAV DA	1010-5/8	386 (400-5/8)		
LNAV MDA	1000-1/2	376 (400-1/2)	1000-5/8	376 (400-5/8)
CIRCLING	1080-1	1100-1	1140-1 1/2	1340-2 1/4
	450 (500-1)	470 (500-1)	510 (600-1 1/2)	710 (800-2 1/4)



KANKAKEE, ILLINOIS
Amdt 3 26DEC24

41°04'N-87°51'W

GREATER KANKAKEE (IKK)
RNAV (GPS) RWY 4

EC-3, 07 AUG 2025 to 04 SEP 2025

EC-3, 07 AUG 2025 to 04 SEP 2025

REIL Rwy 22 0
HIRL Rwy 4-22 0
MIRL Rwy 16-34 0