

KANKAKEE, ILLINOIS

AL-5278 (FAA)

24361

WAAS CH <b>72730</b> <b>W22A</b>	APP CRS <b>222°</b>	Rwy Idg TDZE <b>630</b> Apt Elev <b>630</b>
--	------------------------	---

# RNAV (GPS) RWY 22

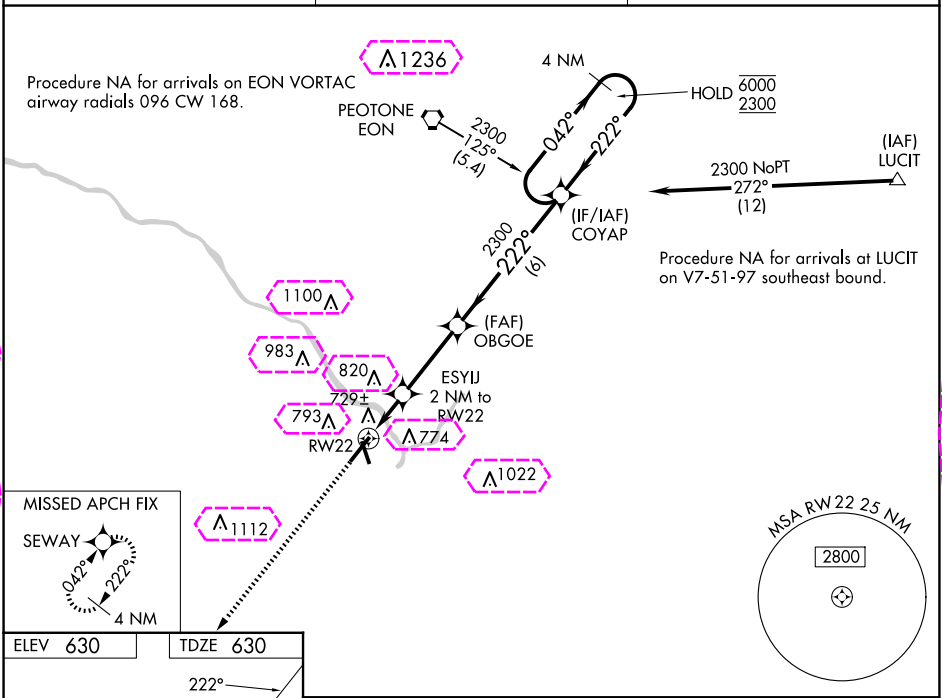
GREATER KANKAKEE (IKK)

RNP APCH.

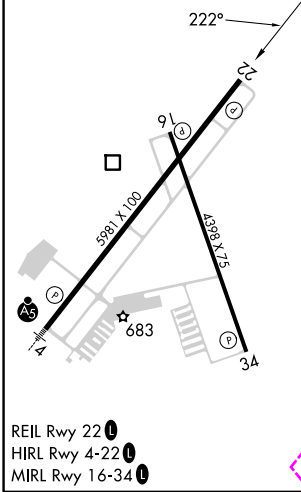
**⚠** Circling Rwy 16, 34 NA at night. Rwy 22 helicopter visibility reduction below ¾ SM NA.  
**⚠** For uncompensated Baro-VNAV systems, LNAV/VNAV NA below -16°C or above 54°C.

MISSED APPROACH:  
Climb to 2300 direct SEWAY and hold.

AWOS-3 <b>128.475</b>	CHICAGO CENTER <b>132.5 284.7</b>	UNICOM <b>123.0 (CTAF) 0</b>
--------------------------	--------------------------------------	---------------------------------



ELEV 630	TDZE 630
----------	----------



2300	SEWAY	OBGOE	COYAP	4 NM Holding Pattern
*LNAV only	ESYUJ 2 NM to RW22	2300	222°	042° 6000
	*1 NM to RW22	1300*	222°	2300
	1 NM	1 NM	3.1 NM	6 NM
CATEGORY	A	B	C	D
LPV DA	880-7/8	250 (300-7/8)		
LNAV/VNAV DA	910-1	280 (300-1)		
LNAV MDA	980-1	350 (400-1)		
<b>CIRCLING</b>	1080-1 450 (500-1)	1100-1 470 (500-1)	1140-1½ 510 (600-1½)	1340-2¼ 710 (800-2¼)

KANKAKEE, ILLINOIS  
Amdt 1B 10SEP20

41°04'N-87°51'W

# GREATER KANKAKEE (IKK)

## RNAV (GPS) RWY 22

EC-3, 10 JUL 2025 to 07 AUG 2025

EC-3, 10 JUL 2025 to 07 AUG 2025

KANKAKEE, ILLINOIS

AL-5278 (FAA)

25219

WAAS CH <b>72730</b> <b>W22A</b>	APP CRS <b>222°</b>	Rwy Ldg TDZE <b>630</b> Apt Elev <b>630</b>
--	------------------------	---

# RNAV (GPS) RWY 22

GREATER KANKAKEE (IKK)

RNP APCH.

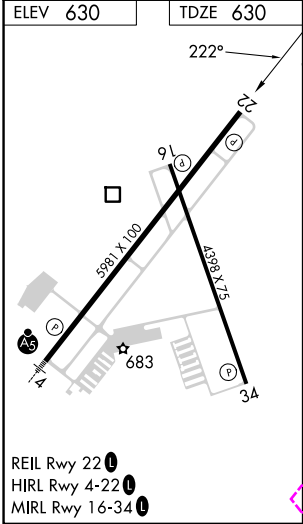
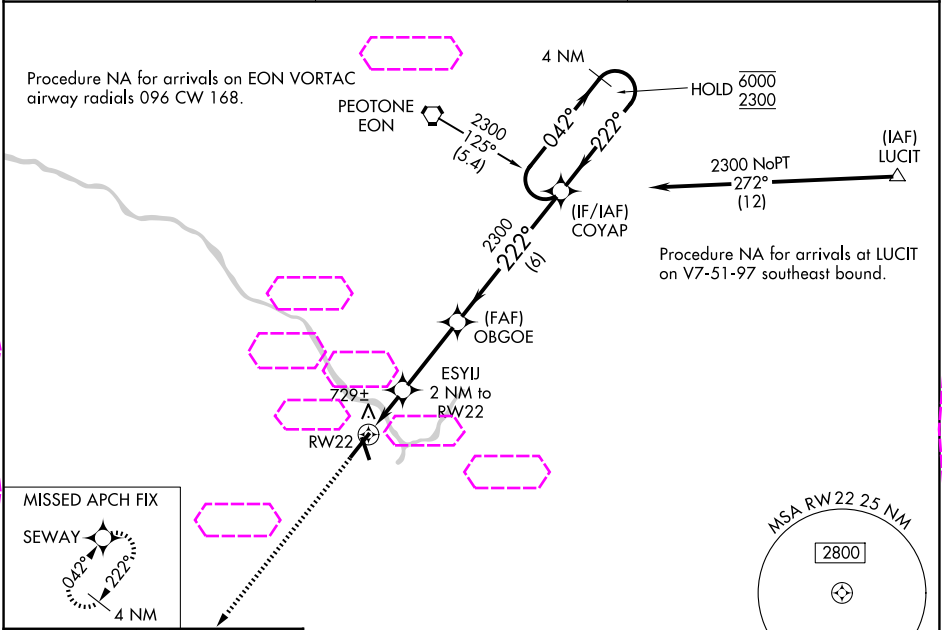
▼

▲

Circling Rwy 16, 34 NA at night. Rwy 22 helicopter visibility reduction below ¾ SM NA.  
For uncompensated Baro-VNAV systems, LNAV/VNAV NA below -16°C or above 54°C.

MISSED APPROACH:  
Climb to 2300 direct  
SEWAY and hold.

AWOS-3 <b>128.475</b>	CHICAGO CENTER <b>132.5 284.7</b>	UNICOM <b>123.0 (CTAF) 0</b>
--------------------------	--------------------------------------	---------------------------------



2300	SEWAY	OBGOE	COYAP	4 NM Holding Pattern
*LNAV only	ESYIJ 2 NM to RW22	2300	222°	042° 6000 222° 2300 GP 3.00° TCH 37
1 NM	1 NM	3.1 NM	6 NM	
CATEGORY	A	B	C	D
LPV DA	880-7/8	250 (300-7/8)		
LNAV/VNAV DA	910-1	280 (300-1)		
LNAV MDA	980-1	350 (400-1)		
CIRCLING	1080-1 450 (500-1)	1100-1 470 (500-1)	1140-1½ 510 (600-1½)	1340-2¼ 710 (800-2¼)

KANKAKEE, ILLINOIS  
Amdt 1B 10SEP20

41°04'N-87°51'W

# RNAV (GPS) RWY 22

EC-3, 07 AUG 2025 to 04 SEP 2025

EC-3, 07 AUG 2025 to 04 SEP 2025