

WAAS CH <b>56232</b> <b>W16A</b>	APP CRS <b>165°</b>	Rwy Idg <b>4398</b> TDZE <b>622</b> Apt Elev <b>630</b>
--	------------------------	---

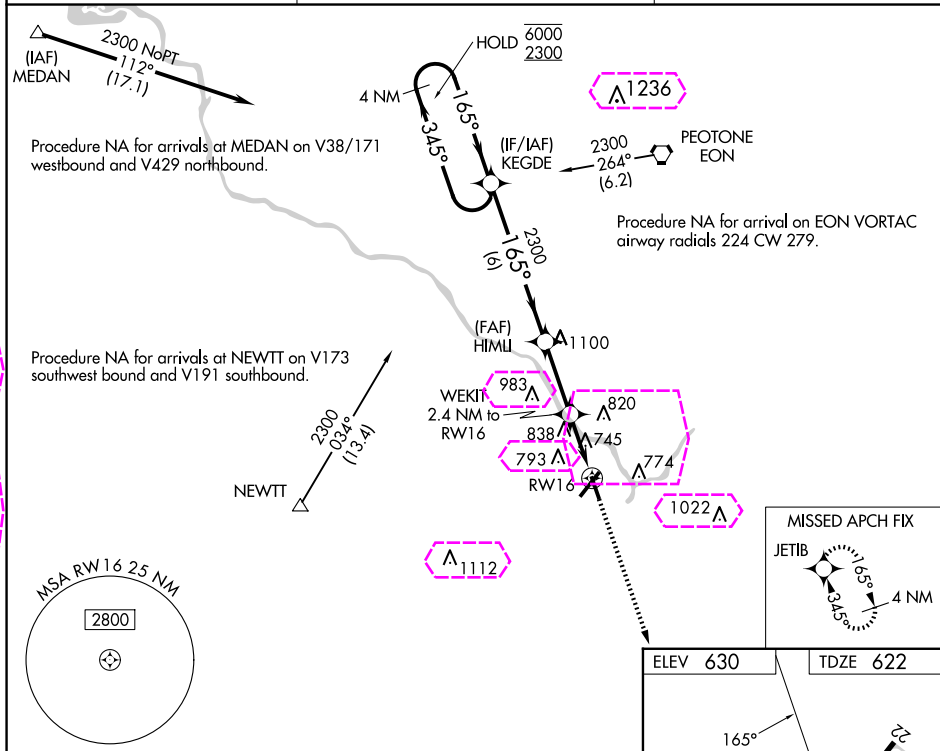
RNAV (GPS) RWY 16  
GREATER KANKAKEE (IKK)

RNP APCH.

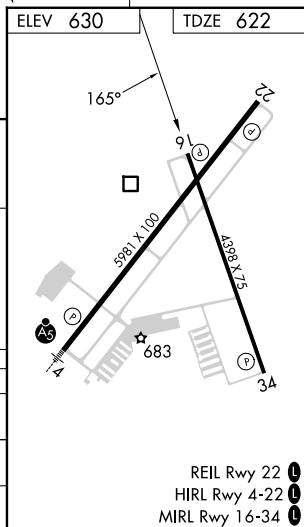
- T** Rwy 16 helicopter visibility reduction below 1 SM NA. Straight-in and Circling Rwy 16  
**A** NA at night, Circling Rwy 34 NA at night.

**MISSED APPROACH:**  
Climb to 2300 direct  
JETIB and hold.

AWOS-3 <b>128.475</b>	CHICAGO CENTER <b>132.5 284.7</b>	UNICOM <b>123.0 (CTAF) 1</b>
--------------------------	--------------------------------------	---------------------------------



CATEGORY	A	B	C	D
LP MDA	1060-1	438 (500-1)	1060-1¼	438 (400-1¼)
LNAV MDA	1100-1	478 (500-1)	1100-1⅜	478 (500-1⅜)
<b>CIRCLING</b>	1100-1	470 (500-1)	1140-1½ 510 (600-1½)	1340-2¼ 710 (800-2¼)



KANKAKEE, ILLINOIS

AL-5278 (FAA)

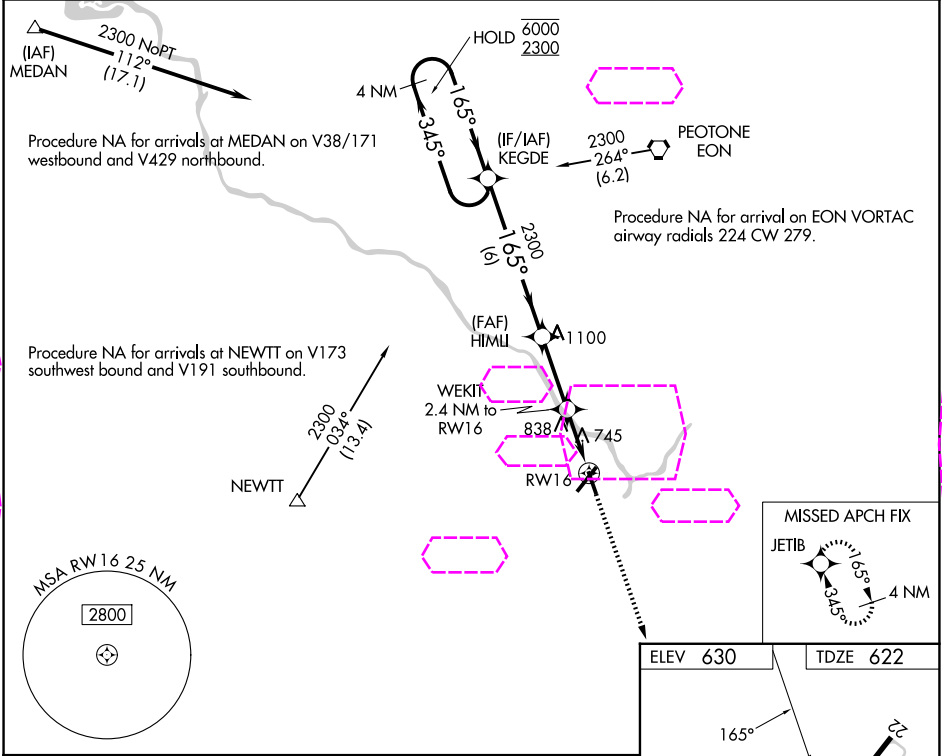
25219

WAAS CH <b>56232</b> <b>W16A</b>	APP CRS <b>165°</b>	Rwy Ldg <b>4398</b> TDZE <b>622</b> Apt Elev <b>630</b>
--	------------------------	---

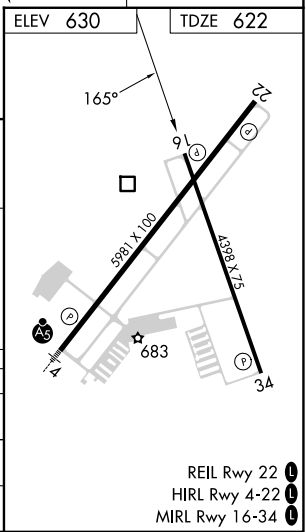
**RNAV (GPS) RWY 16**  
GREATER KANKAKEE (IKK)

RNP APCH.	MISSED APPROACH: Climb to 2300 direct JETIB and hold.
-----------	---

AWOS-3 <b>128.475</b>	CHICAGO CENTER <b>132.5 284.7</b>	UNICOM <b>123.0 (CTAF) 0</b>
--------------------------	--------------------------------------	---------------------------------



4 NM Holding Pattern					2300	JETIB
					↑	✦
CATEGORY	A	B	C	D		
LP MDA	1060-1	438 (500-1)	1060-1¼	438 (400-1¼)		
LNAV MDA	1100-1	478 (500-1)	1100-1⅜	478 (500-1⅜)		
CIRCLING	1100-1	470 (500-1)	1140-1½ 510 (600-1½)	1340-2¼ 710 (800-2¼)		



KANKAKEE, ILLINOIS  
Amdt 1B 10SEP20

41°04'N-87°51'W

GREATER KANKAKEE (IKK)  
**RNAV (GPS) RWY 16**

REIL Rwy 22 0  
HIRL Rwy 4-22 0  
MIRL Rwy 16-34 0

EC-3, 07 AUG 2025 to 04 SEP 2025

EC-3, 07 AUG 2025 to 04 SEP 2025