

KANKAKEE, ILLINOIS

AL-5278 (FAA)

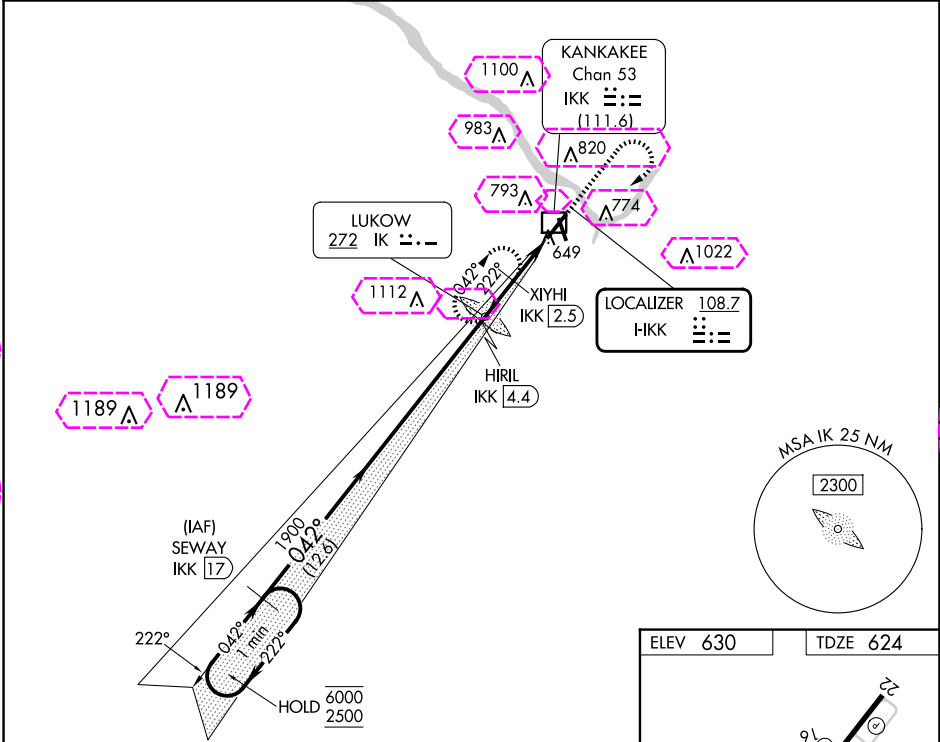
25051

LOC I-IKK <b>108.7</b>	APP CRS <b>042°</b>	Rwy ldg <b>5981</b> TDZE <b>624</b> Apt Elev <b>630</b>
---------------------------	------------------------	--

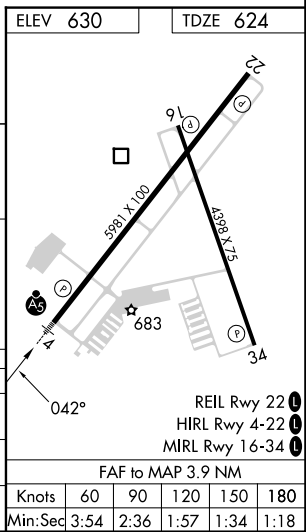
ILS or LOC RWY 4  
GREATER KANKAKEE (IKK)

RADAR required for procedure entry. DME required. ADF required. ⚠ NA Circling for Rwy 16, 34 NA at night. DME from IKK DME. DME use requires simultaneous reception of I-IKK and IKK DME. For inop ALS, increase S-LOC 4 Cat C/D visibility to ¾ SM.		MALSR 	MISSED APPROACH: Climb to 2300 then right turn direct LUKOW LOM and hold.
---	--	-----------	---

AWOS-3 <b>128.475</b>	CHICAGO CENTER <b>132.5 284.7</b>	UNICOM <b>123.0 (CTAF) 0</b>
--------------------------	--------------------------------------	---------------------------------



One Minute Holding Pattern	SEWAY IKK (17)	HIRL IKK (4.4)	IKK LOM	2300	IK
	6000 ← 222° 2500 042° →	1900	XIYHI IKK (2.5)	IKK (1.3)	IKK (0.6)
GS 3.00° TCH 51					
12.6 NM 1.8 NM 1.2 NM 0.8 NM					
CATEGORY	A	B	C	D	
S-ILS 4	824-½		200 (200-½)		
S-LOC 4	920-½		296 (300-½)		
CIRCLING	1080-1 450 (500-1)	1100-1 470 (500-1)	1140-1½ 510 (600-1½)	1340-2¼ 710 (800-2¼)	



KANKAKEE, ILLINOIS  
Amdt 9 26DEC24

41°04'N-87°51'W

GREATER KANKAKEE (IKK)  
ILS or LOC RWY 4

EC-3, 10 JUL 2025 to 07 AUG 2025

EC-3, 10 JUL 2025 to 07 AUG 2025

KANKAKEE, ILLINOIS

AL-5278 (FAA)

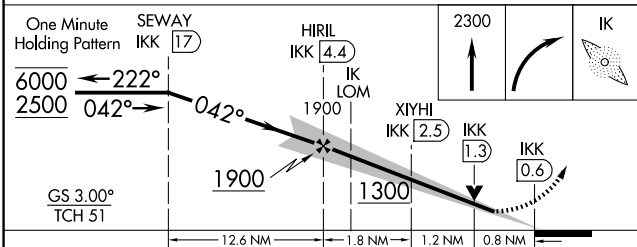
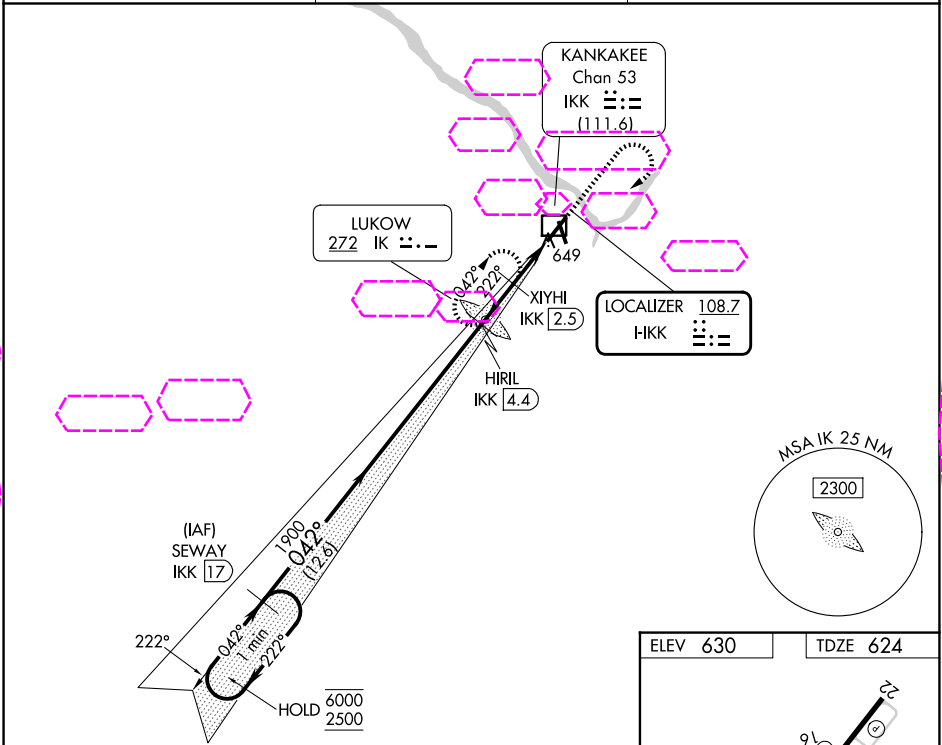
25219

LOC I-IKK <b>108.7</b>	APP CRS <b>042°</b>	Rwy Ldg TDZE Apt Elev	<b>5981</b> <b>624</b> <b>630</b>
---------------------------	------------------------	-----------------------------	---

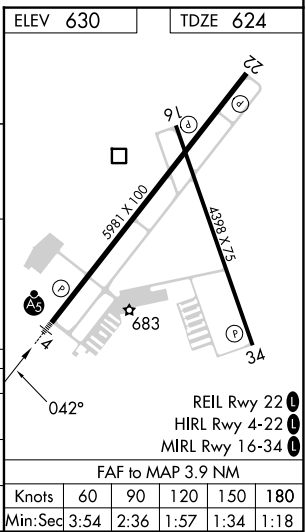
ILS or LOC RWY 4  
GREATER KANKAKEE (IKK)

RADAR required for procedure entry. DME required. ADF required. ⚠ NA Circling to Rwy 16, 34 NA at night. DME from IKK DME. DME use requires simultaneous reception of I-IKK and IKK DME. For inop ALS, increase S-LOC 4 Cat C/D visibility to ¾ SM.		MALSR 	MISSED APPROACH: Climb to 2300 then right turn direct LUKOW LOM and hold.
--	--	-----------	---

AWOS-3 <b>128.475</b>	CHICAGO CENTER <b>132.5 284.7</b>	UNICOM <b>123.0 (CTAF) 0</b>
--------------------------	--------------------------------------	---------------------------------



CATEGORY	A	B	C	D
S-ILS 4		824-½	200 (200-½)	
S-LOC 4		920-½	296 (300-½)	
CIRCLING	1080-1 450 (500-1)	1100-1 470 (500-1)	1140-1½ 510 (600-1½)	1340-2¼ 710 (800-2¼)



KANKAKEE, ILLINOIS  
Amdt 9 26DEC24

41°04'N-87°51'W

GREATER KANKAKEE (IKK)  
ILS or LOC RWY 4

EC-3, 07 AUG 2025 to 04 SEP 2025

EC-3, 07 AUG 2025 to 04 SEP 2025