

SINTON, TEXAS

AL-5274 (FAA)

24137

VORTAC CRP 115.5 Chan 102	APP CRS 138°	Rwy Idg 4073 TDZE 48 Agt Elev 48
---	------------------------	---

VOR RWY 14
SINTON (T69)

DME required.

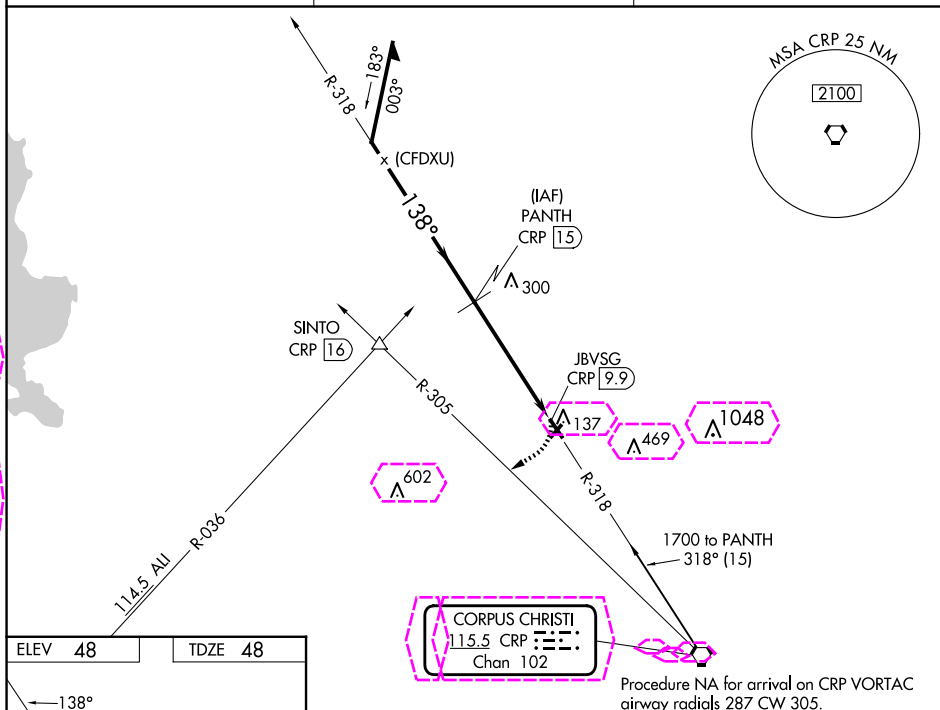
MISSED APPROACH: Climbing right turn to 1800 on heading 230° and CRP VORTAC R-305 to SINTO INT/CRP 16 DME.

T Procedure NA at night.

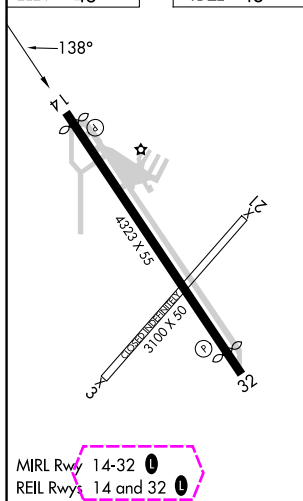
A Rwy 14 helicopter visibility reduction below 1 SM NA.

AWOS-3
118.25

CORPUS APP CON
120.9 348.725

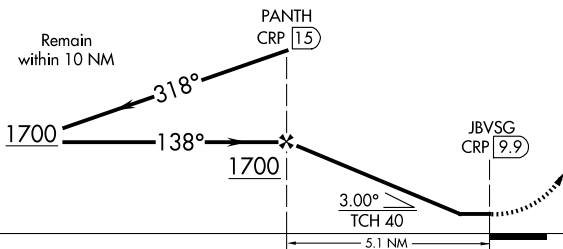
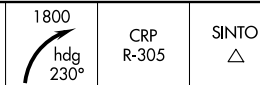
UNICOM
122.8 (CTAF) **L**

ELEV	48		TDZE	48
------	----	--	------	----



MIRL Rwy 14-32 **L**
REIL Rwy 14 and 32 **L**

VGSI and descent angles not coincident
(VGSI Angle 3.00°/TCH 19).



CATEGORY	A	B	C	D
S-14	640-1	592 (600-1)	NA	
CIRCLING	640-1 592 (600-1)	720-1 672 (700-1)	NA	

SINTON, TEXAS
Amdt 1C 31DEC20

28°02' N-97°33' W

SINTON (T69)
VOR RWY 14

SC-3, 10 JUL 2025 to 07 AUG 2025

SC-3, 10 JUL 2025 to 07 AUG 2025

SINTON, TEXAS

AL-5274 (FAA)

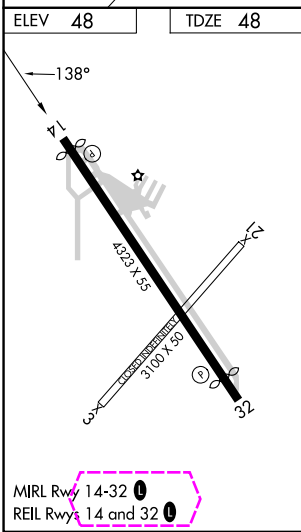
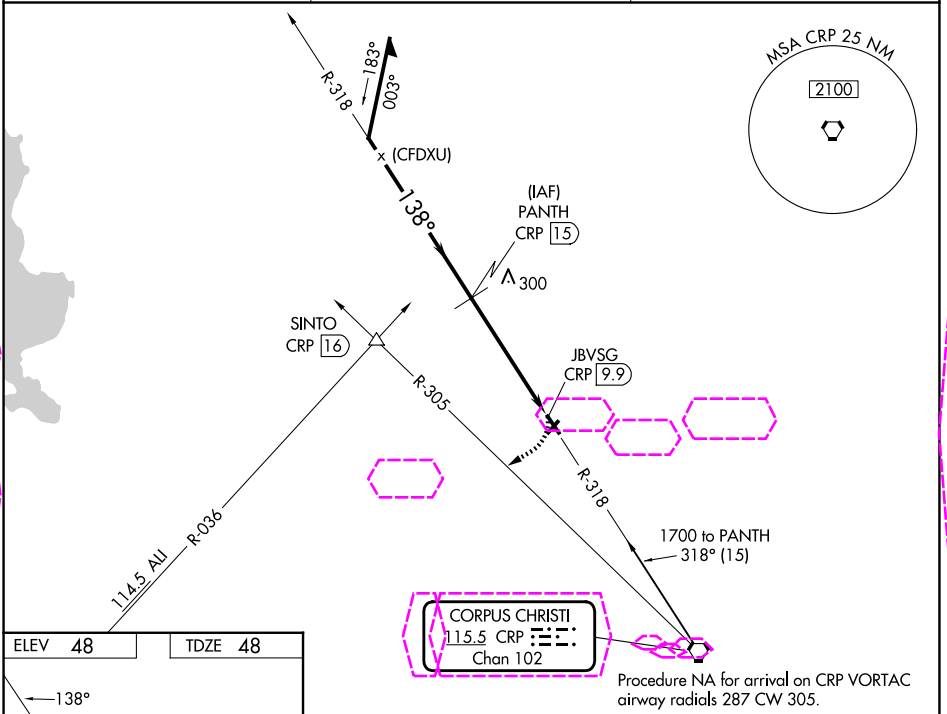
25219

VORTAC CRP	APP CRS	Rwy Ldg	4073
115.5	138°	TDZE	48
Chan 102		Api Elev	48

VOR RWY 14
SINTON (T69)

DME required.	MISSED APPROACH: Climbing right turn to 1800 on heading 230° and CRP VORTAC R-305 to SINTO INT/CRP 16 DME.
Procedure NA at night. Rwy 14 helicopter visibility reduction below 1 SM NA.	

AWOS-3 118.25	CORPUS APP CON 120.9 348.725	UNICOM 122.8 (CTAF) 0
------------------	---------------------------------	--------------------------



VGSI and descent angles not coincident (VGSI Angle 3.00°/TCH 19).		1800 hdg 230°	CRP R-305	SINTO △
Remain within 10 NM		PANTH CRP 15		
1700		318°		
1700		138°		
		3.00° TCH 40		
		5.1 NM		
CATEGORY	A	B	C	D
S-14	640-1	592 (600-1)	NA	
CIRCLING	640-1 592 (600-1)	720-1 672 (700-1)	NA	

SINTON, TEXAS
Amd 1C 31DEC20

28°02' N-97°33' W

SINTON (T69)
VOR RWY 14