

SINTON, TEXAS

AL-5274 (FAA)

24137

APP CRS	Rwy Idg	3923
320°	TDZE	48
	Apt Elev	48

RNAV (GPS) RWY 32

SINTON (T69)

RNP APCH.

- Procedure NA at night.
 Rwy 32 helicopter visibility reduction below 1 SM NA.

MISSED APPROACH: Climb to 1000 then climbing left turn to 2000 direct CRP VORTAC and hold.

AWOS-3

118.25

CORPUS APP CON

120.9 348.725

UNICOM

122.8 (CTAF)

NoPT for arrival on CRP VORTAC
airway radials R-169 CW R-184.

MSA RW32 25 NM

2100

△ 1050

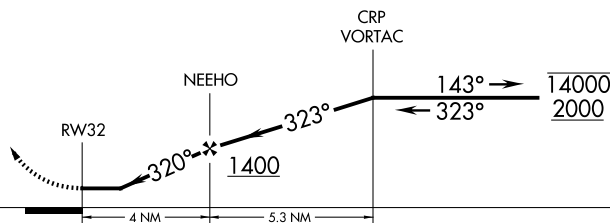
1000

2000

CRP



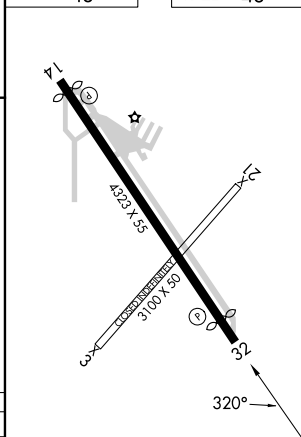
4 NM
Holding Pattern



CATEGORY	A	B	C	D
LNAV MDA	520-1	472 (500-1)	NA	
CIRCLING	620-1 572 (600-1)	720-1 672 (700-1)	NA	

ELEV 48

TDZE 48



MIRL Rwy 14-32

REIL Rwys 14 and 32

SINTON, TEXAS

Orig-B 31DEC20

28°02' N-97°33' W

SINTON (T69)

RNAV (GPS) RWY 32

SC-3, 10 JUL 2025 to 07 AUG 2025

SC-3, 10 JUL 2025 to 07 AUG 2025

SINTON, TEXAS

AL-5274 (FAA)

25219

APP CRS	Rwy Ldg	3923
320°	TDZE	48
	Apt Elev	48

RNAV (GPS) RWY 32

SINTON (T69)

RNP APCH.

- Procedure NA at night.
 Rwy 32 helicopter visibility reduction below 1 SM NA.

MISSED APPROACH: Climb to 1000 then climbing left turn to 2000 direct CRP VORTAC and hold.

AWOS-3

118.25

CORPUS APP CON

120.9 348.725

UNICOM

122.8 (CTAF)

NoPT for arrival on CRP VORTAC
airway radials R-169 CW R-184.

MSA RW 32 25 NM

2100

1000



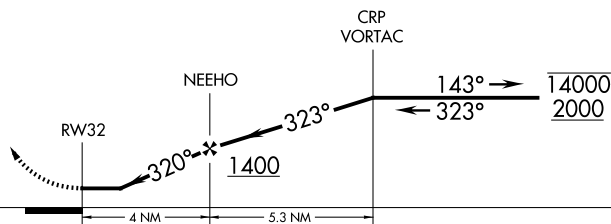
2000



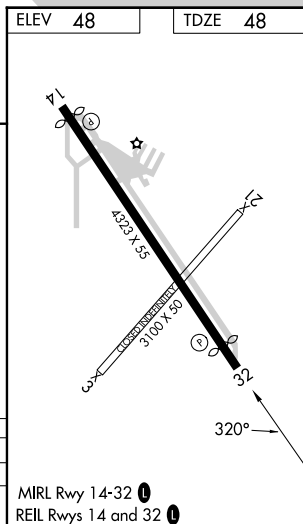
CRP



4 NM
Holding Pattern



CATEGORY	A	B	C	D
LNNAV MDA	520-1	472 (500-1)	NA	
CIRCLING	620-1 572 (600-1)	720-1 672 (700-1)	NA	



SINTON, TEXAS

Orig-B 31DEC20

28°02' N-97°33' W

SINTON (T69)

RNAV (GPS) RWY 32

SC-3, 07 AUG 2025 to 04 SEP 2025

SC-3, 07 AUG 2025 to 04 SEP 2025