

SINTON, TEXAS

AL-5274 (FAA)

24137

APP CRS 140°
Rwy Idg 4073
TDZE 48
Apt Elev 48

RNAV (GPS) RWY 14
SINTON (T69)

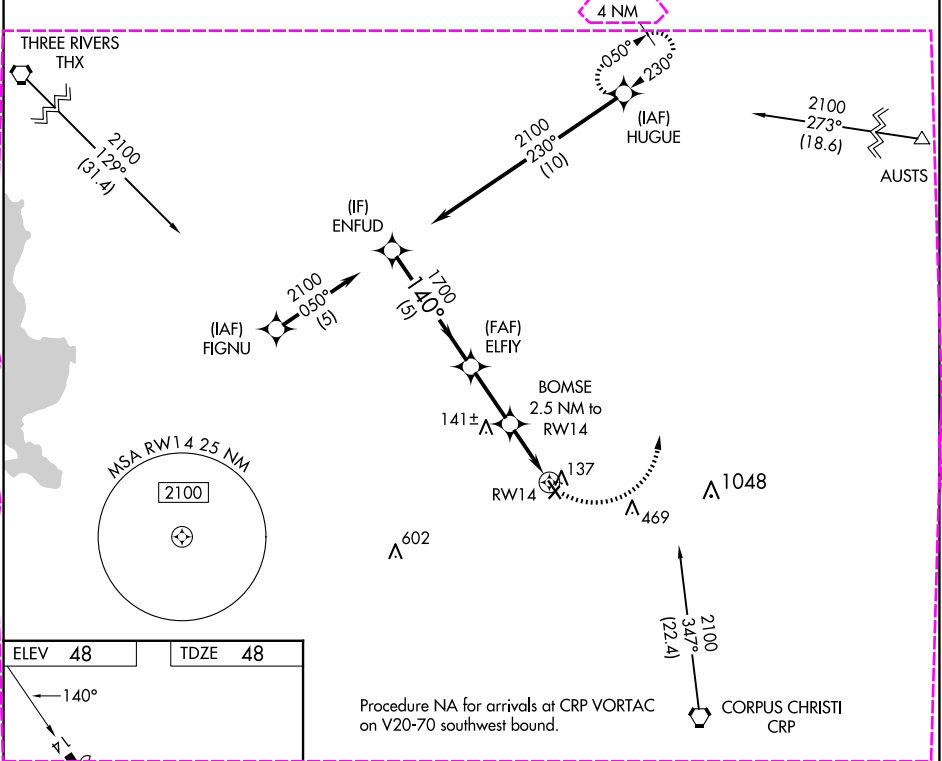
RNP APCH

Procedure NA at night.
Rwy 14 helicopter visibility reduction below 1 SM NA.
MISSED APPROACH: Climbing left turn to 2100 direct HUGUE and hold.

AWOS-3
118.25

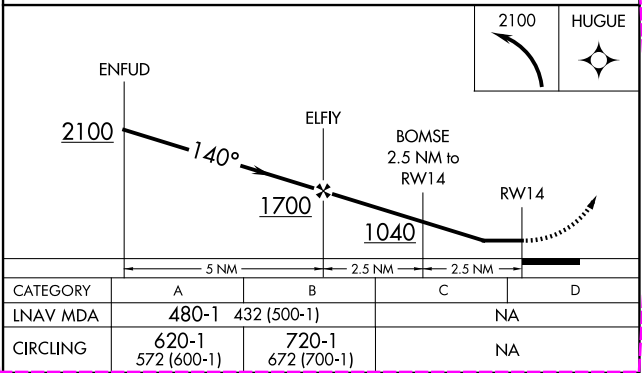
CORPUS APP CON
120.9 348.725

UNICOM
122.8 (CTAF) 0



SC-3, 10 JUL 2025 to 07 AUG 2025

SC-3, 10 JUL 2025 to 07 AUG 2025



SINTON, TEXAS
Orig-B 31DEC20

28°02'N-97°33'W

RNAV (GPS) RWY 14
SINTON (T69)

SINTON, TEXAS

AL-5274 (FAA)

25219

APP CRS	Rwy Ldg	4073
140°	TDZE	48
	Apt Elev	48

RNAV (GPS) RWY 14

SINTON (T69)

RNP APCH - GPS.

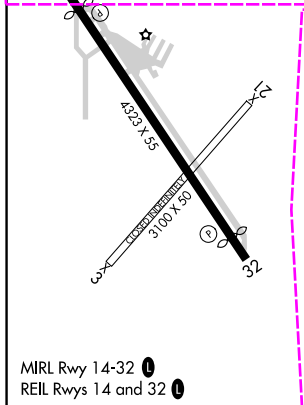
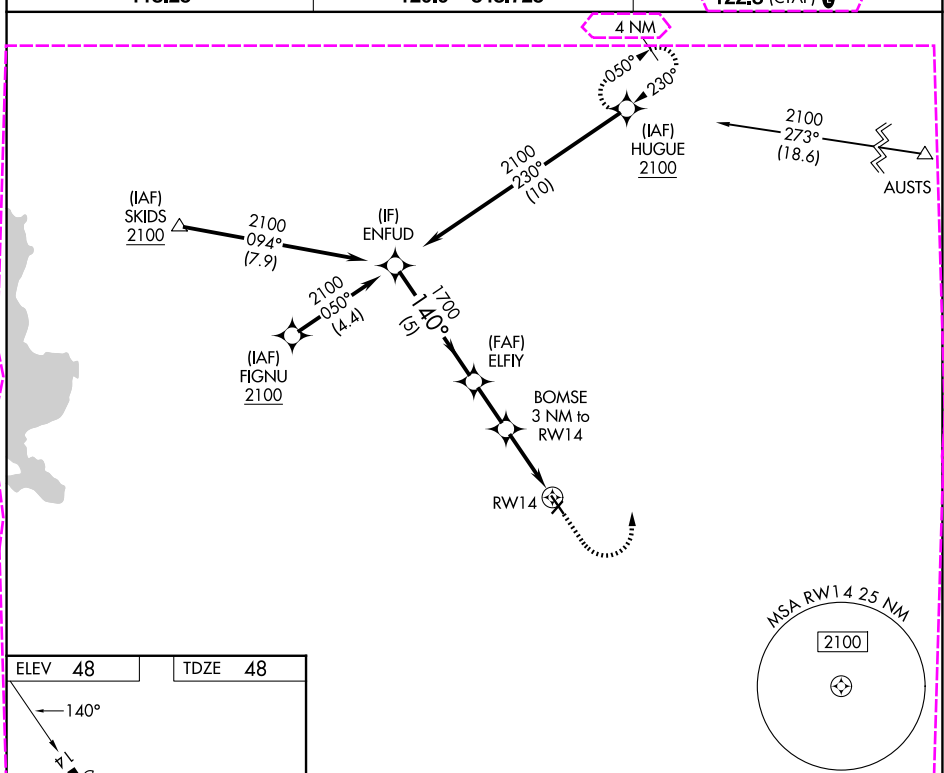
Rwy 14 helicopter visibility reduction below 1 SM NA.
Procedure NA at night.

MISSED APPROACH: Climb to 500 then climbing left turn to 2100 direct HUGUE and hold.

AWOS-3
118.25

CORPUS APP CON
120.9 348.725

UNICOM
122.8 (CTAF) 0



VGSIs and descent angles not coincident (VGSIs Angle 3.00/TCH 19).				500	2100	HUGUE
ENFUD				↑	↪	✧
2100				1700	1040	
140°				3.04°	3 NM to RW14	
5 NM				2.1 NM	3 NM	
CATEGORY	A	B	C	D		
LNAV MDA	420-1	372 (400-1)	NA			
CIRCLING	620-1	720-1	NA			
	572 (600-1)	672 (700-1)				

SINTON, TEXAS
Amdt 1 07AUG25

28°02'N-97°33'W

SINTON (T69)
RNAV (GPS) RWY 14

SC-3, 07 AUG 2025 to 04 SEP 2025

SC-3, 07 AUG 2025 to 04 SEP 2025