




VOR/DME SEG 110.4 Chan 41	APP CRS 034°	Rwy Idg TDZE Apt Elev	N/A N/A 464
---	------------------------	-----------------------------	--

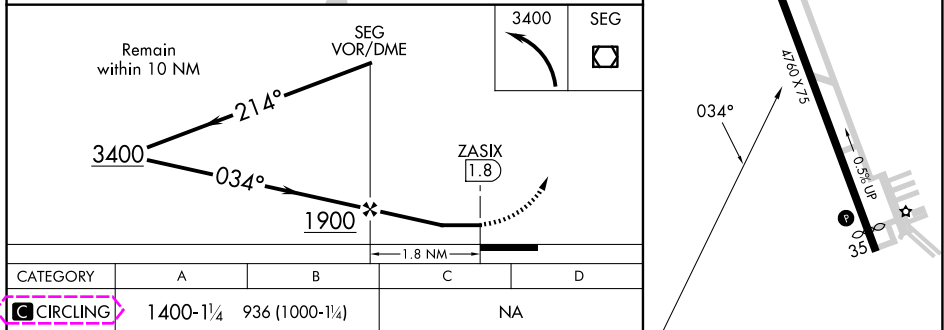
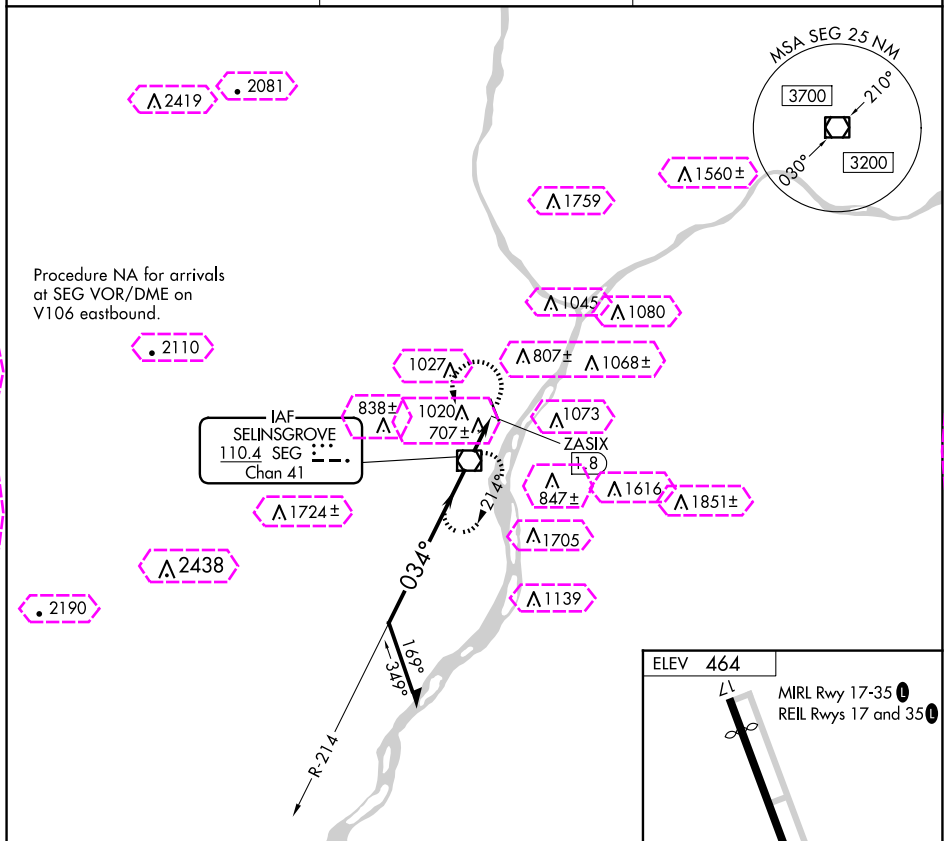
VOR-A

PENN VALLEY (SEG)




 Circling to Rwy 17 NA at night. When Circling to Rwy 35 at night, operational VGSJ required, remain on or above VGSJ glidepath until threshold.

MISSED APPROACH: Climbing left turn to 3400 direct SEG VOR/DME and hold, continue climb-in-hold to 3400.

ASOS 123.975	HARRISBURG APP CON 118.25 269.45	UNICOM 122.7 (CTAF) 0
------------------------	--	---------------------------------



SELINGSGROVE, PENNSYLVANIA

Amdt 7D 15AUG19

PENN VALLEY (SEG)

VOR-A

40°49'N - 76°52'W

SELINGSGROVE, PENNSYLVANIA

AL-5273 (FAA)

25219

VOR/DME SEG 110.4 Chan 41	APP CRS 034°	Rwy Ldg TDZE Apt Elev	N/A N/A 464
---	------------------------	-----------------------------	--

VOR-A

PENN VALLEY (SEG)

⚠
⚠ **13°C**

Circling to Rwy 17 NA at night. When Circling to Rwy 35 at night, operational VGSI required, remain on or above VGSI glidepath until threshold.

MISSED APPROACH: Climbing left turn to 3400 direct SEG VOR/DME and hold, continue climb-in-hold to 3400.

ASOS 123.975	HARRISBURG APP CON 118.25 269.45	UNICOM 122.7 (CTAF) 0
------------------------	--	---------------------------------

