

SELINGSGROVE, PENNSYLVANIA

AL-5273 (FAA)

24361

WAAS CH 97639 W17A	APP CRS 170°	Rwy Idg 4372 TDZE 456 Apt Elev 464
--	------------------------	--

RNAV (GPS) RWY 17

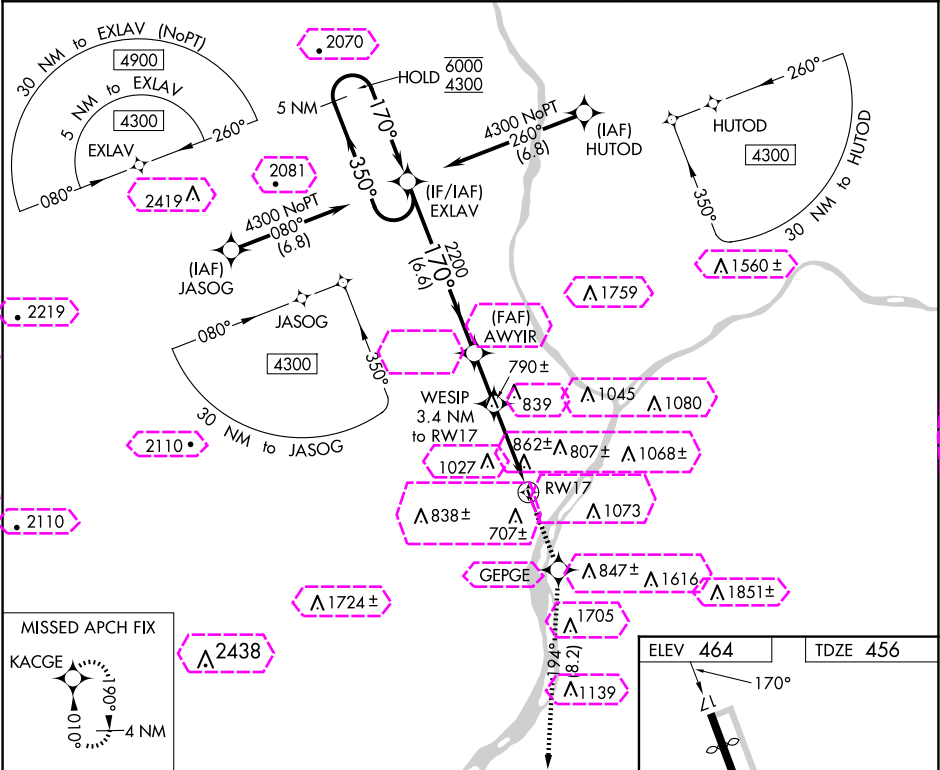
PENN VALLEY (SE/G)

RNP APCH - GPS.

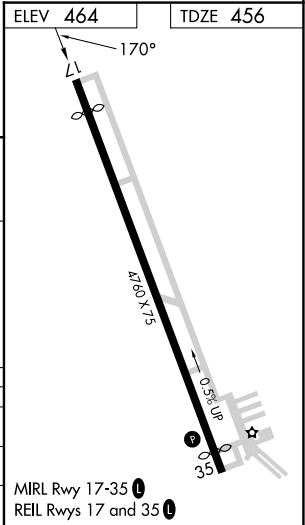
⚠ Rwy 17 helicopter visibility reduction below 1 SM NA. Straight-in Rwy 17 NA at night, Circling Rwy 17 NA at night.

MISSED APPROACH: Climb to 3900 direct GEPGE and on track 194° to KACGE and hold, continue climb-in-hold to 3900.

ASOS 123.975	HARRISBURG APP CON 118.25 269.45	UNICOM 122.7 (CTAF) 0
------------------------	--	---------------------------------



5 NM Holding Pattern		EXLAV	3900	GEPGE	tr 194°	KACGE
6000 ← 350°		AWYIR	Visual Segment - Obstacles.			
4300 → 170°		2200	1580	WESIP 3.4 NM to RW17	RW17	
		6.6 NM	2 NM	3.4 NM		
CATEGORY	A	B	C	D		
LP MDA	1200-1 744 (800-1)	1200-1¼ 744 (800-1¼)	1200-2 744 (800-2)			
LNAV MDA	1260-1 804 (800-1)	1260-1¼ 804 (800-1¼)	1260-2½ 804 (800-2½)			
CIRCLING	1400-1¼	936 (1000-1¼)	1420-3 956 (1000-3)	1600-3 1136 (1200-3)		



SELINGSGROVE, PENNSYLVANIA
Amdt 1B 26DEC24

40°49'N-76°52'W

RNAV (GPS) RWY 17

NE-4, 10 JUL 2025 to 07 AUG 2025

NE-4, 10 JUL 2025 to 07 AUG 2025

WAAS CH 97639 W17A	APP CRS 170°	Rwy Ldg 4372 TDZE 456 Apt Elev 464
--	------------------------	---

RNAV (GPS) RWY 17
PENN VALLEY (SEG)

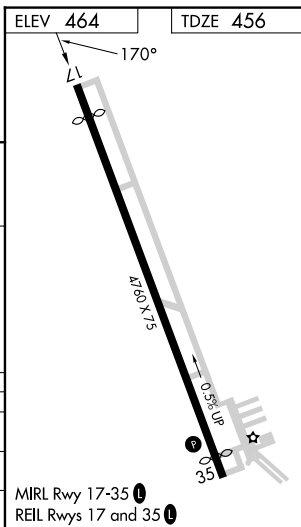
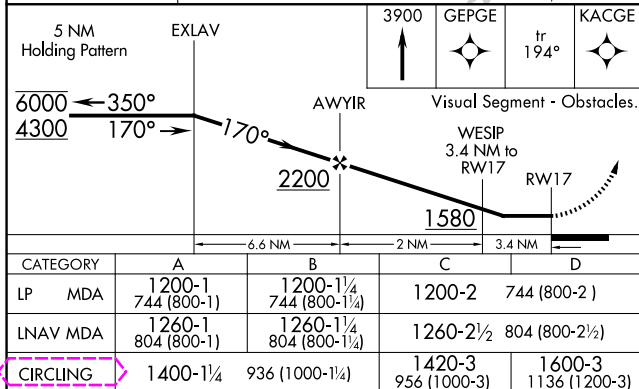
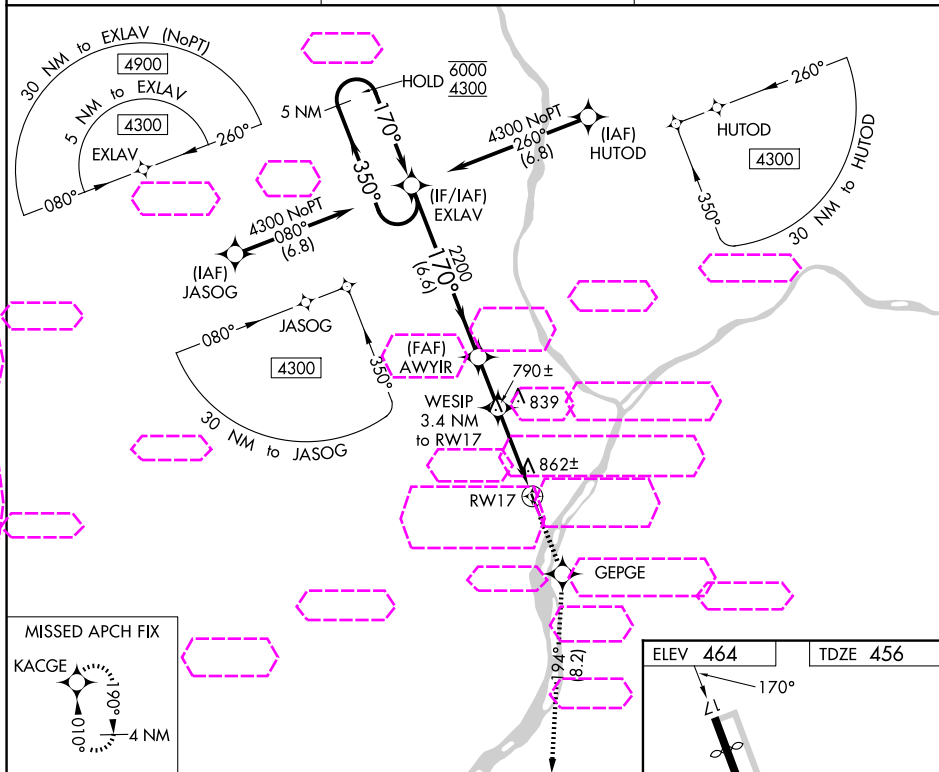
RNP APCH - GPS.	
-----------------	--

T Rwy 17 helicopter visibility reduction below 1 SM NA. Straight-in Rwy 17
A NA at night, Circling Rwy 17 NA at night.

MISSED APPROACH: Climb to 3900 direct GEPGE and on track 194° to KACGE and hold, continue climb-in-hold to 3900

ASOS
123.975

HARRISBURG APP CON	
118.25	269.45

UNICOM
122.7 (CTAF) **L**

SELINGROVE, PENNSYLVANIA
Amdt 1B 26DEC24

40°49'N-76°52'W

PENN VALLEY (SEG)
RNAV (GPS) RWY 17