

VOR RWY 34

GRAND RAPIDS, MINNESOTA

AL-5258 (FAA)


25219

VOR/DME GPZ	APP CRS	Rwy Ldg
114.65	334°	5756
Chan 93(Y)		TDZE 1356
		Apt Elev 1356

VOR RWY 34

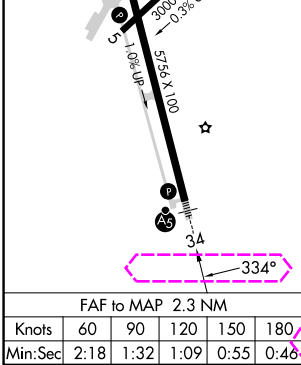
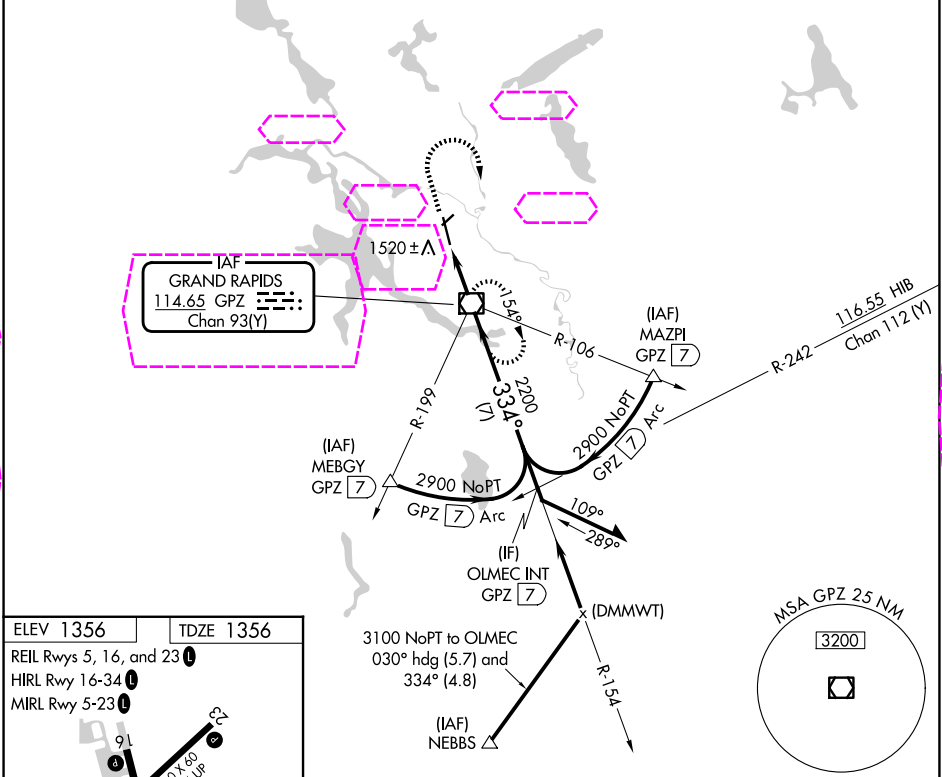
GRAND RAPIDS/ITASCA COUNTY-GORDON NEWSTROM FLD (GPZ)

⚠ VDP NA when using Hibbings altimeter setting. Circling Rwy 5 NA at night.
⚠ Circling NA for Cat D east of Rwy 16-34. When local altimeter setting not received, use Hibbing altimeter setting and increase all MDAs 80 feet, increase S-34 Cat C visibility 1/8 SM and Circling Cats C/D visibility 1/4 SM.

MALSR 

MISSED APPROACH: Climb to 3100 then right turn direct GPZ VOR/DME and hold.

AWOS-3PT 118.425	MINNEAPOLIS CENTER 127.9 281.45	UNICOM 122.8 (CTAF) 0
---------------------	------------------------------------	--------------------------



3100	GPZ	GPZ VOR/DME	3100	Remain within 10 NM
GPZ 2.3	GPZ 1	3100	154°	3000
GPZ 2.3	GPZ 1	2200	334°	2200
1.3 NM	1 NM			
CATEGORY	A	B	C	D
S-34	1800-1/2	444 (500-1/2)	1800-7/8 444 (500-7/8)	1800-1 444 (500-1)
CIRCLING	1900-1	544 (600-1)	1900-1 1/2 544 (600-1 1/2)	2000-2 644 (700-2)

NC-1, 07 AUG 2025 to 04 SEP 2025

NC-1, 07 AUG 2025 to 04 SEP 2025