

GRAND RAPIDS, MINNESOTA

AL-5258 (FAA)

21168

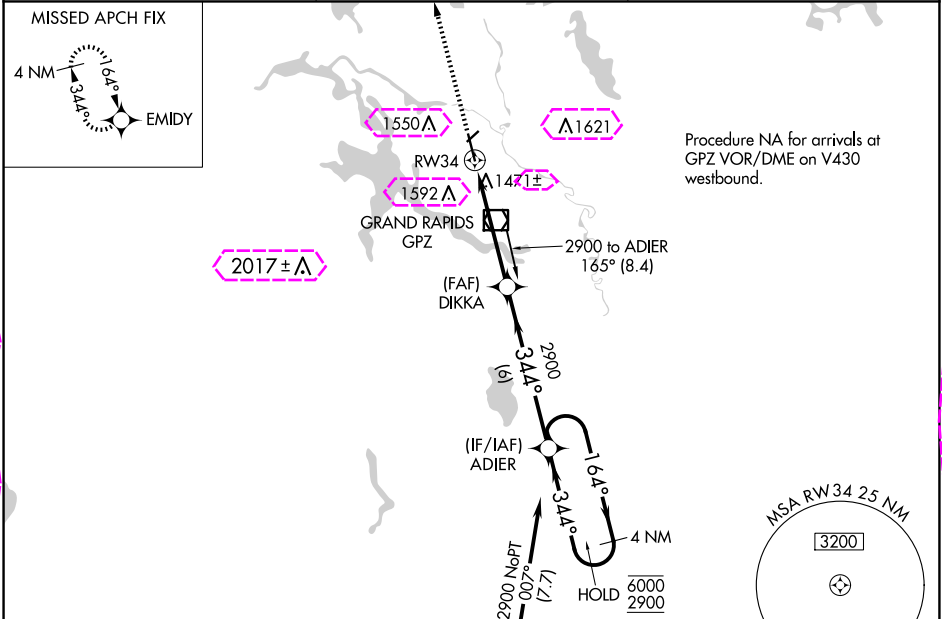
WAAS CH 86412 W34A	APP CRS 344°	Rwy Idg TDZE 1356 Apt Elev 1356
--	------------------------	---

RNAV (GPS) RWY 34

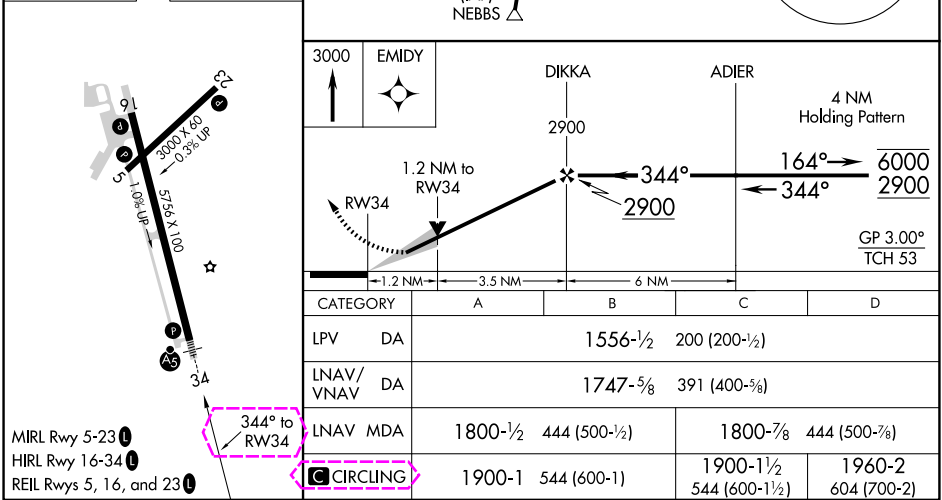
GRAND RAPIDS/ITASCA COUNTY-GORDON NEWSTROM FLD (GPZ)

RNP APCH.	MALSR	MISSED APPROACH: Climb to 3000 direct EMIDY and hold.
<div><div>▼</div><div>▲</div></div> <div>Circling to Rwy 5, 23 NA at night. Circling NA for Cat D east of Rwy 16-34. For uncompensated Baro-VNAV systems, LNAV/VNAV NA below -17°C or above 54°C.</div>	<div><div>AS</div><div></div></div>	

AWOS-3PT 118.425	MINNEAPOLIS CENTER 127.9 281.45	UNICOM 122.8 (CTAF) 0
----------------------------	---	---------------------------------



ELEV 1356	TDZE 1356
-----------	-----------



GRAND RAPIDS, MINNESOTA

AL-5258 (FAA)

25219

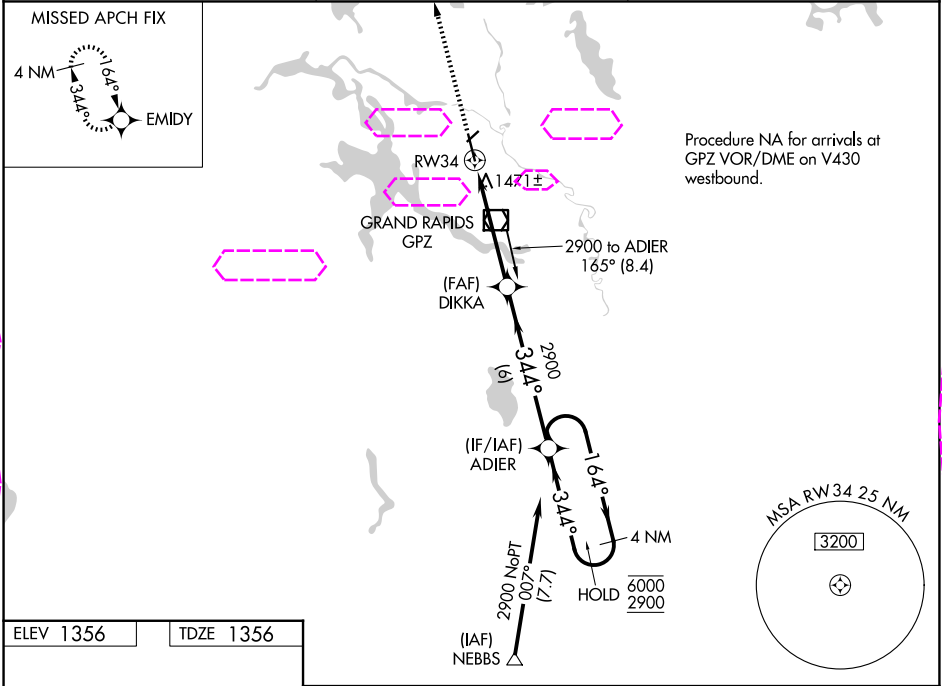
WAAS CH 86412 W34A	APP CRS 344°	Rwy Ldg TDZE 1356 Apt Elev 1356
--	------------------------	---

RNAV (GPS) RWY 34

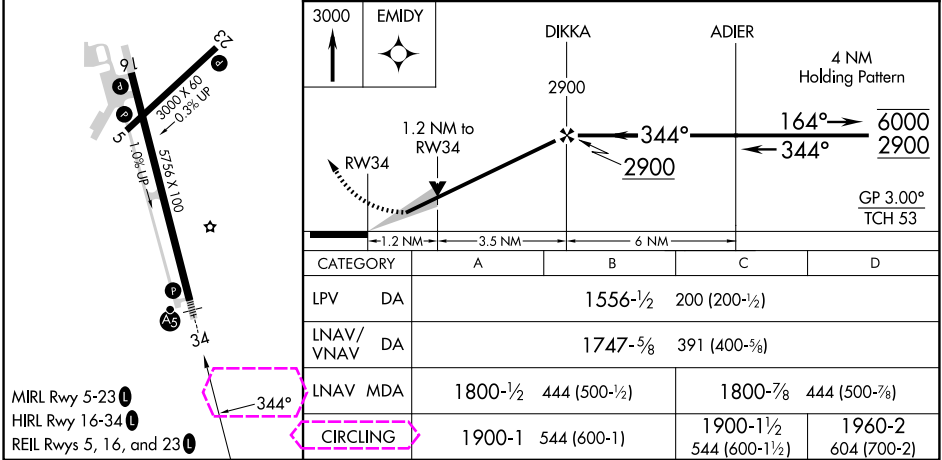
GRAND RAPIDS/ITASCA COUNTY-GORDON NEWSTROM FLD (GPZ)

RNP APCH.	MALSR	MISSED APPROACH: Climb to 3000 direct EMIDY and hold.
▼ Circling to Rwy 5, 23 NA at night. Circling NA for Cat D east of Rwy 16-34. ▲ For uncompensated Baro-VNAV systems, LNAV/VNAV NA below -17°C or above 54°C.	AS	

AWOS-3PT 118.425	MINNEAPOLIS CENTER 127.9 281.45	UNICOM 122.8 (CTAF) 0
----------------------------	---	---------------------------------



ELEV 1356	TDZE 1356
-----------	-----------



GRAND RAPIDS, MINNESOTA
Amdt 1 22APR21

GRAND RAPIDS/ITASCA COUNTY-GORDON NEWSTROM FLD (GPZ)
47°13'N-93°31'W
RNAV (GPS) RWY 34

NC-1, 07 AUG 2025 to 04 SEP 2025

NC-1, 07 AUG 2025 to 04 SEP 2025