

GRAND RAPIDS, MINNESOTA

AI-5258 (FAA)

21168

APP CRS	Rwy Idg	5756
164°	TDZE	1327
	Apt Elev	1356

RNAV (GPS) RWY 16

GRAND RAPIDS/ITASCA COUNTY-GORDON NEWSTROM FLD (GPZ)

RNP APCH.

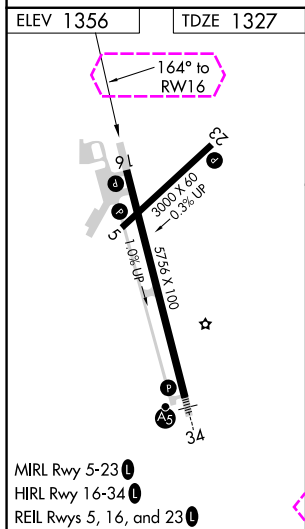
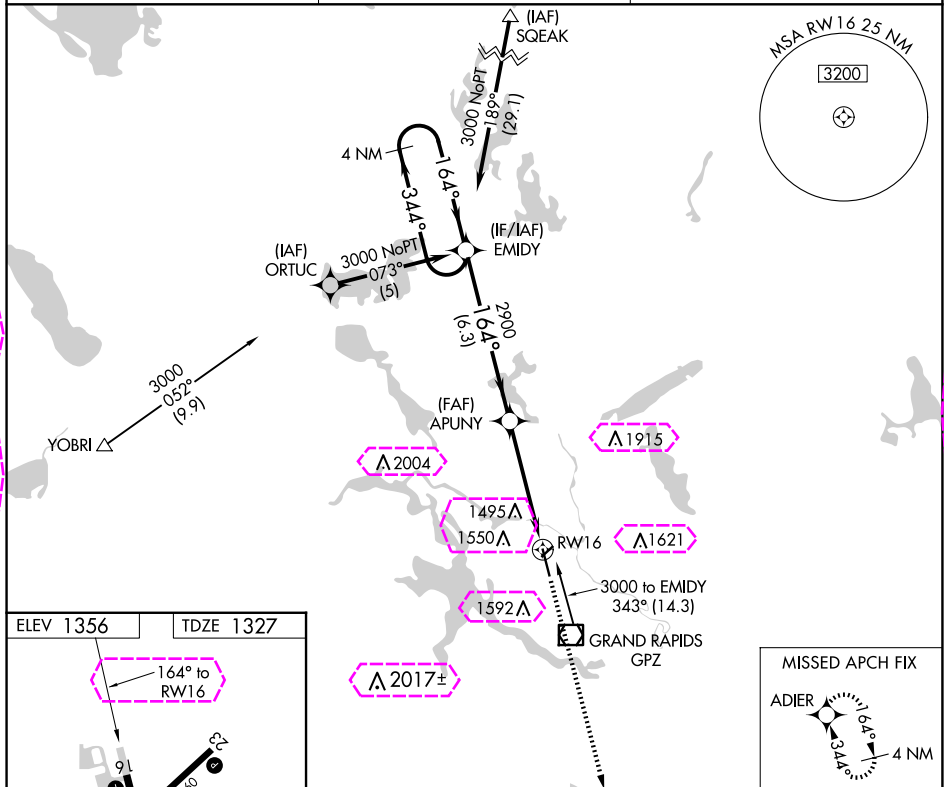
⚠ Circling Rwy 5 NA at night. Circling NA for Cat D east of Rwy 16-34.
⚠ When local altimeter setting not received, use Hibbing altimeter setting and increase all MDAs 80 feet, increase LNAV Cat C visibility 1/8 SM and Circling Cats C/D visibility 1/4 SM.

MISSED APPROACH: Climb to 2900 direct ADIER and hold.

AWOS-3PT
118.425

MINNEAPOLIS CENTER
127.9 281.45

UNICOM
122.8 (CTAF) 0



<div>4 NM Holding Pattern</div> <div>EMIDY</div> <div>APUNY</div> <div>2900</div> <div>3.04° TCH 47</div> <div>6.3 NM</div> <div>4.8 NM</div> <div>RW16</div>				<div>2900</div> <div>ADIER</div>
<div>3000</div> <div>344°</div> <div>164°</div> <div>164°</div>				<div>↑</div> <div>✦</div>
CATEGORY	A	B	C	D
LNAV MDA	1760-1	433 (500-1)	1760-1¼ 433 (500-1¼)	1760-1½ 433 (500-1½)
<div>CIRCLING</div>	1900-1	544 (600-1)	1900-1½ 544 (600-1½)	2000-2 644 (700-2)

GRAND RAPIDS, MINNESOTA
Orig-C 21MAY20

GRAND RAPIDS/ITASCA COUNTY-GORDON NEWSTROM FLD (GPZ)
47°13'N-93°31'W

RNAV (GPS) RWY 16

GRAND RAPIDS, MINNESOTA

AI-5258 (FAA)

25219

APP CRS	Rwy Ldg	5756
164°	TDZE	1327
	Apt Elev	1356

RNAV (GPS) RWY 16

GRAND RAPIDS/ITASCA COUNTY-GORDON NEWSTROM FLD (GPZ)

RNP APCH.

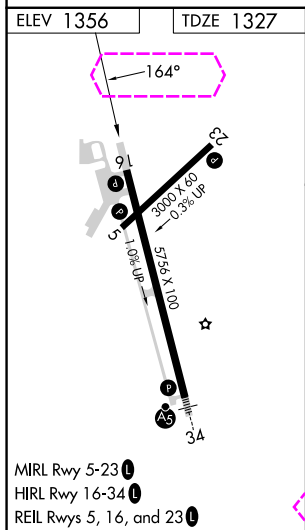
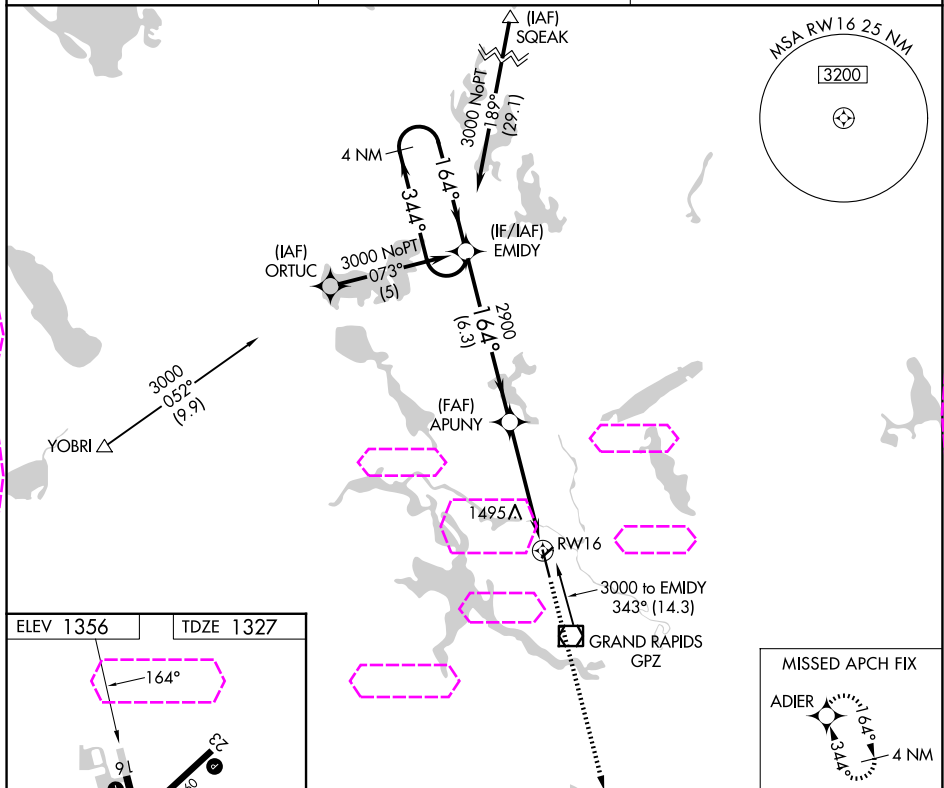
⚠ Circling Rwy 5 NA at night. Circling NA for Cat D east of Rwy 16-34.
⚠ When local altimeter setting not received, use Hibbing altimeter setting and increase all MDAs 80 feet; increase LNAV Cat C visibility ½ SM and Circling Cats C/D visibility ¼ SM.

MISSED APPROACH: Climb to 2900 direct ADIER and hold.

AWOS-3PT
118.425

MINNEAPOLIS CENTER
127.9 281.45

UNICOM
122.8 (CTAF) 0



<div>4 NM Holding Pattern</div> <div>EMIDY</div> <div>APUNY</div> <div>2900</div> <div>3.04° TCH 47</div> <div>6.3 NM</div> <div>4.8 NM</div> <div>RW16</div>				<div>2900</div> <div>ADIER</div>
<div>3000</div> <div>← 344°</div> <div>164° →</div> <div>164°</div> <div>2900</div> <div>3.04° TCH 47</div> <div>6.3 NM</div> <div>4.8 NM</div> <div>RW16</div>				<div>2900</div> <div>ADIER</div>
CATEGORY	A	B	C	D
LNAV MDA	1760-1	433 (500-1)	1760-1¼ 433 (500-1¼)	1760-1½ 433 (500-1½)
CIRCLING	1900-1	544 (600-1)	1900-1½ 544 (600-1½)	2000-2 644 (700-2)

GRAND RAPIDS, MINNESOTA
Orig-C 21MAY20

GRAND RAPIDS/ITASCA COUNTY-GORDON NEWSTROM FLD (GPZ)
47°13'N-93°31'W

RNAV (GPS) RWY 16

NC-1, 07 AUG 2025 to 04 SEP 2025

NC-1, 07 AUG 2025 to 04 SEP 2025