

GRAND RAPIDS, MINNESOTA

AL-5258 (FAA)

23222

LOC I-GPZ 110.1	APP CRS 344°	Rwy Idg 5756
		TDZE 1356
		Apt Elev 1356

ILS or LOC RWY 34

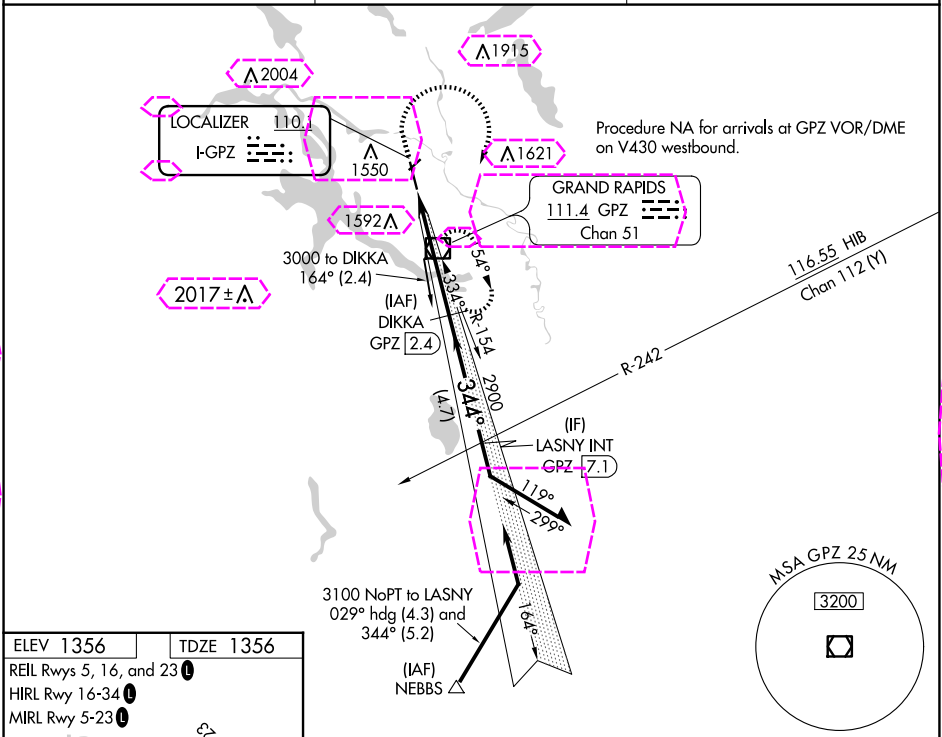
GRAND RAPIDS/ITASCA COUNTY-GORDON NEWSTROM FLD (GPZ)

DME required for LOC only.

MALSR

MISSED APPROACH: Climb to 3100 then right turn direct GPZ VOR/DME and hold.

AWOS-3PT 118.425	MINNEAPOLIS CENTER 127.9 281.45	UNICOM 122.8 (CTAF) 0
----------------------------	---	--



ELEV 1356 TDZE 1356

REIL Rwy 5, 16, and 23

HIRL Rwy 16-34

MIRL Rwy 5-23

FAF to MAP 4.7 NM

Knots	60	90	120	150	180
Min:Sec	4:42	3:08	2:21	1:53	1:34

3100	GPZ	DIKKA GPZ (2.4)	Remain within 10 NM	
GPZ VOR/DME	GPZ (1.1)	2900	164°	3000
GPZ (2.4)	GPZ (1.1)	2900	344°	2900
1.2		3.5 NM	GS 3.00° TCH 53	
CATEGORY	A	B	C	D
S-ILS 34	1556-½ 200 (200-½)			
S-LOC 34	1800-½ 444 (500-½)		1800-¾ 444 (500-¾)	
CIRCLING		1900-1 544 (600-1)	1900-1½ 544 (600-1½)	1960-2 604 (700-2)

GRAND RAPIDS, MINNESOTA
Amdt 3 22APR21

GRAND RAPIDS/ITASCA COUNTY-GORDON NEWSTROM FLD (GPZ)
47°13'N-93°31'W

ILS or LOC RWY 34

GRAND RAPIDS, MINNESOTA

AL-5258 (FAA)

25219

LOC I-GPZ 110.1	APP CRS 344°	Rwy Ldg 5756
	TDZE 1356	
	Apt Elev 1356	

ILS or LOC RWY 34

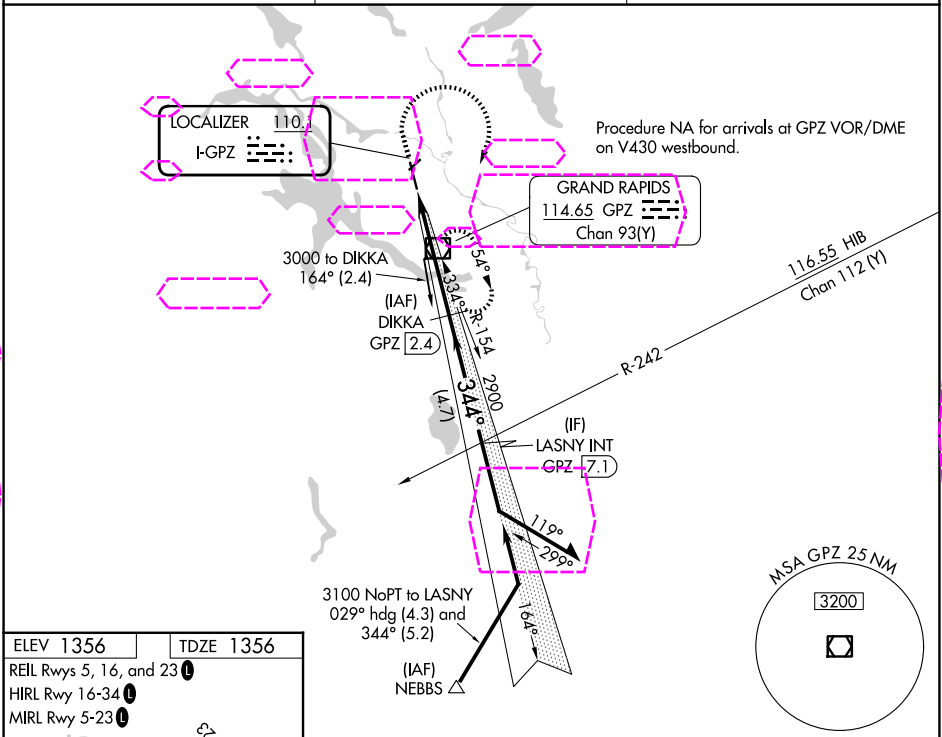
GRAND RAPIDS/ITASCA COUNTY-GORDON NEWSTROM FLD (GPZ)

DME required for LOC only.

MALSR

MISSED APPROACH: Climb to 3100 then right turn direct GPZ VOR/DME and hold.

AWOS-3PT 118.425	MINNEAPOLIS CENTER 127.9 281.45	UNICOM 122.8 (CTAF) 0
----------------------------	---	--



ELEV 1356 TDZE 1356



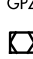
REIL Rwy 5, 16, and 23

HIRL Rwy 16-34

MIRL Rwy 5-23

FAF to MAP 4.7 NM

Knots	60	90	120	150	180
Min:Sec	4:42	3:08	2:21	1:53	1:34

3100				GPZ	DIKKA GPZ 2.4	Remain within 10 NM
				GPZ VOR/DME	2900	
				GPZ 2.4		
				GPZ 1.1		
					2900	3000
					GS 3.00° TCH 53	
				1.2	3.5 NM	
CATEGORY	A	B	C	D		
S-ILS 34	1556-½ 200 (200-½)					
S-LOC 34	1800-½ 444 (500-½)			1800-¾ 444 (500-¾)		
CIRCLING	1900-1 544 (600-1)			1900-1½ 544 (600-1½)		1960-2 604 (700-2)

GRAND RAPIDS, MINNESOTA
Amdt 3 22APR21

GRAND RAPIDS/ITASCA COUNTY-GORDON NEWSTROM FLD (GPZ)
47°13'N-93°31'W
ILS or LOC RWY 34

NC-1, 07 AUG 2025 to 04 SEP 2025

NC-1, 07 AUG 2025 to 04 SEP 2025