

WILLMANTIC, CONNECTICUT

AL-2520 (FAA)

23222

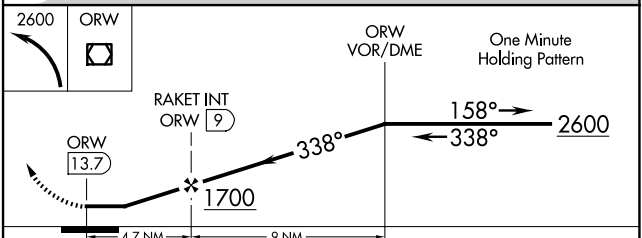
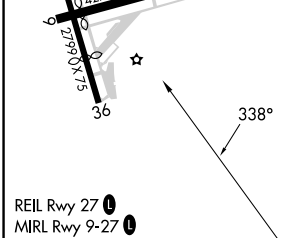
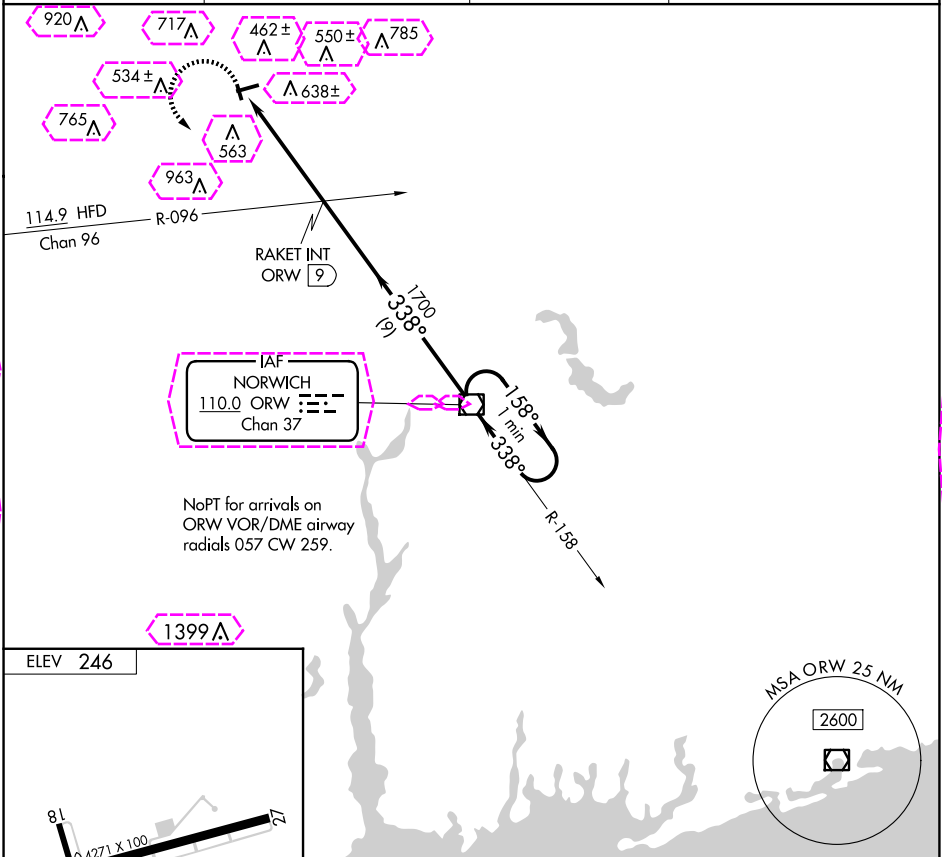
VOR/DME ORW 110.0 Chan 37	APP CRS 338°	Rwy Idg TDZE Apt Elev	N/A N/A 246
---	------------------------	-----------------------------	--

VOR-A

WINDHAM (IJD)

 Procedure NA at night. Visibility reduction by helicopters NA.	MISSED APPROACH: Climbing left turn to 2600 direct ORW VOR/DME and hold.
---	---

ASOS 133.675	BRADLEY APP CON 127.8 269.325	CLNC DEL 128.6	UNICOM 122.975 (CTAF) 0
------------------------	---	--------------------------	--



FAF to MAP 4.7 NM					CATEGORY	A	B	C	D
Knots	60	90	120	150	180	1020-1	1020-1¼	1120-2½	NA
Min:Sec	4:42	3:08	2:21	1:53	1:34	774 (800-1)	774 (800-1¼)	874 (900-2½)	

WILLMANTIC, CONNECTICUT

Amtd 9B 15JUL21

41°45'N-72°11'W

WINDHAM (IJD)

VOR-A

NE-1, 10 JUL 2025 to 07 AUG 2025

NE-1, 10 JUL 2025 to 07 AUG 2025

VOR/DME ORW 110.0 Chan 37	APP CRS 338°	Rwy Ldg TDZE Apt Elev	N/A N/A 246
---	------------------------	-----------------------------	--

VOR-A

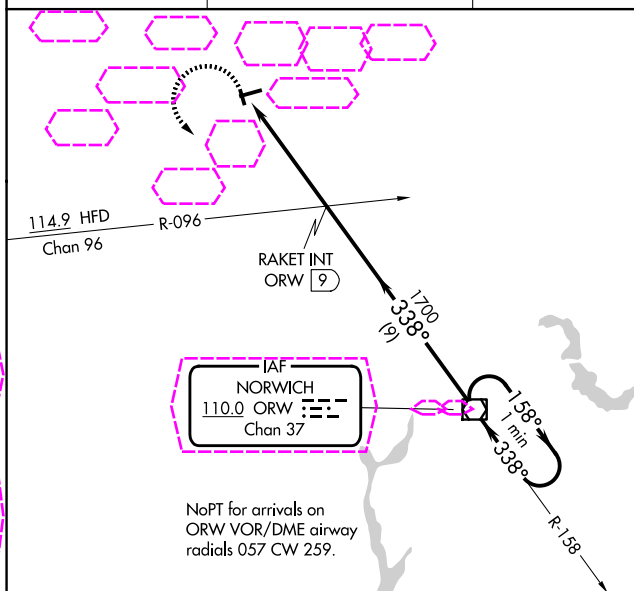
WINDHAM (IJD)

T	Procedure NA at night.
A	Visibility reduction by helicopters NA.

MISSED APPROACH: Climbing left turn to 2600 direct ORW VOR/DME and hold.

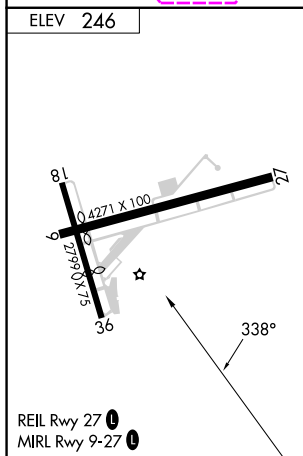
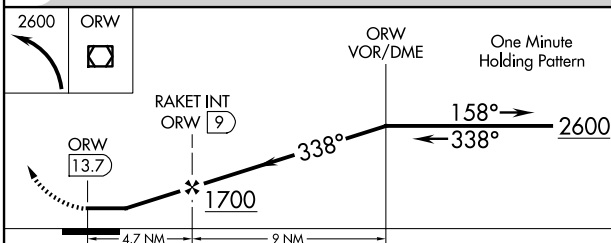
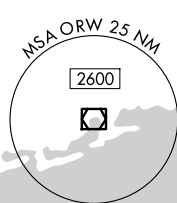
ASOS
133.675

YANKEE APP CON
127.8 269.325

CLNC DEL
128.6UNICOM
122.975 (CTAF) **L**

NoPT for arrivals on
ORW VOR/DME airway
radials 057 CW 259.

ELEV 246

REIL Rwy 27 **L**
MIRL Rwy 9-27 **L**

FAF to MAP 4.7 NM						CATEGORY	A	B	C	D
Knots	60	90	120	150	180	CIRCLING	1020-1	1020-1¼	1120-2½	NA
Min:Sec	4:42	3:08	2:21	1:53	1:34		774 (800-1)	774 (800-1¼)	874 (900-2½)	

WILLIMANTIC, CONNECTICUT

Amdt 9B 15JUL21

WINDHAM (IJD)

VOR-A

41°45'N-72°11'W