

WILLIMANTIC, CONNECTICUT

AL-5250 (FAA)

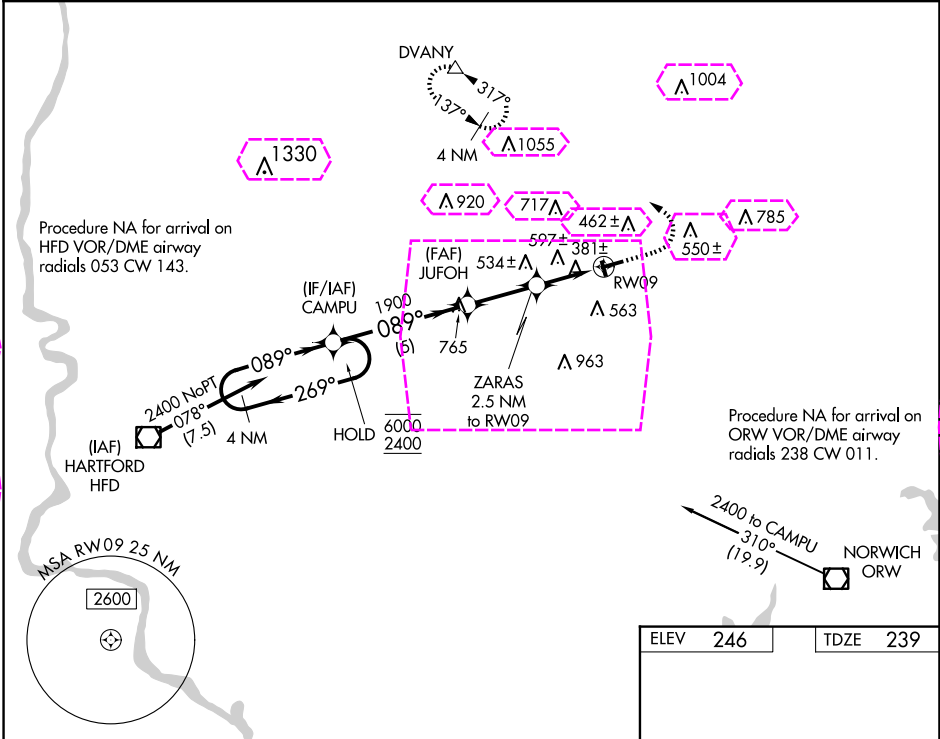
23222

WAAS CH 58024 W09A	APP CRS 089°	Rwy Idg TDZE 239 Apt Elev 246	4013
--	------------------------	---	-------------

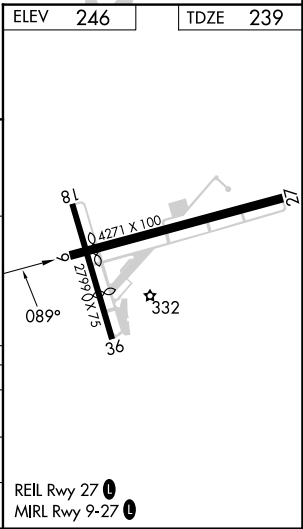
RNAV (GPS) RWY 9

WINDHAM (IJD)

RNP APCH - GPS.		MISSED APPROACH: Climb to 900 then climbing left turn to 2500 direct DVANY and hold, continue climb-in-hold to 2500.	
Procedure NA at night. Rwy 9 helicopter visibility reduction below 1 SM NA.			
ASOS 133.675	BRADLEY APP CON 127.8 269.325	CLNC DEL 128.6	UNICOM 122.975 (CTAF) 0



4 NM Holding Pattern		Visual Segment - Obstacles.		900	2500	DVANY
CAMPU		JUFOH		ZARAS 2.5 NM to RWY 9		
6000 2400		1900		RWY 9		
269°		089°		1080		
5 NM		2.6 NM		2.5 NM		
CATEGORY	A	B	C	D		
LP MDA	640-1	401 (400-1)	640-1 $\frac{1}{8}$ 401 (400-1 $\frac{1}{8}$)	NA		
LNAV MDA	860-1	621 (700-1)	860-1 $\frac{3}{4}$ 621 (700-1 $\frac{3}{4}$)	NA		
CIRCLING	980-1	734 (800-1)	1120-2 $\frac{1}{2}$ 874 (900-2 $\frac{1}{2}$)	NA		



NE-1, 10 JUL 2025 to 07 AUG 2025

NE-1, 10 JUL 2025 to 07 AUG 2025

WILLIMANTIC, CONNECTICUT

AL-5250 (FAA)

25219

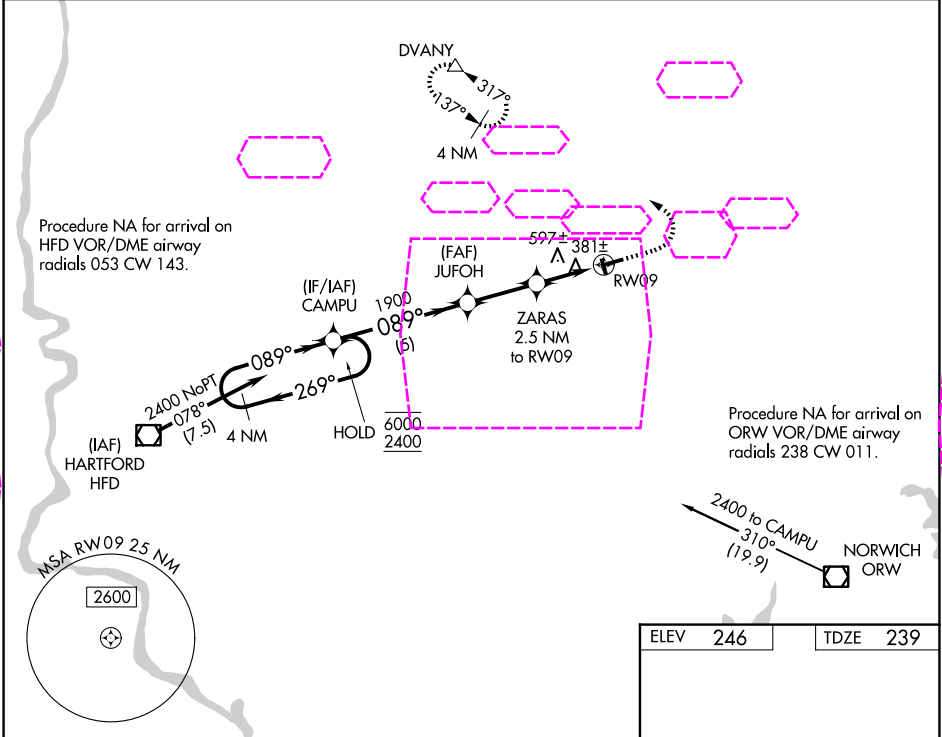
WAAS CH 58024 W09A	APP CRS 089°	Rwy Ldg TDZE 239 Apt Elev 246
--	------------------------	---

RNAV (GPS) RWY 9

WINDHAM (IJD)

RNP APCH - GPS.	MISSED APPROACH: Climb to 900 then climbing left turn to 2500 direct DVANY and hold, continue climb-in-hold to 2500.
<div><div>▼</div><div>▲</div></div> Procedure NA at night. Rwy 9 helicopter visibility reduction below 1 SM NA.	

ASOS 133.675	YANKEE APP CON 127.8 269.325	CLNC DEL 128.6	UNICOM 122.975 (CTAF) 0
------------------------	---	--------------------------	--



4 NM Holding Pattern		Visual Segment - Obstacles.		900	2500	DVANY
CAMPU		JUFOH				
6000 ← 269°		089° →				
2400		1900				
		1080				
		5 NM				
		2.6 NM				
		2.5 NM				
CATEGORY	A	B	C	D		
LP MDA	640-1	401 (400-1)	640-1 1/8 401 (400-1 1/8)	NA		
LNAV MDA	860-1	621 (700-1)	860-1 3/4 621 (700-1 3/4)	NA		
CIRCLING	980-1	734 (800-1)	1120-2 1/2 874 (900-2 1/2)	NA		

