

WAAS CH 69623 W27A	APP CRS 270°	Rwy Idg 4271 TDZE 239 Apt Elev 246
--	------------------------	---

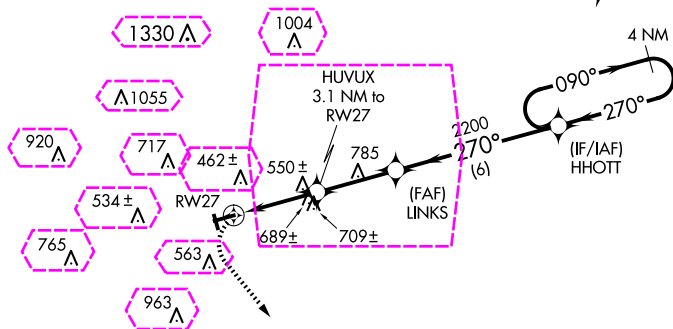
RNAV (GPS) RWY 27
WINDHAM (IJD)

▼ Procedure NA at night. DME/DME RNP-0.3 NA. Rwy 27 helicopter visibility reduction below 1 SM NA. When local altimeter setting not received, use Windsor Locks altimeter setting and increase all MDA 80 feet, increase LP and LNAV Cat B and Circling Cats A/B visibility $\frac{1}{4}$ SM, increase LP, LNAV and Circling Cat C visibility $\frac{1}{2}$ SM.

MISSED APPROACH:
Climbing left turn to
2600 direct ORW
VOR/DME and hold.

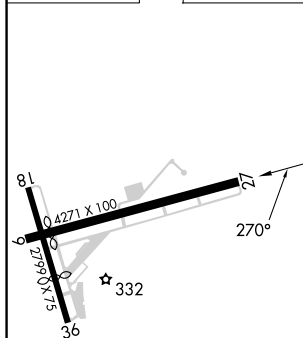
ASOS 133.675	BRADLEY APP CON 127.8 269.325	CLNC DEL 128.6	UNICOM 122.975 (CTAF) 0
-----------------	----------------------------------	-------------------	----------------------------

Procedure NA for arrivals on PUT
VOR/DME airway radials 141 CW 283.

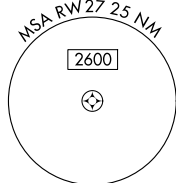
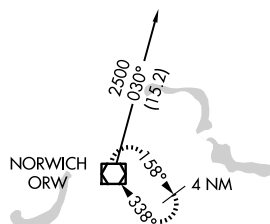


Procedure NA for arrivals on ORW
VOR/DME airway radials 321 CW 082.

ELEV 246		TDZE 239
----------	--	----------



REIL Rwy 27 **L**
MIRL Rwy 9-27 **L**



Visual Segment - Obstacles.

Diagram showing a flight path from RW27 to HHOTT. The path starts at RW27, proceeds 3.1 NM to HUVUX, then 2.9 NM to LINKS, and finally 6 NM to HHOTT. A 4 NM Holding Pattern is shown at HHOTT with a 090° outbound leg and 270° inbound legs. Altitudes are indicated at each point: 1260 at HUVUX, 2200 at LINKS, and 2500 at HHOTT.

CATEGORY	A	B	C	D
LP MDA	940-1 701 (700-1)	940-2 701 (700-2)	NA	
LNAV MDA	960-1 721 (800-1)	960-2 721 (800-2)	NA	
CIRCLING	980-1 734 (800-1)	1120-2½ 874 (900-2½)	NA	

NE-1, 10 JUL 2025 to 07 AUG 2025

NE-1, 10 JUL 2025 to 07 AUG 2025

WILLIMANTIC, CONNECTICUT

AL-5250 (FAA)

25219

WAAS CH 69623 W27A	APP CRS 270°	Rwy Ldg TDZE 239 Apt Elev 246
--	------------------------	---

RNAV (GPS) RWY 27

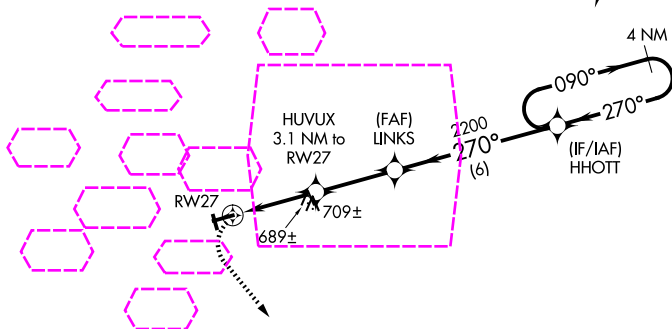
WINDHAM (IJD)

▼ Procedure NA at night. DME/DME RNP-0.3 NA. Rwy 27 helicopter visibility reduction below 1 SM NA. When local altimeter setting not received, use Windsor Locks altimeter setting and increase all MDA 80 feet, increase LP and LNAV Cat B and Circling Cats A/B visibility ¼ SM, increase LP, LNAV and Circling Cat C visibility ½ SM.

MISSED APPROACH:
Climbing left turn to 2600 direct ORW VOR/DME and hold.

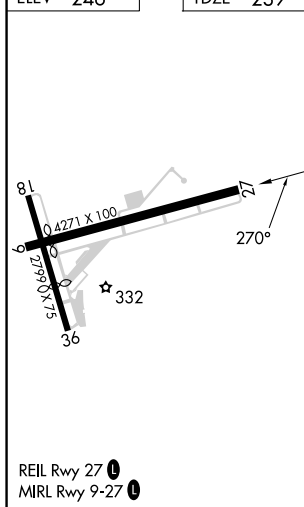
ASOS 133.675	YANKEE APP CON 127.8 269.325	CLNC DEL 128.6	UNICOM 122.975 (CTAF) 0
------------------------	--	--------------------------	--

Procedure NA for arrivals on PUT
VOR/DME airway radials 141 CW 283.

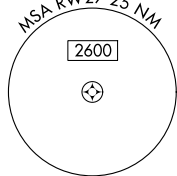


Procedure NA for arrivals on ORW
VOR/DME airway radials 321 CW 082.

ELEV 246	TDZE 239
-----------------	-----------------



NORWICH ORW



2600	ORW	Visual Segment - Obstacles.	HHOTT	4 NM Holding Pattern
		HUVUX 3.1 NM to RWY 27	LINKS	
		RWY 27	2200	
		3.1 NM	2.9 NM	6 NM
CATEGORY	A	B	C	D
LP MDA	940-1 701 (700-1)		940-2 701 (700-2)	NA
LNAV MDA	960-1 721 (800-1)		960-2 721 (800-2)	NA
CIRCLING	980-1 734 (800-1)		1120-2½ 874 (900-2½)	NA

WILLIMANTIC, CONNECTICUT
Amdt 1C 15JUL21

41°45'N-72°11'W

RNAV (GPS) RWY 27

WINDHAM (IJD)

NE-1, 07 AUG 2025 to 04 SEP 2025

NE-1, 07 AUG 2025 to 04 SEP 2025