

SOUTHBRIDGE, MASSACHUSETTS

AL-5242 (FAA)

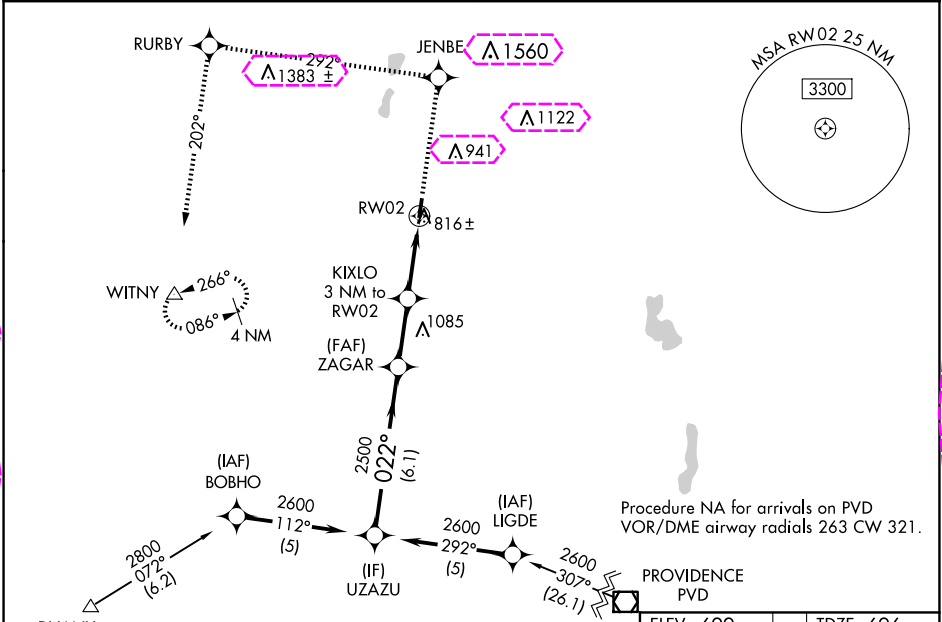
23166

WAAS CH 42616 W02A	APP CRS 022°	Rwy Idg 3501 TDZE 696 Apt Elev 699
--	------------------------	---

RNAV (GPS) RWY 2
SOUTHBRIDGE MUNI (3B0)

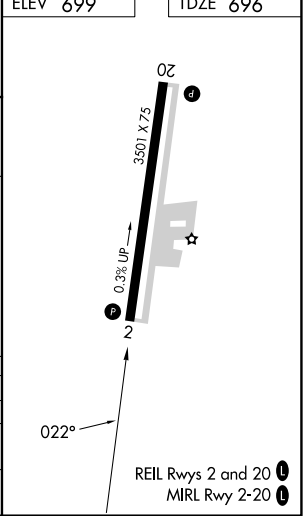
RNP APCH - GPS.	<p>MISSED APPROACH: Climb to 3000 direct JENBE and via track 292° to RURBY and via track 202° to WITNY and hold.</p>
<p>▼ ▲ NA</p> <p>Circling Rwy 20 NA at night. Use Worcester Rgnl altimeter setting, when not received, use Windsor Locks altimeter setting: increase LPV DA to 1090 feet and all visibilities ½ SM. Increase all MDAs 80 feet and LNAV visibility Cat C ¼ SM, and Circling visibility Cat C ½ SM.</p>	

BRADLEY APP CON 119.0 327.1	UNICOM 122.8 (CTAF) 0
--	---------------------------------



ELEV 699	TDZE 696
----------	----------

	3000	JENBE	tr 292°	RURBY	tr 202°	WITNY
UZAZU						
2600						
Procedure Turn NA						
GP 3.00° TCH 40						
	6.1 NM	2.5 NM	3 NM			
CATEGORY	A	B	C	D		
LPV DA	1018-1	322 (400-1)		NA		
LNAV MDA	1300-1 604 (700-1)	1300-1¾ 604 (700-1¾)		NA		
CIRCLING	1360-1 661 (700-1)	1360-1¾ 661 (700-1¾)		NA		



SOUTHBRIDGE, MASSACHUSETTS
Orig-D 26JAN23

42°06'N-72°02'W

SOUTHBRIDGE MUNI (3B0)
RNAV (GPS) RWY 2

NE-1, 10 JUL 2025 to 07 AUG 2025

NE-1, 10 JUL 2025 to 07 AUG 2025

WAAS CH 42616 W02A	APP CRS 022°	Rwy Ldg TDZE Apt Elev	3501 696 699
--	------------------------	-----------------------------	---

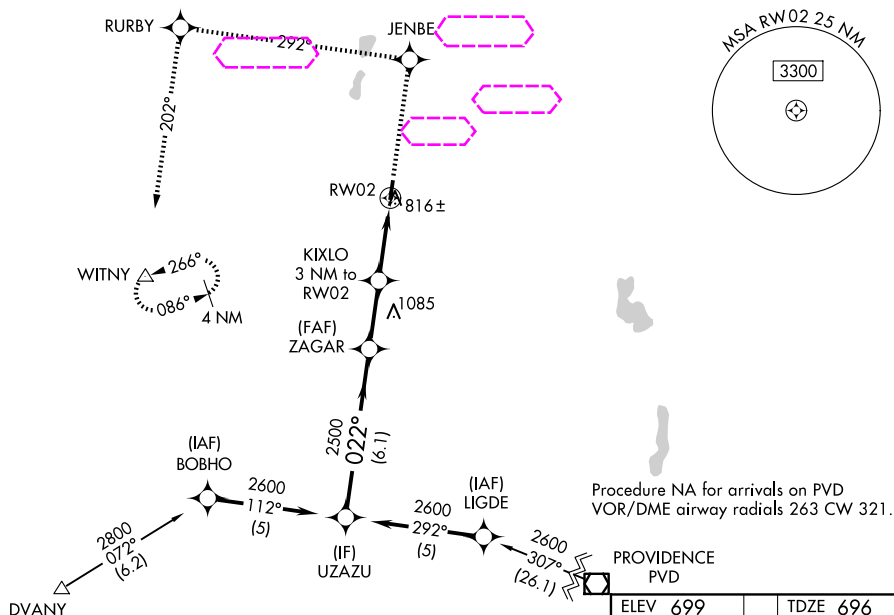
RNAV (GPS) RWY 2

RNP APCH - GPS.

T Circling rwy 20 NA at night. Use Worcester Rgnl alimeter setting, when not received, use Windsor Locks alimeter setting: increase LPV DA to 1090 feet and all visibilities $\frac{1}{8}$ SM. Increase all MDAs 80 feet and LNAV visibility Cat C $\frac{1}{4}$ SM, and Circling visibility Cat C $\frac{1}{2}$ SM.

MISSED APPROACH: Climb to 3000 direct JENBE and via track 292° to RUBY and via track 202° to WITNY and hold.

YANKEE APP CON
119.0 327.1

UNICOM
122.8 (CTAF) **L**

Procedure NA for arrivals at DVANY
on V229 and V1 southwest bound.

Figure 1 illustrates a 1500m (5000ft) RNAV (RNP) 1 approach. The diagram shows a flight path starting from UZAZU, proceeding to ZAGAR, then to KIXLO (3 NM to RW02), and finally to RW02. Key altitudes include 2600, 2500, and 1680. Navigation aids include 3000, JENBE, RUBY, and WITNY. The approach is categorized as LPV DA, LNAV MDA, and CIRCUING. The diagram also shows a 1500m (5000ft) RNAV (RNP) 1 approach with a 1500m (5000ft) RNAV (RNP) 1 approach.

