

MANHATTAN, KANSAS

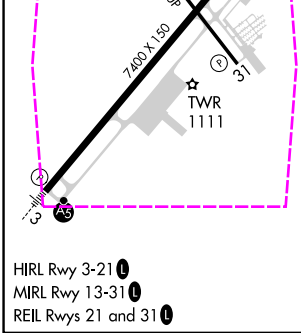
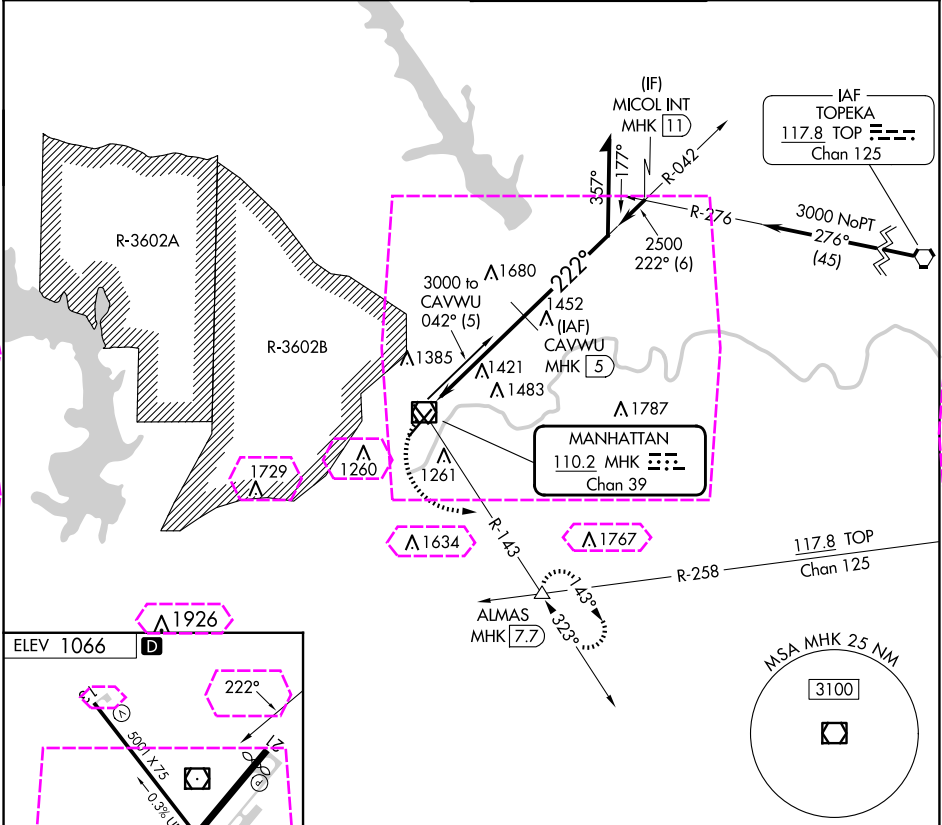
AL-5241 (FAA)

25107

VOR/DME MHK 110.2 Chan 39	APP CRS 222°	Rwy Jdg TDZE App Elev 1066	N/A N/A 1066
---	------------------------	---	---------------------------

VOR-F
MANHATTAN RGNL (MHK)

DME required. DME required. Circling NA northwest of Rwy 3-21.		MISSED APPROACH: Climbing left turn to 3000 on MHK VOR/DME R-143 to ALMAS INT/MHK 7.7 DME and hold.	
ASOS 119.075	MARSHALL AAF GCA* 121.25 269.05	MANHATTAN TOWER* 118.55 (CTAF) 0	GND CON 121.85



3000 MHK R-143		ALMAS △	CAVWU MHK 5		Remain within 10 NM
MHK VOR/DME		042°		3000	
2500		222°		3000	
5 NM		C		D	
CATEGORY	A	B	C	D	
CIRCLING	1680-1	614 (700-1)	1920-2½ 854 (900-2½)	1920-2¾ 854 (900-2¾)	

MANHATTAN, KANSAS
Amdt 2 10AUG23

39°08'N-96°40'W

MANHATTAN RGNL (MHK)
VOR-F

MANHATTAN, KANSAS

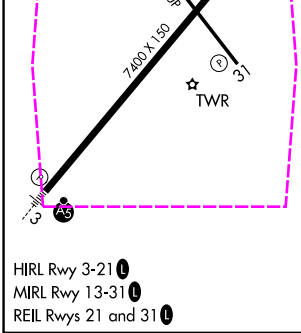
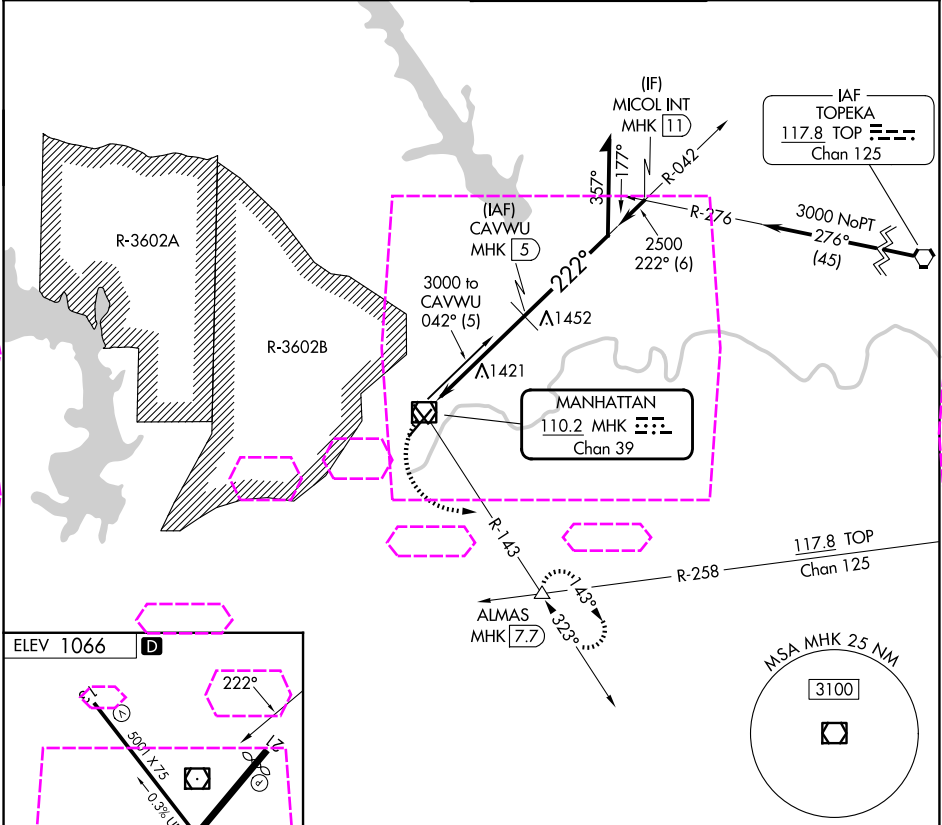
AL-5241 (FAA)

25219

VOR/DME MHK 110.2 Chan 39	APP CRS 222°	Rwy Ldg TDZE App Elev 1066	N/A N/A 1066
---	------------------------	---	---------------------------

VOR-F
MANHATTAN RGNL (MHK)

DME required. ⚠ Circling NA northwest of Rwy 3-21.		MISSED APPROACH: Climbing left turn to 3000 on MHK VOR/DME R-143 to ALMAS INT/MHK 7.7 DME and hold.	
ASOS 119.075	MARSHALL AAF GCA★ 121.25 269.05	MANHATTAN TOWER★ 118.55 (CTAF) 0	GND CON 121.85



<div>3000 MHK R-143</div>		<div>ALMAS △</div>	<div>CAVWU MHK 5</div>		<div>Remain within 10 NM</div>	
<div>MHK VOR/DME</div>		<div>042°</div>		<div>3000</div>		
<div>2500</div>		<div>222°</div>		<div>3000</div>		
<div>5 NM</div>						
CATEGORY	A		B		C	D
CIRCLING	1680-1 614 (700-1)		1920-2½ 854 (900-2½)		1920-2¾ 854 (900-2¾)	

MANHATTAN, KANSAS
Amdt 2 10AUG23

39°08'N-96°40'W

MANHATTAN RGNL (MHK)
VOR-F