

MANHATTAN, KANSAS

AL-5241 (FAA)

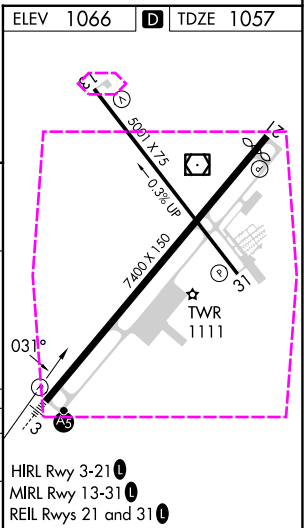
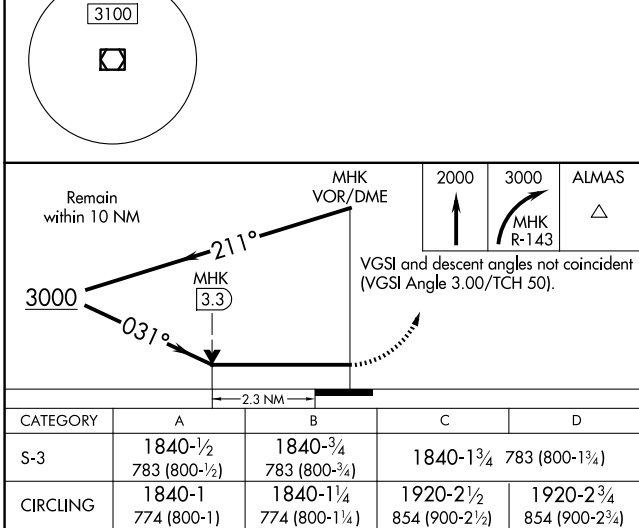
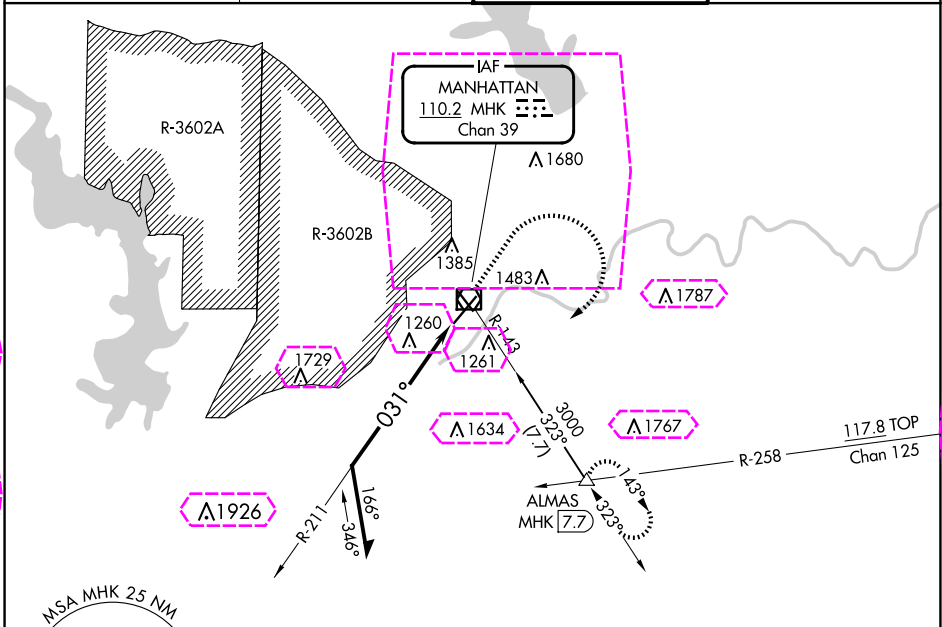
25107

VOR/DME MHK	APP CRS	Rwy Idg	7030
110.2	031°	TDZE	1057
Chan 39		Apt Elev	1066

VOR RWY 3  
MANHATTAN RGNL (MHK)

DME required. Circling NA northwest of Rwy 3-21. For inop ALS, increase S-3 Cats C/D visibility to 2 1/2 SM.	MALSR	MISSED APPROACH: Climb to 2000 then climbing right turn to 3000 on MHK VOR/DME R-143 to ALMAS INT/MHK 7.7 DME and hold.
---	-------	---

ASOS 119.075	MARSHALL AAF GCA* 121.25 269.05	MANHATTAN TOWER* 118.55 (CTAF) 0	GND CON 121.85
-----------------	------------------------------------	-------------------------------------	-------------------



MANHATTAN, KANSAS

AL-5241 (FAA)

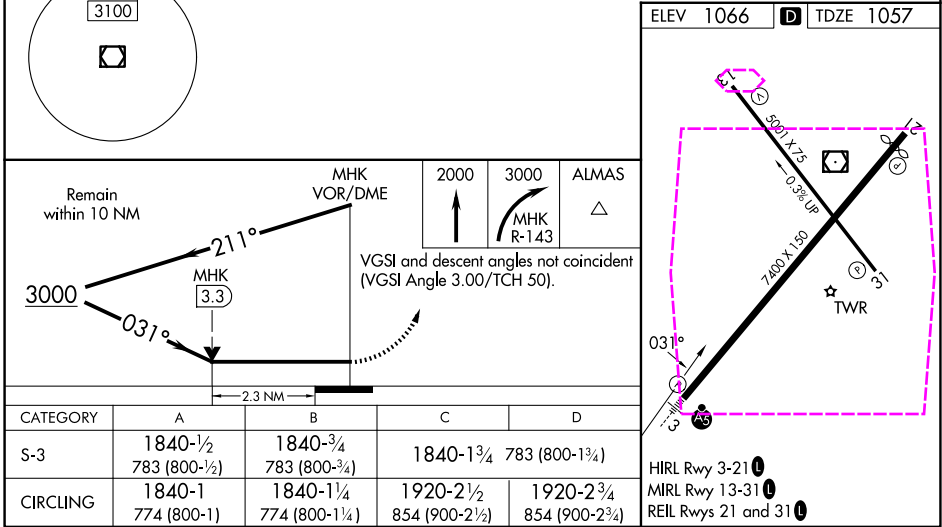
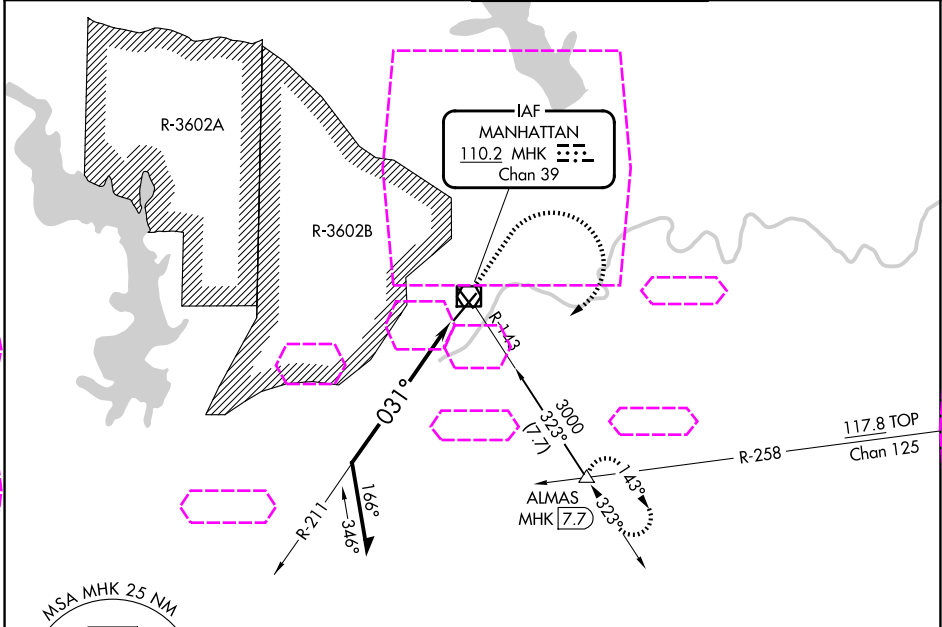
25219

VOR/DME MHK	APP CRS	Rwy Ldg TDZE	7030
110.2	031°	1057	
Chan 39		Apt Elev	1066

VOR RWY 3  
MANHATTAN RGNL (MHK)

DME required.	MALSR	MISSED APPROACH: Climb to 2000 then climbing right turn to 3000 on MHK VOR/DME R-143 to ALMAS INT/MHK 7.7 DME and hold.
⚠ Circling NA northwest of Rwy 3-21. For inop ALS, increase S-3 Cats C/D visibility to 2 1/2 SM.		

ASOS 119.075	MARSHALL AAF GCA ★ 121.25 269.05	MANHATTAN TOWER ★ 118.55 (CTAF) 0	GND CON 121.85
-----------------	-------------------------------------	--------------------------------------	-------------------



MANHATTAN, KANSAS  
Amdt 19 10AUG23

39°08'N-96°40'W

MANHATTAN RGNL (MHK)  
VOR RWY 3

NC-2, 07 AUG 2025 to 04 SEP 2025

NC-2, 07 AUG 2025 to 04 SEP 2025