

WAAS CH 73018 W03A	APP CRS 036°	Rwy Idg 7030 TDZE 1057 Appt Elev 1066
--	------------------------	--

RNAV (GPS) RWY 3
MANHATTAN RGNL (MHK)

RNP APCH - GPS.

V Circling NA northwest of Rwy 3-21. Rwy 3 helicopter visibility reduction below
A ¾ SM NA. Inop table does not apply to LPV all Cats. For uncompensated
Baro-VNAV systems, LNAV/VNAV NA below -20°C or above 54°C. For inop
ALS, increase LNAV/VNAV all Cats visibility to 1 ½ SM, increase LNAV Cats A/B
visibility to 1 SM and LNAV Cats C/D visibility to 1 ½ SM.

MALSR

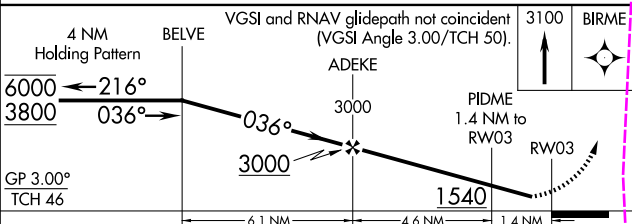
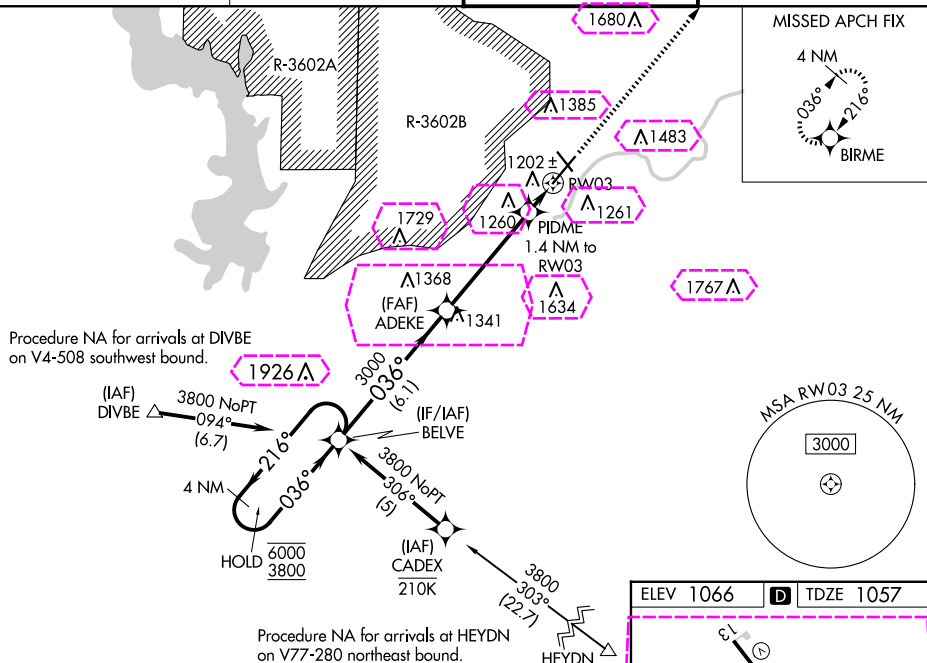
MISSED APPROACH: Climb to 3100 direct BIRME and hold.

ASOS
119.075

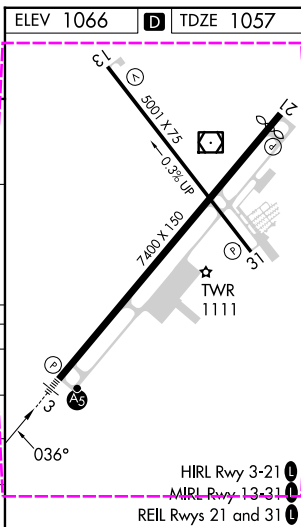
MARSHALL AAF GCA★
121.25 269.05

MANHATTAN TOWER
118.55 (CTAF) **L**

GND CON
121.85



CATEGORY	A	B	C	D
LPV DA	1257-1/2 200 (200-1/2)			
LNAV/ VNAV DA	1441-3/4 384 (400-3/4)			
LNAV MDA	1460-3/4 403 (400-3/4)			
CIRCLING	1540-1 474 (500-1)	1620-1 554 (600-1)	1920-2 1/2 854 (900-2 1/2)	1920-2 3/4 854 (900-2 3/4)



MANHATTAN, KANSAS
Amdt 2 10AUG23

39°08'N-96°40'W

MANHATTAN RGNL (MHK)
RNAV (GPS) RWY 3

NC-2, 10 JUL 2025 to 07 AUG 2025

NC-2, 10 JUL 2025 to 07 AUG 2025

MANHATTAN, KANSAS

AL-5241 (FAA)

25219

WAAS CH 73018 W03A	APP CRS 036°	Rwy Ldg TDZE Apt Elev	7030 1057 1066
--	------------------------	-----------------------------	---

RNAV (GPS) RWY 3

MANHATTAN RGNL (MHK)

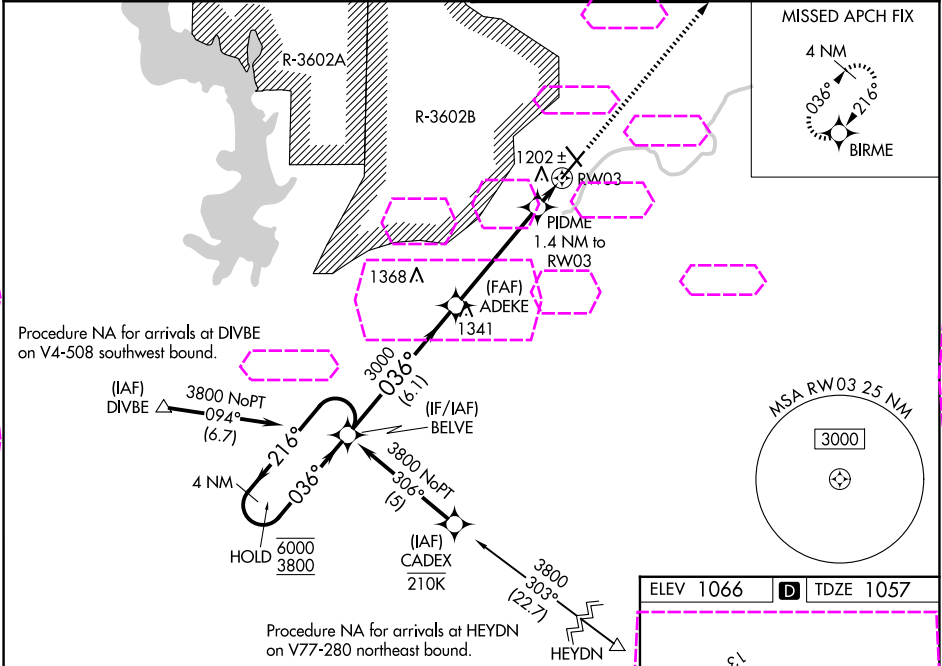
RNP APCH - GPS.

⚠ Circling NA northwest of Rwy 3-21. Rwy 3 helicopter visibility reduction below ¾ SM NA. Inop table does not apply to LPV all Cats. For uncompensated Baro-VNAV systems, LNAV/VNAV NA below -20°C or above 54°C. For inop ALS, increase LNAV/VNAV all Cats visibility to 1 ½ SM, increase LNAV Cats A/B visibility to 1 SM and LNAV Cats C/D visibility to 1 ½ SM.

MALSR

MISSED APPROACH: Climb to 3100 direct BIRME and hold.

ASOS 119.075	MARSHALL AAF GCA* 121.25 269.05	MANHATTAN TOWER* 118.55 (CTAF) 0	GND CON 121.85
------------------------	---	--	--------------------------



4 NM Holding Pattern		VGSI and RNAV glidepath not coincident (VGSI Angle 3.00/TCH 50).		3100 BIRME
6000	3800	216°	036°	036°
GP 3.00° TCH 46		3000	3000	1540
6.1 NM		4.6 NM	1.4 NM	
CATEGORY	A	B	C	D
LPV DA		1257-½	200 (200-½)	
LNAV/VNAV DA		1441-¾	384 (400-¾)	
LNAV MDA		1460-¾	403 (400-¾)	
CIRCLING	1540-1 474 (500-1)	1620-1 554 (600-1)	1920-2½ 854 (900-2½)	1920-2¾ 854 (900-2¾)

