

MANHATTAN, KANSAS

AL-5241 (FAA)

25107

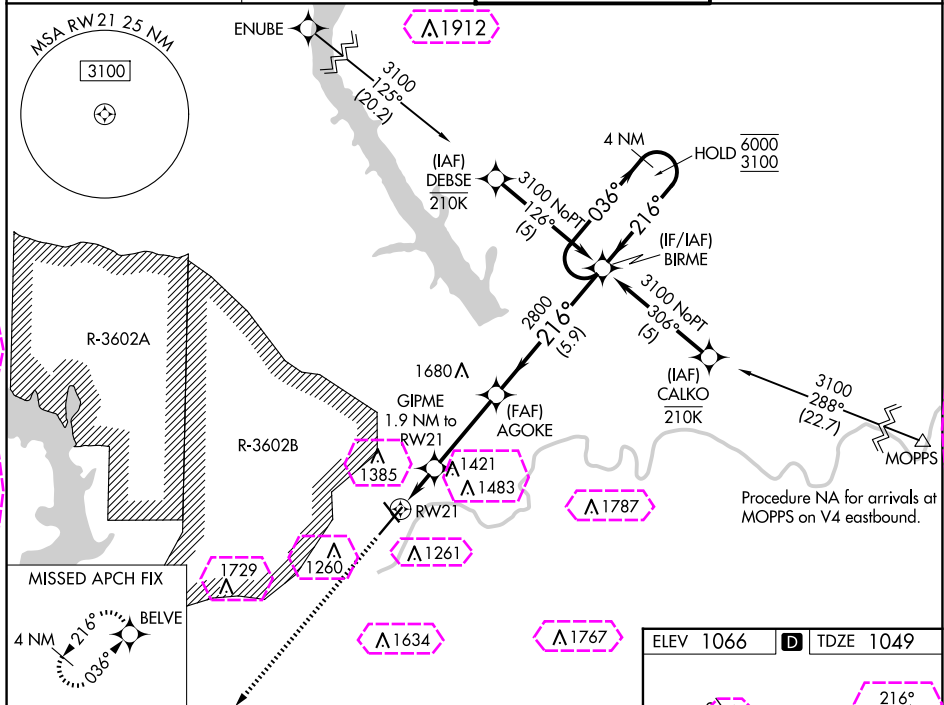
WAAS CH <b>53319</b> <b>W21A</b>	APP CRS <b>216°</b>	Rwy Idg TDZE Apt Elev	<b>7030</b> <b>1049</b> <b>1066</b>
--	------------------------	-----------------------------	---

# RNAV (GPS) RWY 21

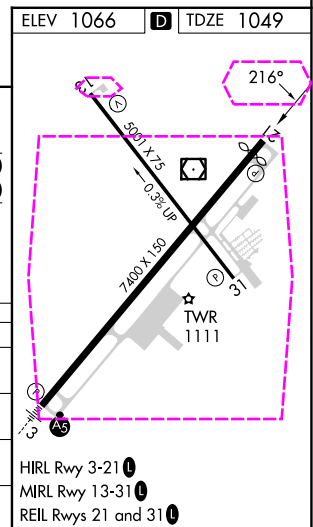
MANHATTAN RGNL (MHK)

RNP APCH - GPS.	MISSED APPROACH: Climb to 3800 direct BELVE and hold.
-----------------	---

ASOS <b>119.075</b>	MARSHALL AAF GCA * <b>121.25 269.05</b>	MANHATTAN TOWER * <b>118.55 (CTAF) 0</b>	GND CON <b>121.85</b>
------------------------	--	---	--------------------------



3800	BELVE	BIRME	4 NM Holding Pattern	6000 3100
↑	✦	AGOKE	2800	GP 3.00° TCH 50
GIPME 1.9 NM to RW21				
RW21				
1680				
1.9 NM 3.5 NM 5.9 NM				
CATEGORY	A	B	C	D
LPV DA	1249-3/4 200 (200-3/4)			
RNAV/VNAV DA	1634-1 3/4 585 (600-1 3/4)			
RNAV MDA	1660-1 611 (600-1)	1660-1 3/4 611 (600-1 3/4)		
CIRCLING	1660-1 594 (600-1)	1920-2 1/2 854 (900-2 1/2)	1920-2 3/4 854 (900-2 3/4)	



MANHATTAN, KANSAS  
Amdt 2 10AUG23

39°08'N-96°40'W

# MANHATTAN RGNL (MHK)

## RNAV (GPS) RWY 21

MANHATTAN, KANSAS

AL-5241 (FAA)

25219

WAAS CH <b>53319</b> <b>W21A</b>	APP CRS <b>216°</b>	Rwy Ldg TDZE Apt Elev	<b>7030</b> <b>1049</b> <b>1066</b>
--	------------------------	-----------------------------	---

# RNAV (GPS) RWY 21

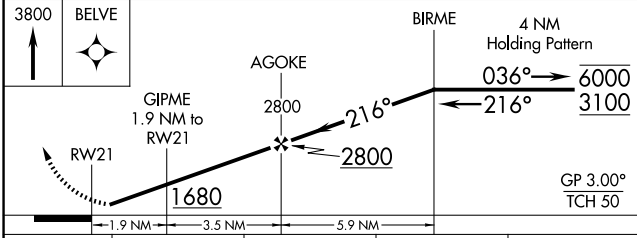
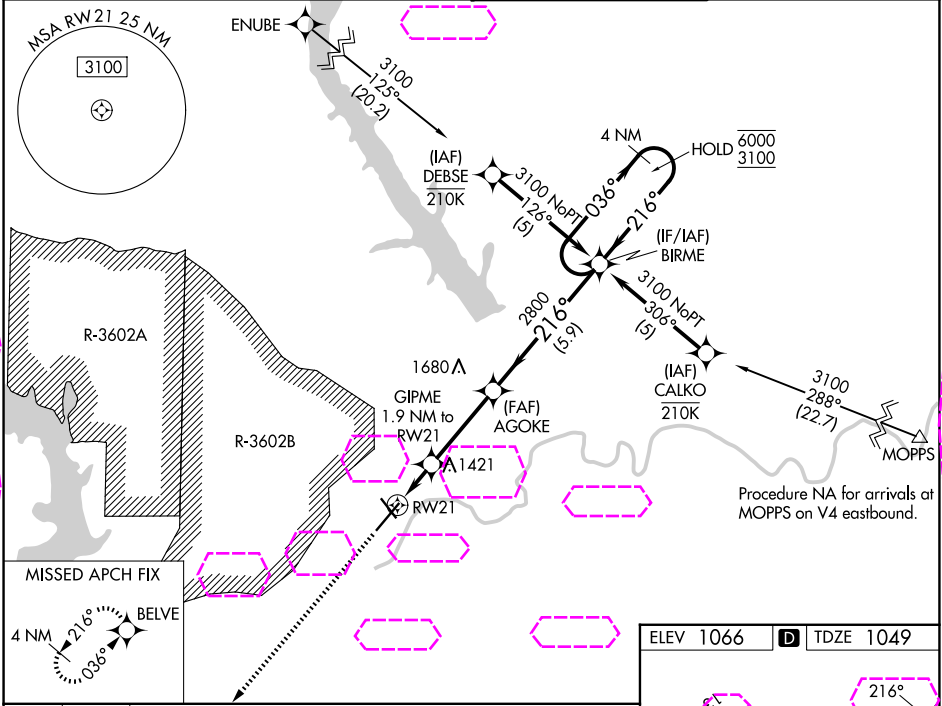
MANHATTAN RGNL (MHK)

**RNP APCH - GPS.**

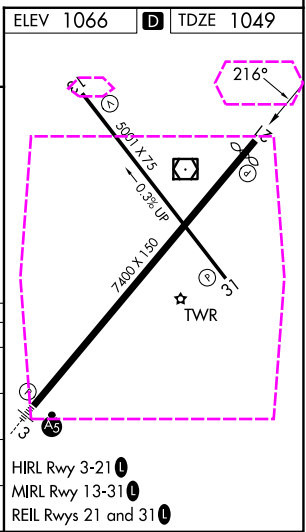
**⚠** Circling NA northwest of Rwy 3-21. Rwy 21 helicopter visibility reduction below  $\frac{3}{4}$  SM NA. For uncompensated Baro-VNAV systems, LNAV/VNAV NA below -20°C or above 54°C.

**MISSED APPROACH:** Climb to 3800 direct BELVE and hold.

ASOS <b>119.075</b>	MARSHALL AAF GCA* <b>121.25 269.05</b>	MANHATTAN TOWER* <b>118.55 (CTAF) 0</b>	GND CON <b>121.85</b>
------------------------	---	--	--------------------------



CATEGORY	A	B	C	D
LPV DA	1249- $\frac{3}{4}$ 200 (200- $\frac{3}{4}$ )			
LNAV/VNAV DA	1634-1 $\frac{3}{4}$ 585 (600-1 $\frac{3}{4}$ )			
LNAV MDA	1660-1 611 (600-1)	1660-1 $\frac{3}{4}$ 611 (600-1 $\frac{3}{4}$ )		
CIRCLING	1660-1 594 (600-1)	1920-2 $\frac{1}{2}$ 854 (900-2 $\frac{1}{2}$ )	1920-2 $\frac{3}{4}$ 854 (900-2 $\frac{3}{4}$ )	



MANHATTAN, KANSAS  
Amdt 2 10AUG23

39°08'N-96°40'W

MANHATTAN RGNL (MHK)  
**RNAV (GPS) RWY 21**

NC-2, 07 AUG 2025 to 04 SEP 2025

NC-2, 07 AUG 2025 to 04 SEP 2025