

MANHATTAN, KANSAS

AL-5241 (FAA)

25107

LOC I-MHK 111.3	APP CRS 036°	Rwy Idg 7030 TDZE 1057 Apt Elev 1066
---------------------------	------------------------	---

ILS or LOC RWY 3

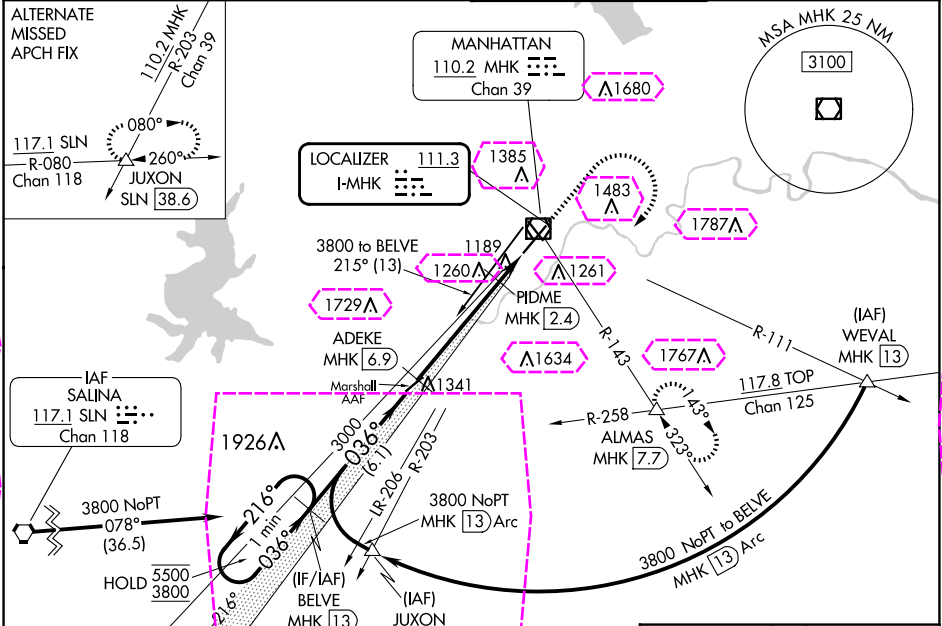
MANHATTAN RGNL (MHK)

DME required.

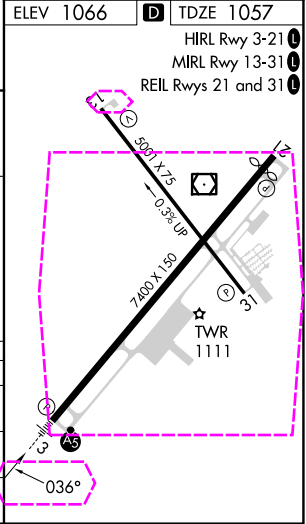
MALSRL

MISSED APPROACH: Climb to 2200 then climbing right turn to 3000 on MHK VOR/DME R-143 to ALMAS INT/MHK 7.7 DME and hold.

ASOS 119.075	MARSHALL AAF GCA★ 121.25 269.05	MANHATTAN TOWER★ 118.55 (CTAF) 0	GND CON 121.85
------------------------	---	--	--------------------------



VGSIs and ILS glidepath not coincident (VGSi Angle 3.00/TCH 50).				
One Minute Holding Pattern				
BELVE MHK [13]				
5500 ← 216° 3800 036° →				
GS 3.00° TCH 46				
ADEKE MHK [6.9]				
3000				
PIDME MHK [2.4]				
MHK [1]				
1540				
6.1 NM 4.6 NM 1.4 NM				
CATEGORY	A	B	C	D
S-ILS 3	1257-½ 200 (200-½)			
S-LOC 3	1440-½	383 (400-½)	1440-⅝	383 (400-⅝)
CIRCLING	1540-1 474 (500-1)	1620-1 554 (600-1)	1920-2½ 854 (900-2½)	1920-2¾ 854 (900-2¾)



MANHATTAN, KANSAS
Amdt 8A 30NOV23

39°08'N-96°40'W

MANHATTAN RGNL (MHK)
ILS or LOC RWY 3

NC-2, 10 JUL 2025 to 07 AUG 2025

NC-2, 10 JUL 2025 to 07 AUG 2025

MANHATTAN, KANSAS

AL-5241 (FAA)

25219

LOC I-MHK 111.3	APP CRS 036°	Rwy Ldg TDZE Apt Elev 7030 1057 1066
---------------------------	------------------------	--

ILS or LOC RWY 3
MANHATTAN RGNL (MHK)

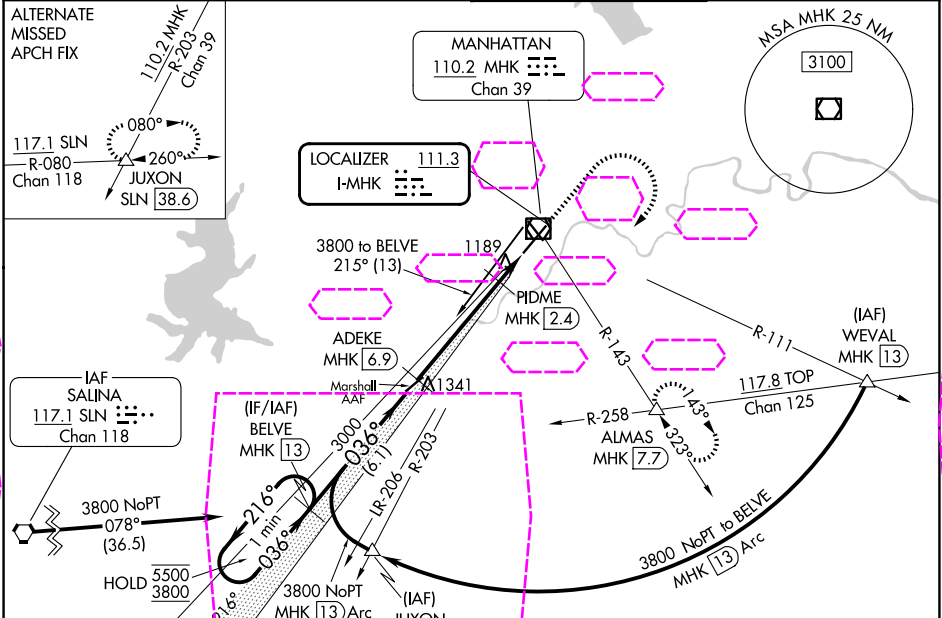
DME required.

⚠ Circling NA northwest of 3-21. Autopilot coupled approach NA below 1350. Inop table does not apply. DME from MHK VOR/DME.

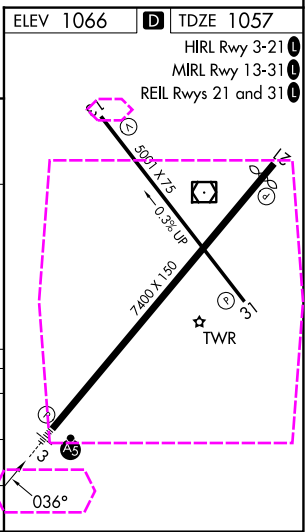
MALSRL

MISSED APPROACH: Climb to 2200 then climbing right turn to 3000 on MHK VOR/DME R-143 to ALMAS INT/MHK 7.7 DME and hold.

ASOS 119.075	MARSHALL AAF GCA★ 121.25 269.05	MANHATTAN TOWER★ 118.55 (CTAF) 0	GND CON 121.85
------------------------	---	--	--------------------------



VGSIL and ILS glidepath not coincident (VGSIL Angle 3.00/TCH 50).				
One Minute Holding Pattern				
5500 ← 216° 3800 → 036°				
GS 3.00° TCH 46				
BELVE MHK 13				
ADEKE MHK 6.9				
PIDME MHK 2.4				
MHK 1				
1540				
6.1 NM 4.6 NM 1.4 NM				
CATEGORY	A	B	C	D
S-ILS 3	1257-1/2 200 (200-1/2)			
S-LOC 3	1440-1/2	383 (400-1/2)	1440-5/8	383 (400-5/8)
CIRCLING	1540-1 474 (500-1)	1620-1 554 (600-1)	1920-2 1/2 854 (900-2 1/2)	1920-2 3/4 854 (900-2 3/4)



MANHATTAN, KANSAS
Amdt 8A 30NOV23

39°08'N-96°40'W

MANHATTAN RGNL (MHK)
ILS or LOC RWY 3

NC-2, 07 AUG 2025 to 04 SEP 2025

NC-2, 07 AUG 2025 to 04 SEP 2025