

LA VERNE, CALIFORNIA

AL-5218 (FAA)

25051

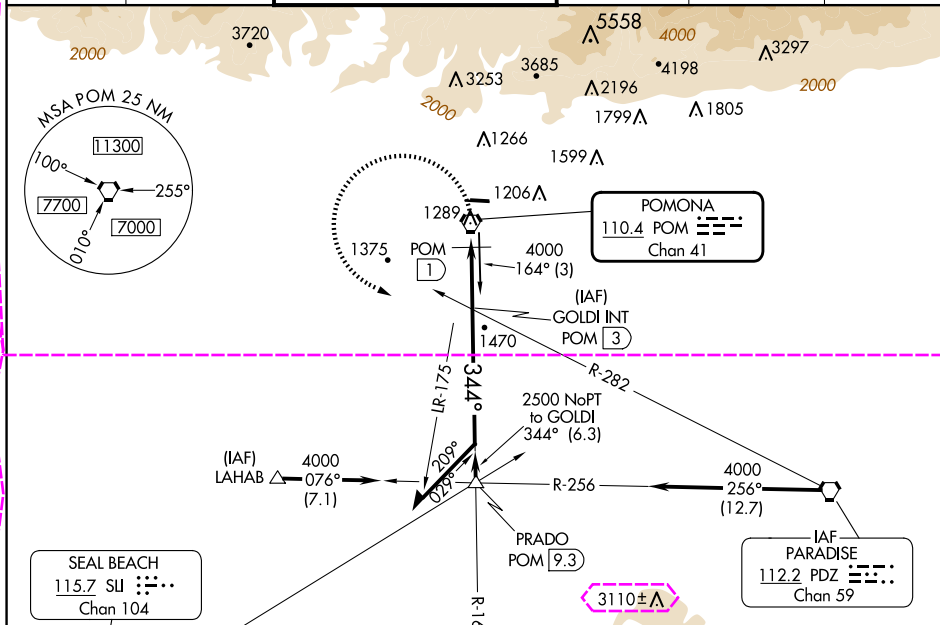
VORTAC POM 110.4 Chan 41	APP CRS 344°	Rwy Idg TDZE Apt Elev N/A N/A 1014
---------------------------------------	------------------------	--

VOR or GPS-A BRACKETT FLD (POC)

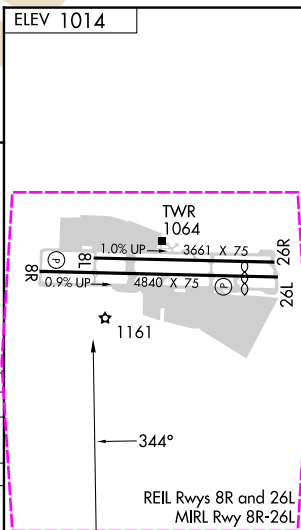
When local altimeter setting not received, use Ontario Intl altimeter setting and increase all MDA 40 feet and visibility Cat C ¼ mile. Night landing: Rwy 8L NA, Rwy 8R operational VGSI required, remain on or above VGSI glidepath until threshold. Helicopter visibility reduction below 1 SM not authorized. Circling NA for Cat C north of Rwy 8L-26R

MISSED APPROACH: Climbing left turn to 4000 via POM R-164 to PRADO INT.

ATIS 124.4	SOCAL APP CON 125.5 349.0	BRACKETT TOWER★ RWY 8R/26L 118.2 (CTAF)	RWY 8L/26R 133.3	GND CON 125.0	CLNC DEL 121.875	UNICOM 122.95
----------------------	-------------------------------------	--	----------------------------	-------------------------	----------------------------	-------------------------



PRADO POM R-164 POM VORTAC POM 1 1800 2500 164° 344° 4000 1800 2500 164° 344° 4000				GOLDI INT POM 3 Remain within 10 NM 164° 344° 4000 1800 2500 164° 344° 4000			
CATEGORY				DME MINIMUMS			
C CIRCLING				C CIRCLING			
1800-1 786 (800-1)				1680-1 666 (700-1)			
1800-1¼ 786 (800-1¼)				1760-2¼ 746 (800-2¼)			
1800-2¼ 786 (800-2¼)				NA			
NA				NA			



LA VERNE, CALIFORNIA
Amdt 5E 27FEB20

34°06'N-117°47'W

BRACKETT FLD (POC)
VOR or GPS-A

SW-3, 10 JUL 2025 to 07 AUG 2025

SW-3, 10 JUL 2025 to 07 AUG 2025

BRACKETT FLD (POC)
VOR or GPS-A

SW-3, 07 AUG 2025 to 04 SEP 2025