

LA VERNE, CALIFORNIA

AL-5218 (FAA)

25051

WAAS CH 70624 W26A	APP CRS 259°	Rwy Idg 4151 TDZE 1005 Apt Elev 1014
--	------------------------	---

RNAV (GPS) RWY 26L

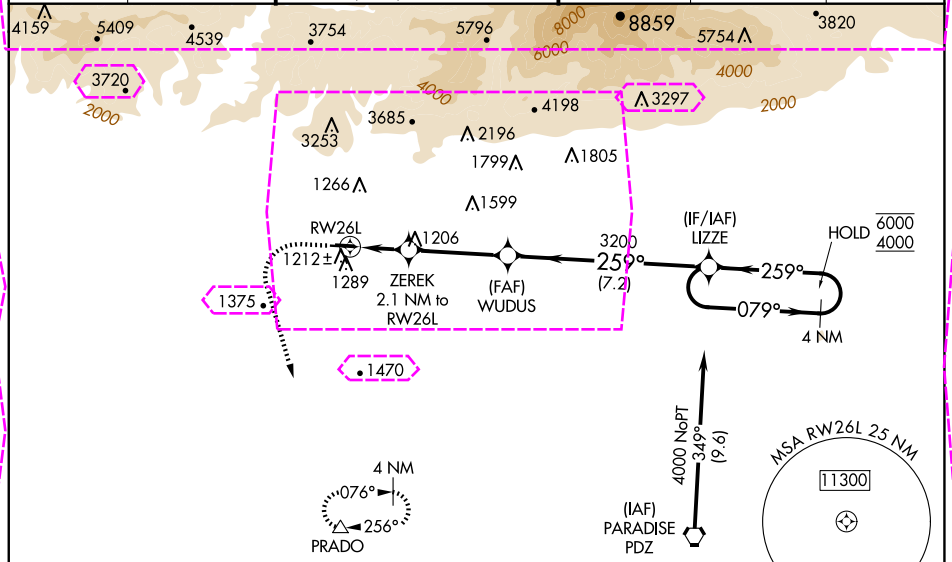
BRACKETT FLD (POC)

RNP APCH.

Baro-VNAV and VDP NA when using Ontario altimeter setting. Rwy 26L helicopter visibility reduction below 3/4 SM NA. For uncompensated Baro-VNAV systems, LNAV/VNAV NA below -17°C or above 54°C. When local altimeter setting not received, use Ontario Intl altimeter setting and increase all DA 32 feet and all MDA 40 feet, increase LPV and LNAV/VNAV all Cats visibility 1/8 SM. Circling NA for Cat C north of Rwy 8L-26R. Circling to Rwy 8L NA at night. When Circling to Rwy 8R at night, operational VGSI required, remain on or above VGSI glidepath until threshold.

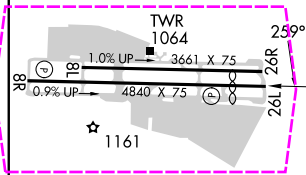
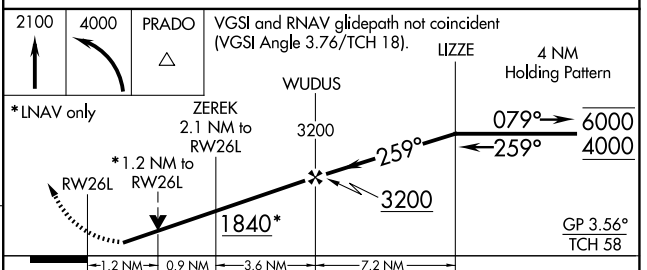
MISSED APPROACH:
Climb to 2100 then climbing left turn to 4000 direct PRADO and hold.

ATIS 124.4	SOCAL APP CON 125.5 349.0	BRACKETT TOWER★ RWY 8R/26L 118.2 (CTAF) RWY 8L/26R 133.3	GND CON 125.0	CLNC DEL 121.875	UNICOM 122.95
----------------------	-------------------------------------	--	-------------------------	----------------------------	-------------------------



ELEV 1014	TDZE 1005
------------------	------------------

Procedure NA for arrivals on PDZ VORTAC
airway radials 278 CW 078.



CATEGORY	A	B	C	D
LPV DA	1305-7/8	300 (300-7/8)		NA
LNAV/VNAV DA	1444-1 1/4	439 (500-1 1/4)		NA
LNAV MDA	1500-1	495 (500-1)	1500-1 3/8 495 (500-1 3/8)	NA
CIRCLING	1680-1	666 (700-1)	1760-2 1/4 746 (800-2 1/4)	NA

LA VERNE, CALIFORNIA
Amdt 1 03JAN19

34°06'N-117°47'W

RNAV (GPS) RWY 26L

SW-3, 10 JUL 2025 to 07 AUG 2025

SW-3, 10 JUL 2025 to 07 AUG 2025

LA VERNE, CALIFORNIA

AL-5218 (FAA)

25219

WAAS CH 70624 W26A	APP CRS 259°	Rwy Ldg TDZE 1005 Apt Elev 1014
--	------------------------	---

RNAV (GPS) RWY 26L

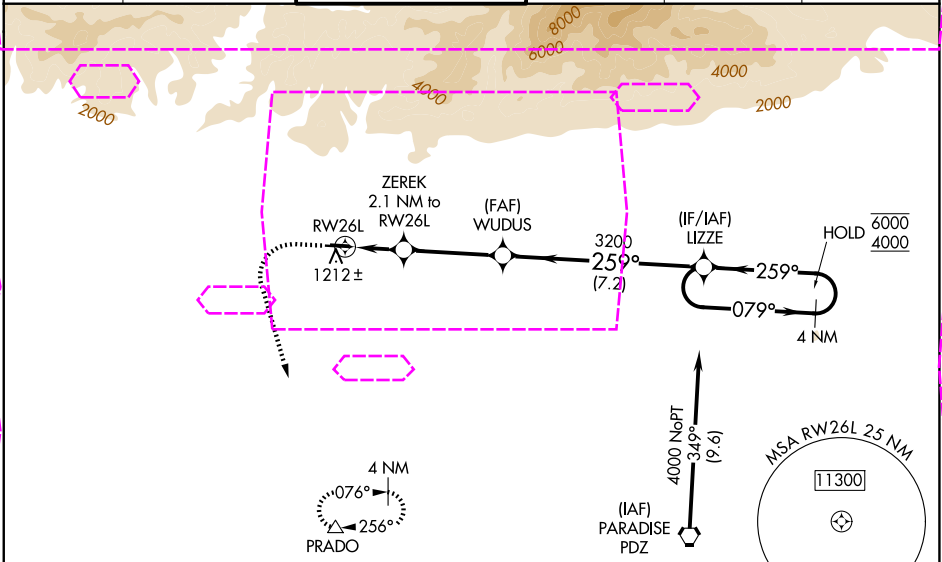
BRACKETT FLD (POC)

RNP APCH.

Baro-VNAV and VDP NA when using Ontario altimeter setting. Rwy 26L helicopter visibility reduction below 3/4 SM NA. For uncompensated Baro-VNAV systems, LNAV/VNAV NA below -17°C or above 54°C. When local altimeter setting not received, use Ontario Intl altimeter setting and increase all DA 32 feet and all MDA 40 feet, increase LPV and LNAV/VNAV all Cats visibility 1/8 SM. Circling NA for Cat C north of Rwy 8L-26R. Circling to Rwy 8L NA at night. When Circling to Rwy 8R at night, operational VGSI required, remain on or above VGSI glidepath until threshold.

MISSED APPROACH:
Climb to 2100 then climbing left turn to 4000 direct PRADO and hold.

D-ATIS 124.4	SOCAL APP CON 125.5 349.0	BRACKETT TOWER★ 118.2 (CTAF) (8R/26L) 133.3 (8L/26R)	GND CON 125.0	CLNC DEL 121.875	UNICOM 122.95
------------------------	-------------------------------------	--	-------------------------	----------------------------	-------------------------



ELEV 1014	TDZE 1005
------------------	------------------

Procedure NA for arrivals on PDZ VORTAC
airway radials 278 CW 078.

2100
4000
PRADO

VGSI and RNAV glidepath not coincident
(VGSI Angle 3.76/TCH 18).

LIZZE
4 NM
Holding Pattern

*LNAV only

ZEREK 2.1 NM to RWY 26L

1840*

1.2 NM 0.9 NM 3.6 NM 7.2 NM

TWR

1.0% UP 3661 X 75

0.9% UP 4840 X 75

259°

261

26R

8R

☆

REIL Rwy 8R and 26L

MIRL Rwy 8R-26L

CATEGORY	A	B	C	D
LPV DA	1305-7/8	300 (300-7/8)		NA
LNAV/ VNAV DA	1444-1 1/4	439 (500-1 1/4)		NA
LNAV MDA	1500-1	495 (500-1)	1500-1 3/8 495 (500-1 3/8)	NA
CIRCLING	1680-1	666 (700-1)	1760-2 1/4 746 (800-2 1/4)	NA

LA VERNE, CALIFORNIA

Amdt 1 03JAN19

34°06'N-117°47'W

BRACKETT FLD (POC)

RNAV (GPS) RWY 26L

SW-3, 07 AUG 2025 to 04 SEP 2025

SW-3, 07 AUG 2025 to 04 SEP 2025