

LA VERNE, CALIFORNIA

AL-5218 (FAA)

25051

LOC	I-POC	APP CRS	Rwy Idg	4151
110.5		259°	TDZE	1005
			Apt Elev	1014

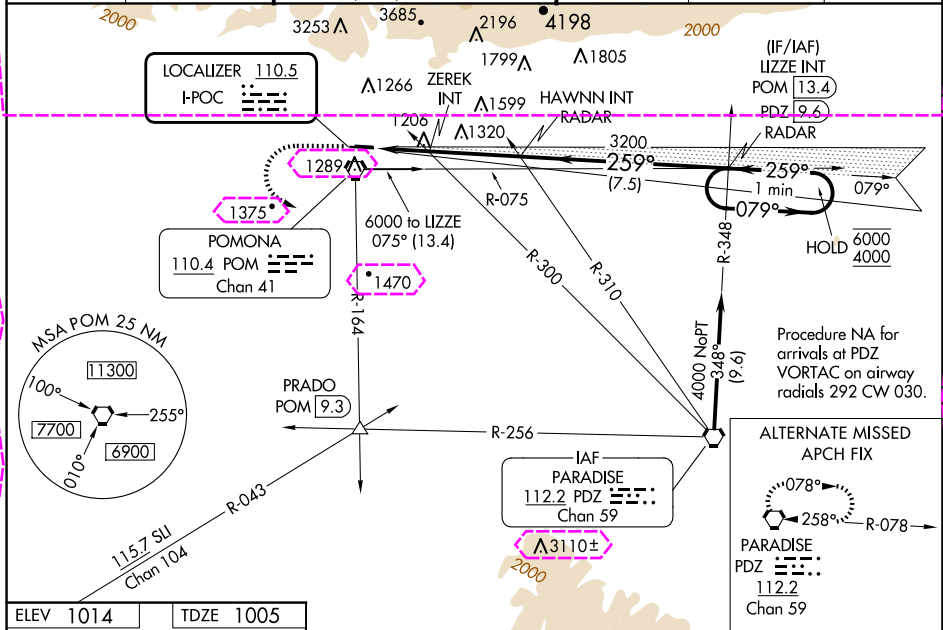
# LOC RWY 26L

BRACKETT FLD (POC)

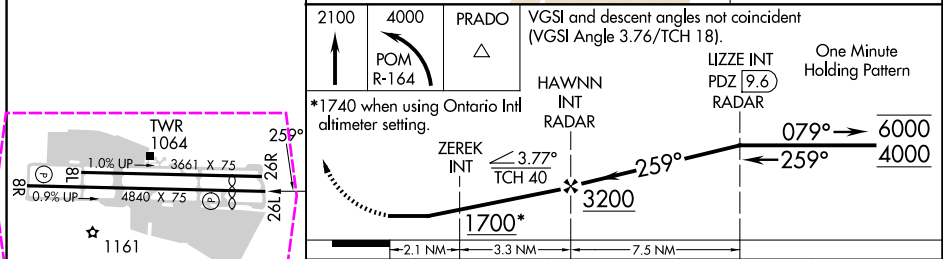
**⚠** Circling to Rwy 8L NA at night. Circling NA for Cat C north of Rwy 8L-26R. When Circling to Rwy 8R at night, operational VGSI required, remain on or above VGSI glidepath until threshold. Rwy 26L helicopter visibility reduction below  $\frac{3}{4}$  SM NA. When local altimeter setting not received, use Ontario Intl altimeter setting and increase all MDAs 40 feet.

**MISSED APPROACH:** Climb to 2100 then climbing left turn to 4000 on POM VORTAC R-164 to PRADO INT/POM 9.3 DME and hold.

ATIS	SOCAL APP CON	BRACKETT TOWER★	GND CON	CLNC DEL	UNICOM
124.4	125.5 349.0	RWY 8R/26L 118.2 (CTAF) RWY 8L/26R 133.3	125.0	121.875	122.95



ELEV	1014	TDZE	1005
------	------	------	------



REIL Rws 8R and 26L MIRL Rwy 8R-26L	FAF to MAP 5.4 NM	Knots	60	90	120	150	180
		Min:Sec	5:24	3:36	2:42	2:10	1:48
		CIRCLING	1700-1	695 (700-1)	1700-2	695 (700-2)	NA
		CIRCLING	1700-1	686 (700-1)	1760-2 1/4	746 (800-2 1/4)	NA
		ZEREK MINIMUMS (DUAL VOR RECEIVERS REQUIRED)					
		S-LOC 26L	1460-1	455 (500-1)	1460-1 3/8	455 (500-1 3/8)	NA
		CIRCLING	1680-1	666 (700-1)	1760-2 1/4	746 (800-2 1/4)	NA

LA VERNE, CALIFORNIA

Amdt 1 03JAN19

34°06'N-117°47'W

# BRACKETT FLD (POC)

# LOC RWY 26L

BRACKETT FLD (POC)  
LOC RWY 26L

SW-3, 07 AUG 2025 to 04 SEP 2025