

LA VERNE, CALIFORNIA

AL-5218 (FAA)

25051

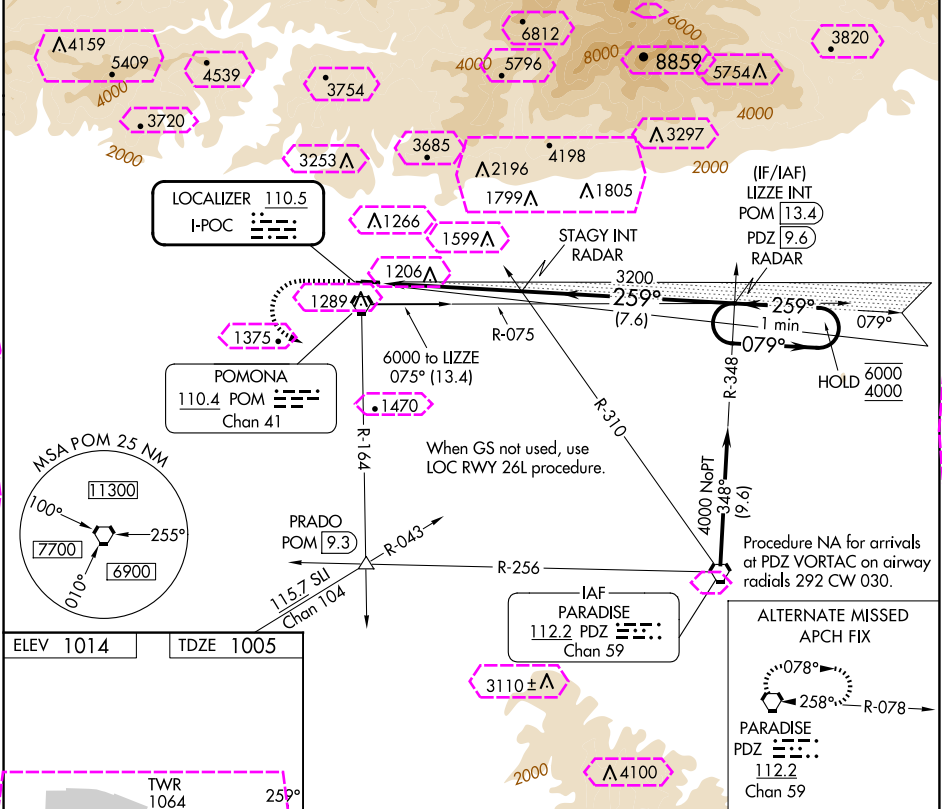
LOC I-POC 110.5	APP CRS 259°	Rwy Idg TDZE Apt Elev 4151 1005 1014
---------------------------	------------------------	--

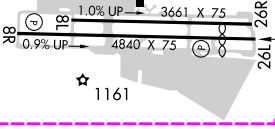
ILS RWY 26L
BRACKETT FLD (POC)

⚠ Rwy 26L helicopter visibility reduction below $\frac{3}{4}$ SM NA.
⚠ When local altimeter setting not received, use Ontario Intl altimeter setting and increase DA to 1364.

MISSED APPROACH: Climb to 2100 then climbing left turn to 4000 on POM VORTAC R-164 to PRADO INT/POM 9.3 DME.

ATIS 124.4	SOCAL APP CON 125.5 349.0	BRACKETT TOWER★ RWY 8R/26L 118.2 (CTAF) RWY 8L/26R 133.3	GND CON 125.0	CLNC DEL 121.875	UNICOM 122.95
----------------------	-------------------------------------	--	-------------------------	----------------------------	-------------------------



	<div><div><div><div><div>2100</div><div>↑</div></div><div><div>4000</div><div>POM</div><div>R-164</div></div></div><div><div>PRADO</div><div>△</div></div></div><div>VGSI and ILS glidepath not coincident (VGSI Angle 3.76/TCH 18).</div><div><div>LIZZE INT</div><div>PDZ 9.6</div><div>RADAR</div></div><div>One Minute Holding Pattern</div></div>										
	<div><div>STAGY INT RADAR</div><div><div>3200</div><div>259°</div><div>079°→</div><div>←259°</div><div>6000</div><div>4000</div></div><div>* at DTHR; 60 at Rwy end. GS 3.92% * TCH 20</div></div>										
	<div><div>5.2 NM</div><div>7.6 NM</div></div>										
REIL Rwys 8R and 26L MIRL Rwy 8R-26L	<table><tr><th>CATEGORY</th><th>A</th><th>B</th><th>C</th><th>D</th></tr><tr><td>S-ILS 26L</td><td colspan="2">1332-1 327 (400-1)</td><td colspan="2">NA</td></tr></table>	CATEGORY	A	B	C	D	S-ILS 26L	1332-1 327 (400-1)		NA	
CATEGORY	A	B	C	D							
S-ILS 26L	1332-1 327 (400-1)		NA								

LA VERNE, CALIFORNIA
Amdt 4 03JAN19

34°06'N-117°47'W

BRACKETT FLD (POC)
ILS RWY 26L


SW-3, 10 JUL 2025 to 07 AUG 2025

SW-3, 10 JUL 2025 to 07 AUG 2025

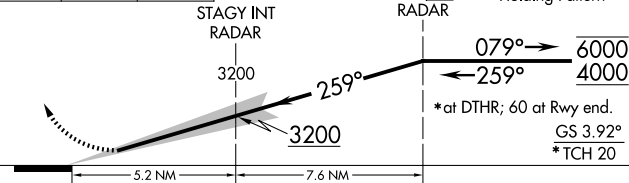
ILS RWY 26L
BRACKETT FLD (POC)

MISSED APPROACH: Climb to 2100 then climbing left turn to 4000 on POM VORTAC R-164 to PRADO INT/POM 9.3 DME.

UNICOM
122.95

PARADISE
PDZ 
112.2
Chan 59

LIZZE INT
PDZ 9.6



CATEGORY	A	B	C	D
S-ILS 26L	1332-1	327 (400-1)	NA	

SW-3, 07 AUG 2025 to 04 SEP 2025