

APPLETON, WISCONSIN

AL-5216 (FAA)

23362

WAAS CH 56223 W03A	APP CRS 028°	Rwy Idg 8003 TDZE 888 Apt Elev 918
--	------------------------	---

RNAV (GPS) RWY 3

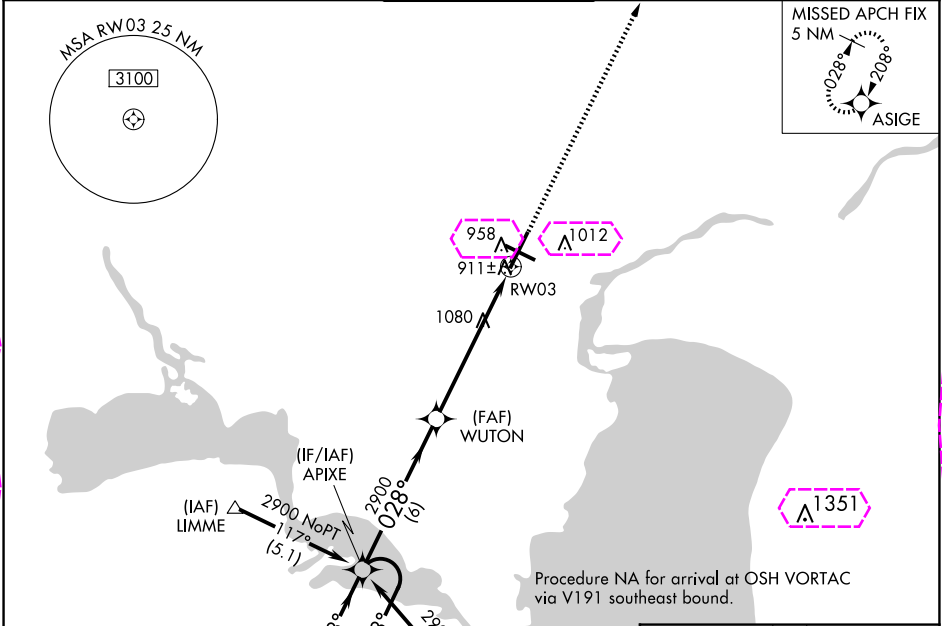
APPLETON INTL (ATW)

⚠ Baro-VNAV NA below -16°C (4°F). DME/DME RNP-0.3 NA. When local altimeter setting not received use Green Bay-Austin Straubel Intl altimeter setting and increase all DAs/MDAs 100 feet. Baro/VNAV and VDP NA when using Green Bay-Austin Straubel Intl altimeter setting. For inoperative MALSR increase LPV visibility to RVR 4000 all Cats.

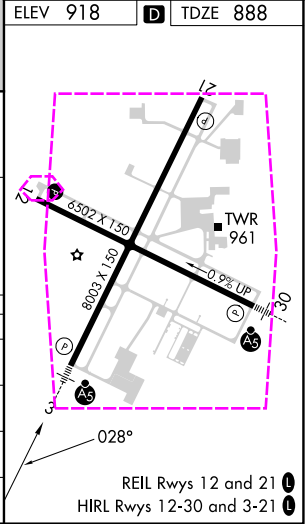
MALSR

MISSED APPROACH: Climb to 2700 direct ASIGE and hold.

ATIS 127.15	GREEN BAY APP CON★ 126.3 338.2	APPLETON TOWER★ 119.6 (CTAF) 0	GND CON 121.7	UNICOM 122.95
-----------------------	--	--	-------------------------	-------------------------



4 NM Holding Pattern					2700	ASIGE
GP 3.00° TCH 47					*1.5 NM to RW03	
6 NM					*LNAV only	
CATEGORY					RW03	
LPV DA					2900	
LNAV/VNAV DA					2900	
LNAV MDA					2900	
CIRCLING					2900	



APPLETON, WISCONSIN
Amdt 1B 26MAR20

44°15'N-88°31'W

APPLETON INTL (ATW)
RNAV (GPS) RWY 3

EC-3, 10 JUL 2025 to 07 AUG 2025

EC-3, 10 JUL 2025 to 07 AUG 2025

APPLETON, WISCONSIN

AL-5216 (FAA)

25219


WAAS CH 56223 W03A	APP CRS 028°	Rwy Ldg 8002 TDZE 888 Apt Elev 918
--	------------------------	---

RNAV (GPS) RWY 3

APPLETON INTL (ATW)

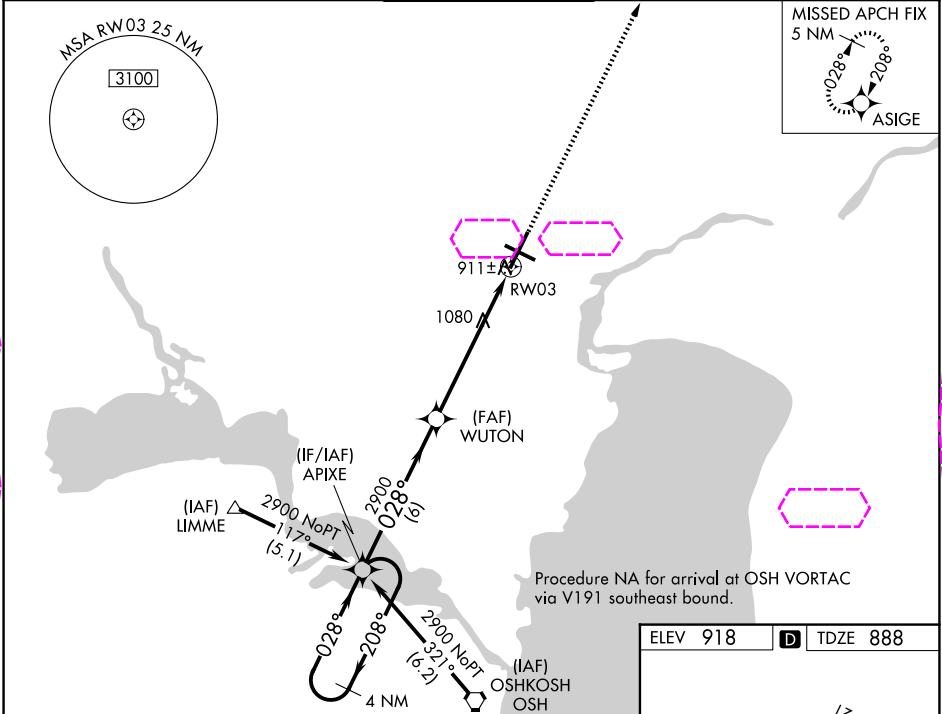
⚠ Baro-VNAV NA below -16°C (4°F). DME/DME RNP-0.3 NA. When local altimeter setting not received use Green Bay-Austin Straubel Intl altimeter setting and increase all DAs/MDAs 100 feet. Baro/VNAV and VDP NA when using Green Bay-Austin Straubel Intl altimeter setting. For inoperative MALSR increase LPV visibility to RVR 4000 all Cats.

MALSR

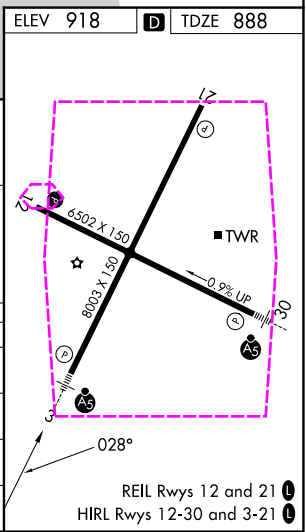


MISSED APPROACH:
Climb to 2700 direct ASIGE and hold.

ATIS 127.15	GREEN BAY APP CON★ 126.3 338.2	APPLETON TOWER★ 119.6 (CTAF) 0	GND CON 121.7	UNICOM 122.95
-----------------------	--	--	-------------------------	-------------------------



4 NM Holding Pattern		APIXE	WUTON	2700	ASIGE
2900 ← 208°		028° →	2900	*1.5 NM to RW03	
GP 3.00°				*LNAV only	
TCH 47					
		6 NM	4.6 NM	1.5 NM	
CATEGORY	A	B	C	D	
LPV DA	1138/24		250 (300-½)		
LNAV/VNAV DA	1232/40		344 (400-¾)		
LNAV MDA	1400/24	512 (500-½)	1400/50 512 (500-1)	1400/60 512 (500-¼)	
CIRCLING	1400-1	482 (500-1)	1400-1½ 482 (500-½)	1480-2 562 (600-2)	



APPLETON, WISCONSIN
Amdt 1B 26MAR20

44°15'N-88°31'W

APPLETON INTL (ATW)
RNAV (GPS) RWY 3

EC-3, 07 AUG 2025 to 04 SEP 2025

EC-3, 07 AUG 2025 to 04 SEP 2025