

APPLETON, WISCONSIN

AL-5216 (FAA)

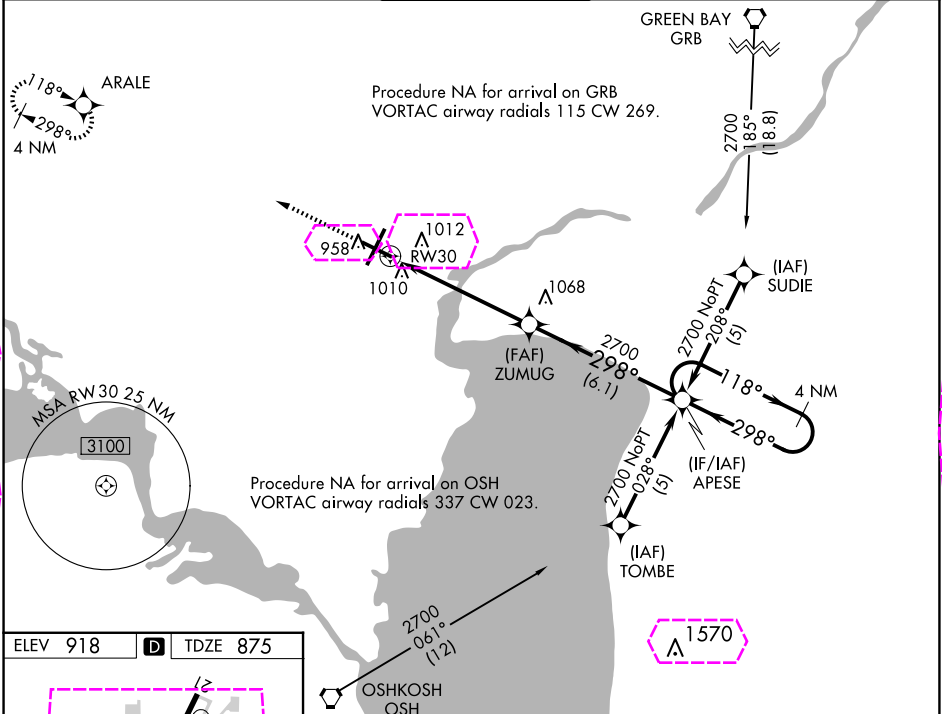
23362

WAAS CH <b>42517</b> <b>W30A</b>	APP CRS <b>298°</b>	Rwy Idg TDZE Apt Elev	<b>6502</b> <b>875</b> <b>918</b>
--	------------------------	-----------------------------	---

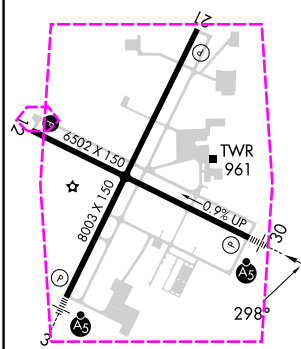
# RNAV (GPS) RWY 30

APPLETON INTL (ATW)




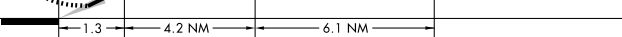
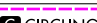
RNP APCH. For uncompensated Baro-VNAV systems, LNAV/VNAV NA below -16°C (4°F) or above 54°C (130°F).			MALSR 	MISSED APPROACH: Climb to 2600 direct ARALE and hold.
ATIS <b>127.15</b>	GREEN BAY APP CON★ <b>126.3 338.2</b>	APPLETON TOWER★ <b>119.6 (CTAF) 0</b>	GND CON <b>121.7</b>	UNICOM <b>122.95</b>



ELEV 918	D	TDZE 875
----------	---	----------



REIL Rwy 12 and 21  
HIRL Rwy 12-30 and 3-21

2600	ARALE	VGSI and RNAV glidepath not coincident (VGSI Angle 3.00/TCH 61).		4 NM Holding Pattern
		ZUMUG	APESE	
*LNAV only.	*1.3 NM to RW30	2700	298°	2700
		2700	118°	GP 3.00° TCH 50
CATEGORY	A	B	C	D
LPV DA	1075-1/2 200 (200-1/2)			
LNAV/VNAV DA	1310-1 435 (400-1)			
LNAV MDA	1320-1/2	445 (500-1/2)	1320-7/8 445 (500-7/8)	1320-1 445 (500-1)
 CIRCLING	1340-1 422 (500-1)	1380-1 462 (500-1)	1400-1 1/2 482 (500-1 1/2)	1480-2 562 (600-2)

APPLETON, WISCONSIN  
Amdt 1B 24MAY18

44°15'N-88°31'W

# RNAV (GPS) RWY 30

EC-3, 10 JUL 2025 to 07 AUG 2025

EC-3, 10 JUL 2025 to 07 AUG 2025

APPLETON, WISCONSIN

AL-5216 (FAA)

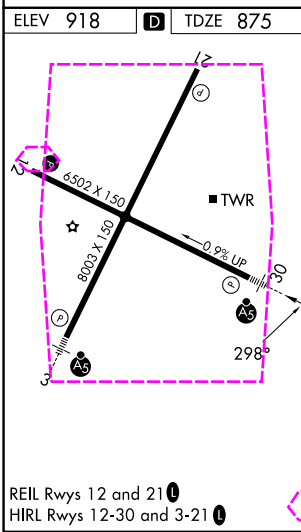
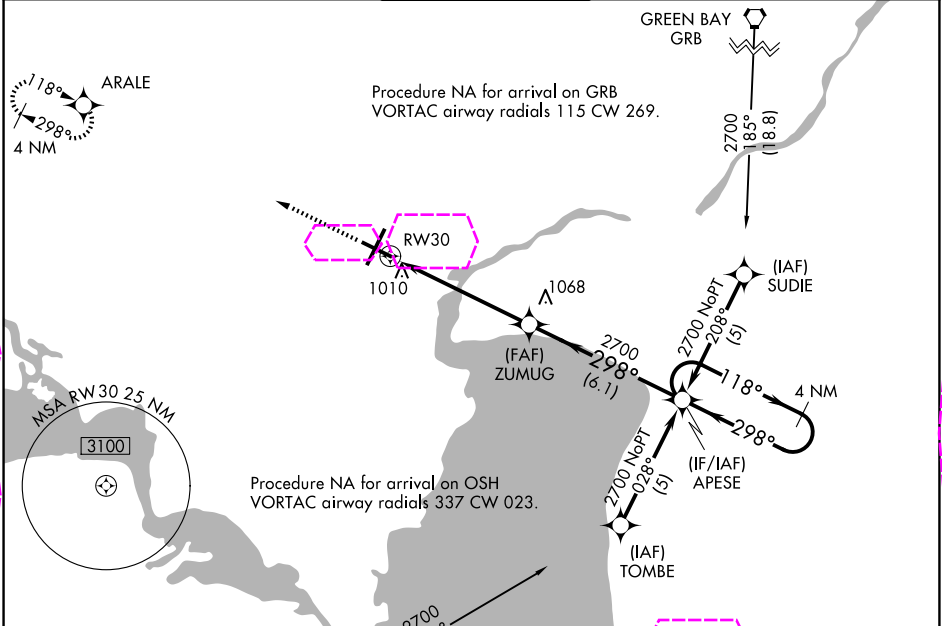
25219





WAAS CH <b>42517</b> <b>W30A</b>	APP CRS <b>298°</b>	Rwy Ldg TDZE Apt Elev	<b>6501</b> <b>875</b> <b>918</b>
--	------------------------	-----------------------------	---

# RNAV (GPS) RWY 30

APPLETON INTL (ATW)

RNP APCH. For uncompensated Baro-VNAV systems, LNAV/VNAV NA below -16°C (4°F) or above 54°C (130°F).			MALSR 	MISSED APPROACH: Climb to 2600 direct ARALE and hold.
ATIS <b>127.15</b>	GREEN BAY APP CON★ <b>126.3 338.2</b>	APPLETON TOWER★ <b>119.6 (CTAF) 0</b>	GND CON <b>121.7</b>	UNICOM <b>122.95</b>



2600	ARALE	VGSI and RNAV glidepath not coincident (VGSI Angle 3.00/TCH 61).		4 NM Holding Pattern
		ZUMUG	APESE	
*LNAV only.		2700	298°	2700
	*1.3 NM to RW30		118°	2700
		2700	← 298°	GP 3.00° TCH 50
1.3		4.2 NM	6.1 NM	
CATEGORY	A	B	C	D
LPV DA	1075-1/2 200 (200-1/2)			
LNAV/VNAV DA	1310-1 435 (400-1)			
LNAV MDA	1320-1/2	445 (500-1/2)	1320-7/8 445 (500-7/8)	1320-1 445 (500-1)
CIRCLING	1340-1 422 (500-1)	1380-1 462 (500-1)	1400-1 1/2 482 (500-1 1/2)	1480-2 562 (600-2)

APPLETON, WISCONSIN  
Amdt 1B 24MAY18

44°15'N-88°31'W

# RNAV (GPS) RWY 30

EC-3, 07 AUG 2025 to 04 SEP 2025

EC-3, 07 AUG 2025 to 04 SEP 2025