

APPLETON, WISCONSIN

AL-5216 (FAA)

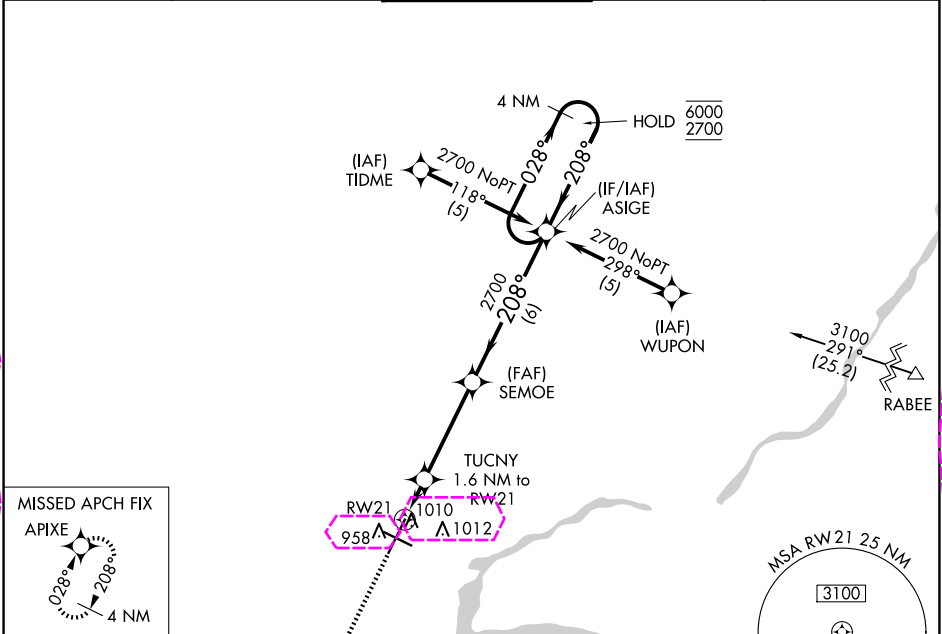
23362

WAAS CH 93517 W21A	APP CRS 208°	Rwy Idg TDZE Apt Elev	8002 879 918
--	------------------------	-----------------------------	---

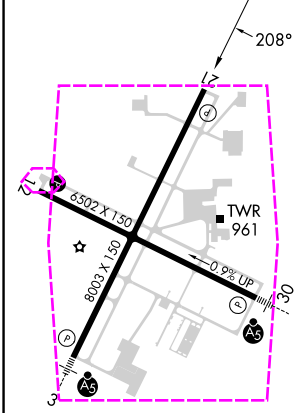
RNAV (GPS) RWY 21
APPLETON INTL (ATW)

RNP APCH - GPS.	MISSED APPROACH: Climb to 2900 direct APIXE and hold.
-----------------	---

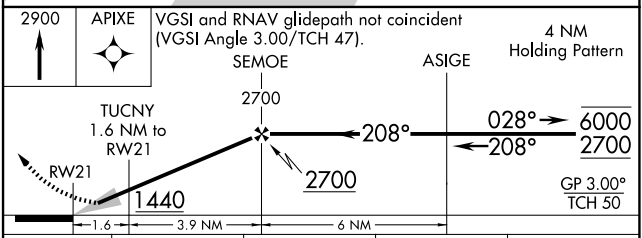
ATIS 127.15	GREEN BAY APP CON★ 126.3 338.2	APPLETON TOWER★ 119.6 (CTAF) 0	GND CON 121.7	UNICOM 122.95
-----------------------	--	--	-------------------------	-------------------------



ELEV 918	D	TDZE 879
----------	----------	----------



REIL Rwy 12 and 21
HIRL Rwy 12-30 and 3-21



CATEGORY	A	B	C	D
LPV DA	1129-3/4	250 (300-3/4)		
LNAV/VNAV DA	1261-1 1/8	382 (400-1 1/8)		
LNAV MDA	1280-1	401 (400-1)	1280-1 1/8	401 (400-1 1/8)
CIRCLING	1340-1 422 (500-1)	1380-1 462 (500-1)	1400-1 1/2 482 (500-1 1/2)	1480-2 562 (600-2)

APPLETON, WISCONSIN
Amdt 2F 28DEC23

44°15'N-88°31'W

RNAV (GPS) RWY 21

EC-3, 10 JUL 2025 to 07 AUG 2025

EC-3, 10 JUL 2025 to 07 AUG 2025

WAAS CH 93517 W21A	APP CRS 208°	Rwy Ldg TDZE Apt Elev	8002 879 918
--	------------------------	-----------------------------	---

RNAV (GPS) RWY 21
APPLETON INTL (ATW)

RNP APCH - GPS.	
-----------------	--

T
A For uncompensated Baro-VNAV systems,
LNAV/VNAV NA below -16°C or above 47°C.

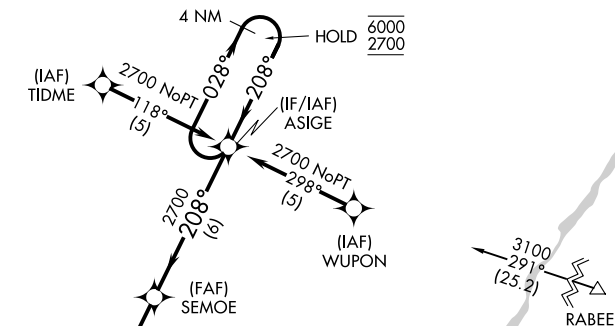
MISSED APPROACH: Climb to 2900 direct APIXE and hold.

ATIS
127.15

GREEN BAY APP CON★
126.3 338.2

APPLETON TOWER★
119.6(CTAF) L

GND CON
121.7

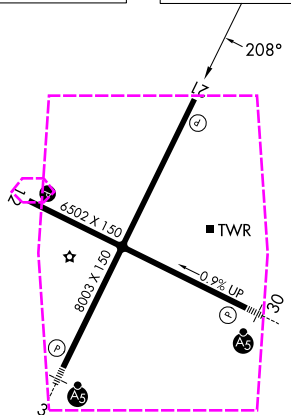
UNICOM
122.95

MISSED APCH FIX
APIXE

028° 208°
4 NM



ELEV 918	D	TDZE 879
----------	----------	----------



REIL Rwys 12 and 21 **L**
HIRL Rwys 12-30 and 3-21 **L**

2900
↑
APIXE
VGS and RNAV glidepath not coincident
(VGS Angle 3.00/TCH 47).
SEMOE
ASIGE
4 NM
Holding Pattern
TUCNY
1.6 NM to
RW21
RW21
1440
1.6
3.9 NM
6 NM
2700
208°
028°
6000
2700
GP 3.00°
TCH 50

CATEGORY	A	B	C	D
LPV DA	1129-3/4 250 (300-3/4)			
LNAV/VNAV DA	1261-1 1/8 382 (400-1 1/8)			
LNAV MDA	1280-1 401 (400-1)		1280-1 1/8 401 (400-1 1/8)	
CIRCLING	1340-1 422 (500-1)	1380-1 462 (500-1)	1400-1 1/2 482 (500-1 1/2)	1480-2 562 (600-2)

APPLETON, WISCONSIN
Amdt 2F 28DEC23

APPLETON INTL (ATW)

44°15'N-88°31'W

RNAV (GPS) RWY 21

EC-3, 07 AUG 2025 to 04 SEP 2025

EC-3, 07 AUG 2025 to 04 SEP 2025