

APPLETON, WISCONSIN

AL-5216 (FAA)

23362

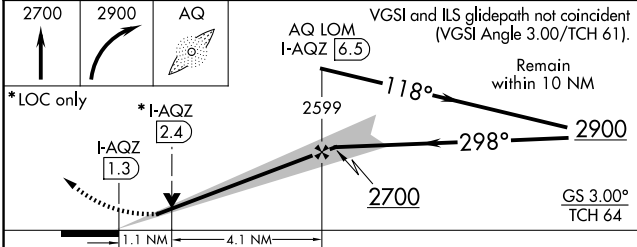
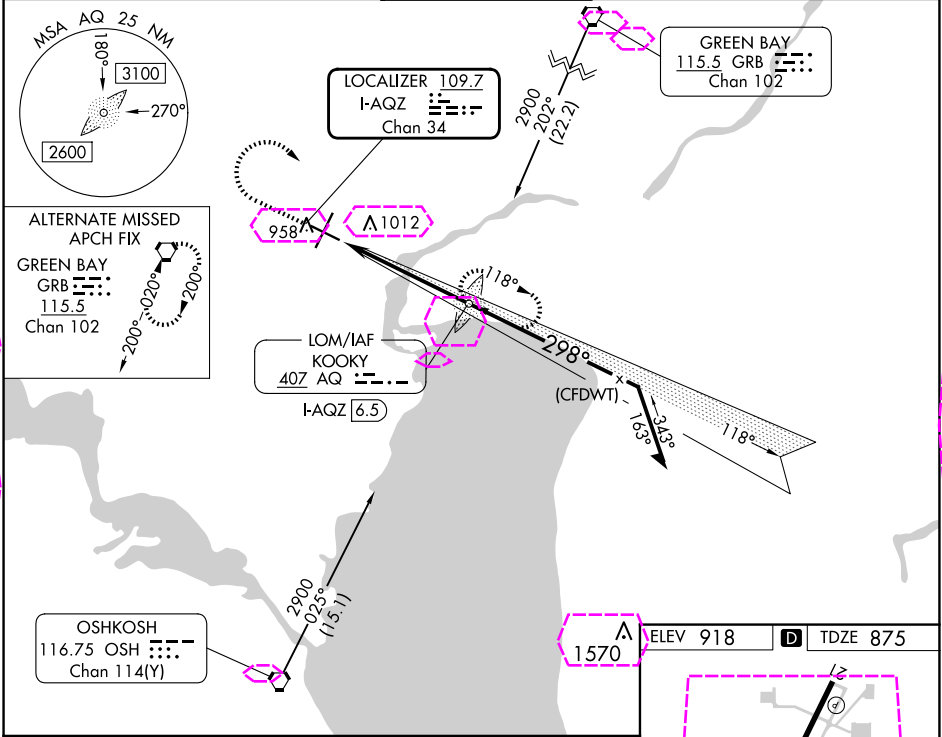
LOC/DME I-AQZ 109.7 Chan 34	APP CRS 298°	Rwy Idg TDZE Apt Elev	6502 875 918
---	------------------------	-----------------------------	---

ILS or LOC RWY 30

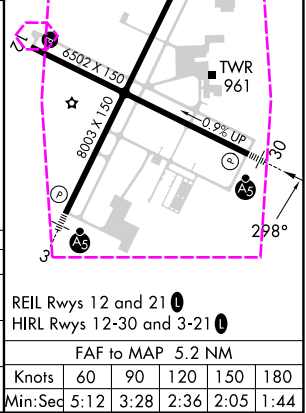
APPLETON INTL (ATW)

ADF required. ▼ ▲ NA	MALSR A5	MISSED APPROACH: Climb to 2700 then climbing right turn to 2900 direct KOOKY LOM/I-AQZ 6.5 DME and hold.
----------------------------	-------------	--

ATIS 127.15	GREEN BAY APP CON★ 126.3 338.2	APPLETON TOWER★ 119.6 (CTAF) 0	GND CON 121.7	UNICOM 122.95
-----------------------	--	--	-------------------------	-------------------------



CATEGORY	A	B	C	D
S-ILS 30	1075-½	200 (200-½)		
S-LOC 30	1260-½ 385 (400-½)	1260-⅝ 385 (400-⅝)		
CIRCLING	1340-1 422 (500-1)	1380-1 462 (500-1)	1400-1½ 482 (500-1½)	1480-2 562 (600-2)



APPLETON, WISCONSIN
Amdt 4 28FEB19

44°15'N-88°31'W

APPLETON INTL (ATW)
ILS or LOC RWY 30

EC-3, 10 JUL 2025 to 07 AUG 2025

EC-3, 10 JUL 2025 to 07 AUG 2025

LOC/DME I-AQZ 109.7 Chan 34	APP CRS 298°	Rwy Ldg TDZE Apt Elev	6501 875 918
---	------------------------	-----------------------------	---

ILS or LOC RWY 30

APPLETON INTL (ATW)

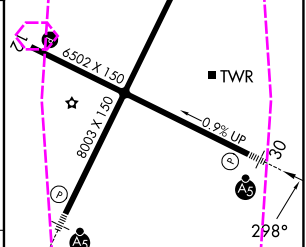
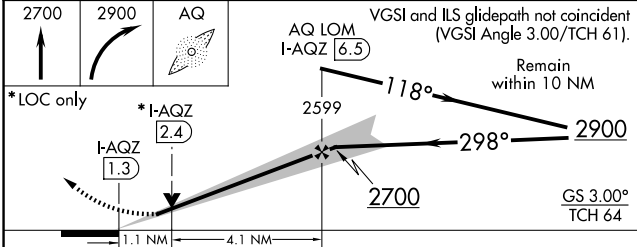
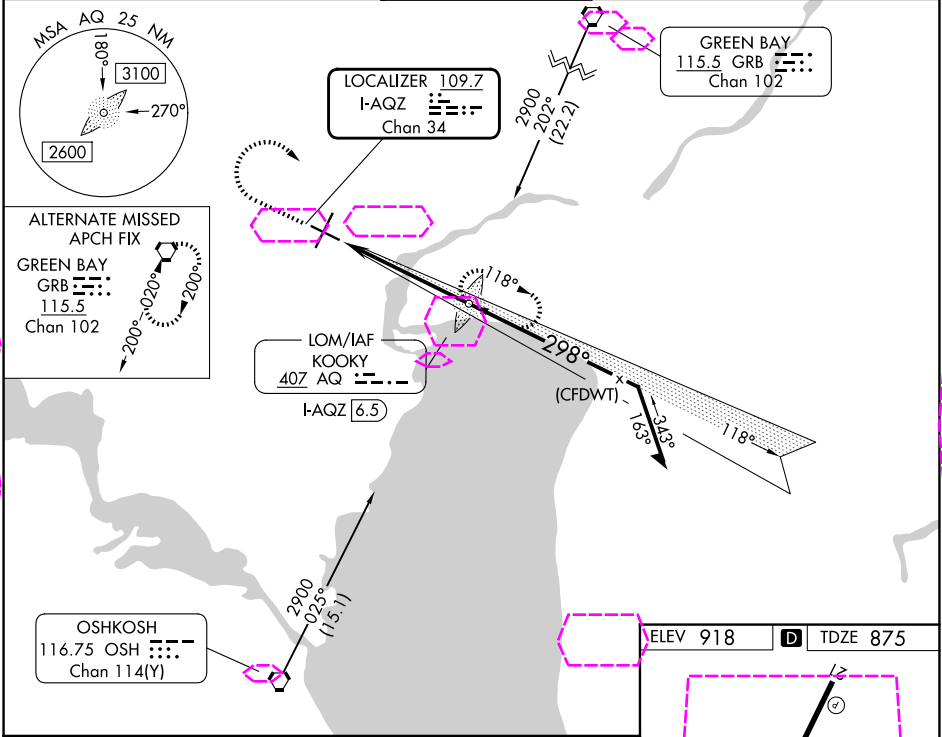
ADF required.

▼
NA

MALSR

MISSED APPROACH: Climb to 2700 then climbing right turn to 2900 direct KOOKY LOM/I-AQZ 6.5 DME and hold.

ATIS 127.15	GREEN BAY APP CON★ 126.3 338.2	APPLETON TOWER★ 119.6 (CTAF) 0	GND CON 121.7	UNICOM 122.95
-----------------------	--	--	-------------------------	-------------------------



CATEGORY	A	B	C	D
S-ILS 30	1075-½		200 (200-½)	
S-LOC 30	1260-½ 385 (400-½)		1260-⅝ 385 (400-⅝)	
CIRCLING	1340-1 422 (500-1)	1380-1 462 (500-1)	1400-1½ 482 (500-1½)	1480-2 562 (600-2)

REIL Rwy 12 and 21 0
HIRL Rwy 12-30 and 3-21 0

FAF to MAP 5.2 NM

Knots	60	90	120	150	180
Min:Seq	5:12	3:28	2:36	2:05	1:44