

WAAS CH 93629 W03A	APP CRS 030°	Rwy Idg TDZE Apt Elev	5792 764 764
--	------------------------	-----------------------------	---

RNAV (GPS) RWY 3
GALESBURG MUNI (GBG)

RNP APCH - GPS.	
-----------------	--

T For uncompensated Baro-VNAV systems, LNAV/VNAV NA below -16°C or above 54°C. For inop ALS, increase LNAV/VNAV visibility to 3/8 all Cats and LNAV Cats C/D to 1 SM.

MALSR

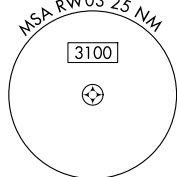
MISSED APPROACH: Climb to 3000 direct EJIYU and hold.

AWOS-3
118.975

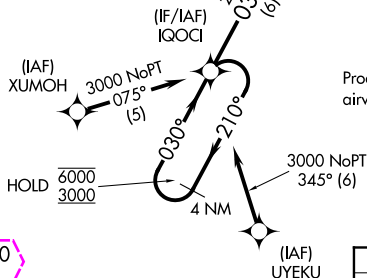
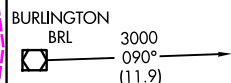
QUAD CITY APP CON ★
133.275 257.8

CLNC DEL
120.7

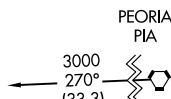
UNICOM
123.0 (CTAF) **L**



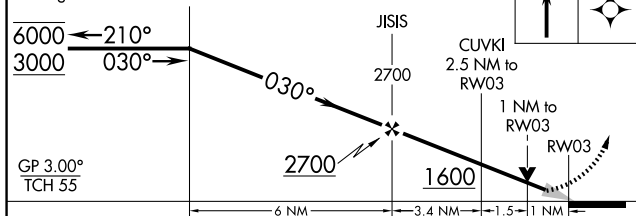
Procedure NA for arrival on BRL VOR/DME
airway radials 015 CW 161.



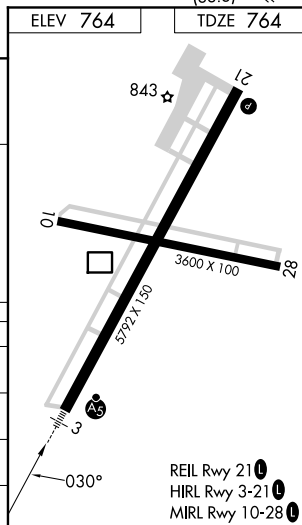
Procedure NA for arrival on PIA VORTAC
airway radials 230 CW 329.



4 NM	
Holding Pattern	QOC



CATEGORY	A	B	C	D
LPV DA	964- ¹ / ₂ 200 (200- ¹ / ₂)			
LNAV/ VNAV DA	1060- ¹ / ₂ 296 (300- ¹ / ₂)			
LNAV MDA	1140- ¹ / ₂ 376 (400- ¹ / ₂)		1140- ⁵ / ₈ 376 (400- ⁵ / ₈)	
C CIRCLING	1220-1	456 (500-1)	1380- ¹ / ₄ 616 (700- ¹ / ₄)	1620-2 ³ / ₄ 856 (900-2 ³ / ₄)



GALESBURG, ILLINOIS
Orig-C 19MAY22

40°56'N-90°26'W

GALESBURG MUNI (GBG)

RNAV (GPS) RWY 3

EC-3, 10 JUL 2025 to 07 AUG 2025

EC-3, 10 JUL 2025 to 07 AUG 2025

GALESBURG, ILLINOIS

AL-5214 (FAA)

25219

WAAS CH 93629 W03A	APP CRS 030°	Rwy Ldg TDZE 764 Apt Elev 764	5792 764 764
--	------------------------	---	---

RNAV (GPS) RWY 3

HARREL W TIMMONS GALESBURG RGNL (GBG)

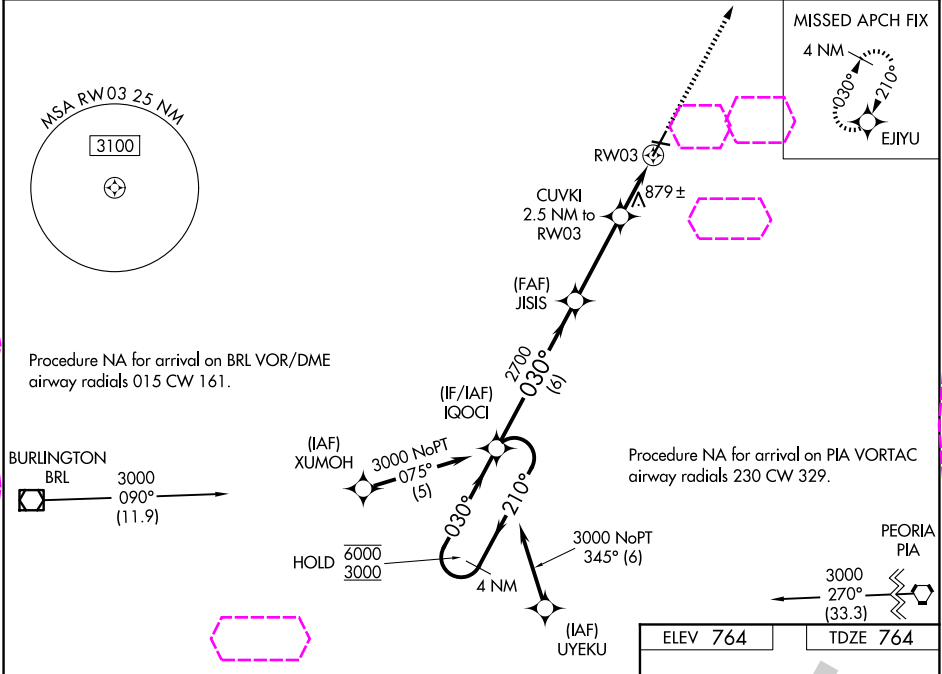
RNP APCH - GPS.

▼ For uncompensated Baro-VNAV systems, LNAV/VNAV NA below -16°C or above 54°C. For inop ALS, increase LNAV/VNAV visibility to ¾ all Cats and LNAV Cats C/D to 1 SM.
▲

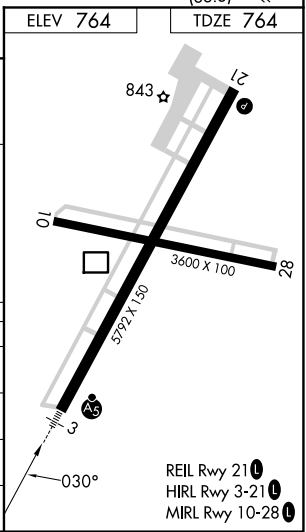


MISSED APPROACH: Climb to 3000 direct EIYU and hold.

AWOS-3 118.975	QUAD CITY APP CON ★ 133.275 257.8	CLNC DEL 120.7	UNICOM 123.0 (CTAF) 1
--------------------------	---	--------------------------	--



4 NM Holding Pattern		IQOCI		3000 EIYU	
6000 ← 210°		3000 → 030°		↑	
GP 3.00° TCH 55		JISIS 2700		CUVKI 2.5 NM to RW03	
		2700 030°		1 NM to RW03	
		6 NM		RW03	
		3.4 NM		1.5 NM	
		1 NM			
CATEGORY		A	B	C	D
LPV DA			964-1½	200 (200-1½)	
LNAV/VNAV DA			1060-1½	296 (300-1½)	
LNAV MDA		1140-1½	376 (400-1½)	1140-5/8	376 (400-5/8)
CIRCLING		1220-1	456 (500-1)	1380-1¾ 616 (700-1¾)	1620-2¾ 856 (900-2¾)



GALESBURG, ILLINOIS
Orig-C 19MAY22

40°56'N-90°26'W

HARREL W TIMMONS GALESBURG RGNL (GBG)

RNAV (GPS) RWY 3

EC-3, 07 AUG 2025 to 04 SEP 2025

EC-3, 07 AUG 2025 to 04 SEP 2025