

GALESBURG, ILLINOIS

AL-5214 (FAA)

23222

WAAS CH <b>50428</b> <b>W21A</b>	APP CRS <b>210°</b>	Rwy Idg TDZE Apt Elev	<b>5792</b> <b>764</b> <b>764</b>
--	------------------------	-----------------------------	---

# RNAV (GPS) RWY 21

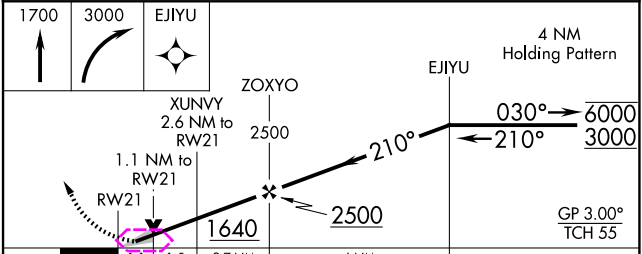
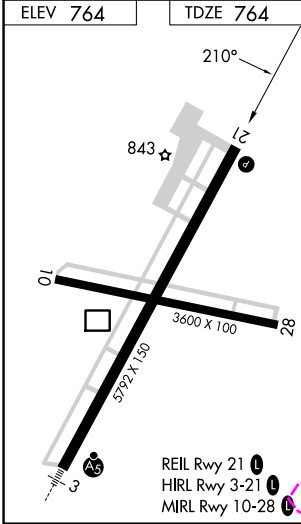
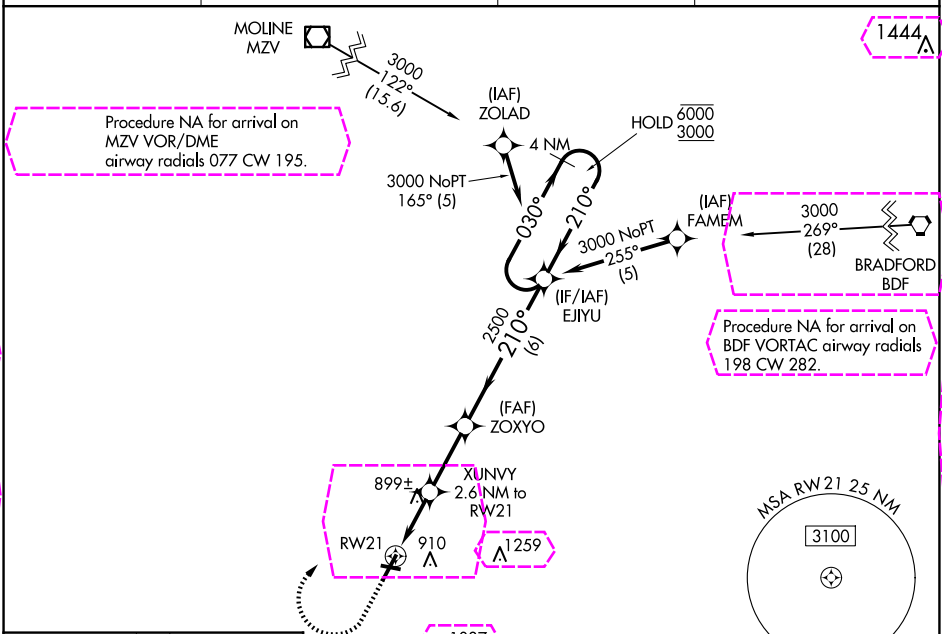
GALESBURG MUNI (GBG)

RNP APCH - GPS.

For uncompensated Baro-VNAV systems, LNAV/VNAV NA below -16°C or above 54°C.

MISSED APPROACH: Climb to 1700 then climbing right turn to 3000 direct EJIYU and hold.

AWOS-3 <b>118.975</b>	QUAD CITY APP CON ★ <b>133.275 257.8</b>	CLNC DEL <b>120.7</b>	UNICOM <b>123.0</b> (CTAF)
--------------------------	---	--------------------------	-------------------------------



CATEGORY	A	B	C	D
LPV DA	964-3/4 200 (200-3/4)			
LNAV/VNAV DA	1060-7/8 296 (300-7/8)			
LNAV MDA	1160-1	396 (400-1)	1160-1 1/8	396 (400-1 1/8)
CIRCLING	1220-1	456 (500-1)	1380-1 3/4 616 (700-1 3/4)	1620-2 3/4 856 (900-2 3/4)

GALESBURG, ILLINOIS  
Orig-C 19MAY22

40°56'N-90°26'W

# RNAV (GPS) RWY 21

GALESBURG MUNI (GBG)

GALESBURG, ILLINOIS

AL-5214 (FAA)

25219

WAAS CH <b>50428</b> <b>W21A</b>	APP CRS <b>210°</b>	Rwy Ldg TDZE Apt Elev	<b>5792</b> <b>764</b> <b>764</b>
--	------------------------	-----------------------------	---

# RNAV (GPS) RWY 21

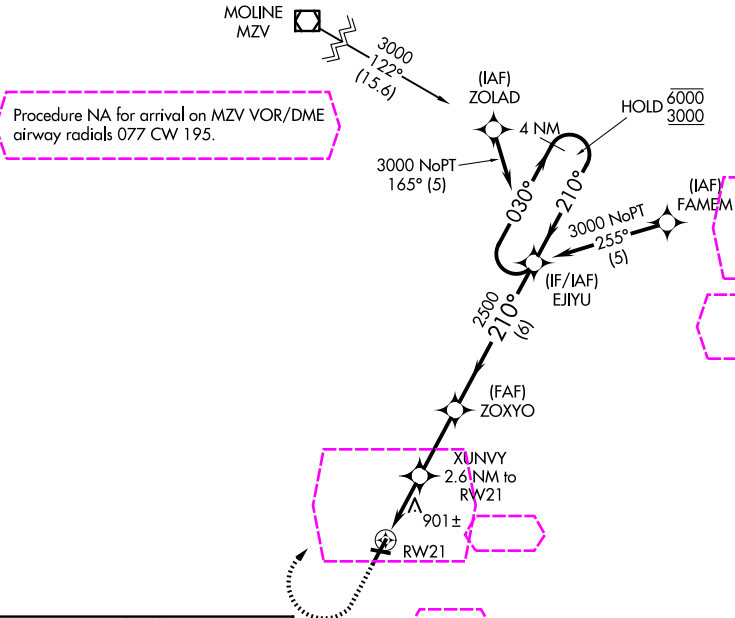
HARREL W TIMMONS GALESBURG RGNL (GBG)

RNP APCH - GPS.

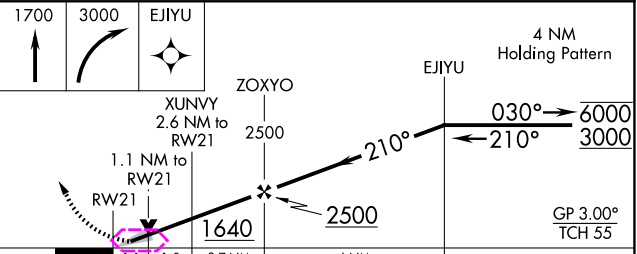
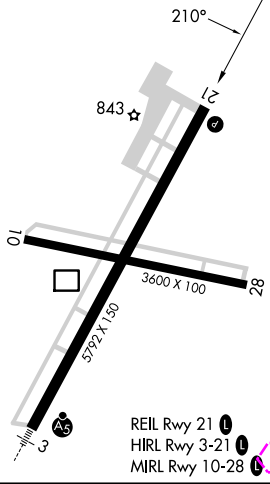
MISSED APPROACH: Climb to 1700 then climbing right turn to 3000 direct EJYU and hold.

For uncompensated Baro-VNAV systems, LNAV/VNAV NA below -16°C or above 54°C.

AWOS-3 <b>118.975</b>	QUAD CITY APP CON ★ <b>133.275 257.8</b>	CLNC DEL <b>120.7</b>	UNICOM <b>123.0 (CTAF)</b>
--------------------------	---	--------------------------	-------------------------------



ELEV 764	TDZE 764
----------	----------



CATEGORY	A	B	C	D
LPV DA	964-3/4 200 (200-3/4)			
LNAV/VNAV DA	1155-1 391 (400-1 1/8)			
LNAV MDA	1160-1	396 (400-1)	1160-1 1/8	396 (400-1 1/8)
CIRCLING	1220-1	456 (500-1)	1380-1 3/4	1620-2 3/4

GALESBURG, ILLINOIS  
Amdt 1 07AUG25

HARREL W TIMMONS GALESBURG RGNL (GBG)

40°56'N-90°26'W

# RNAV (GPS) RWY 21

EC-3, 07 AUG 2025 to 04 SEP 2025

EC-3, 07 AUG 2025 to 04 SEP 2025