

GALESBURG, ILLINOIS

AL-5214 (FAA)

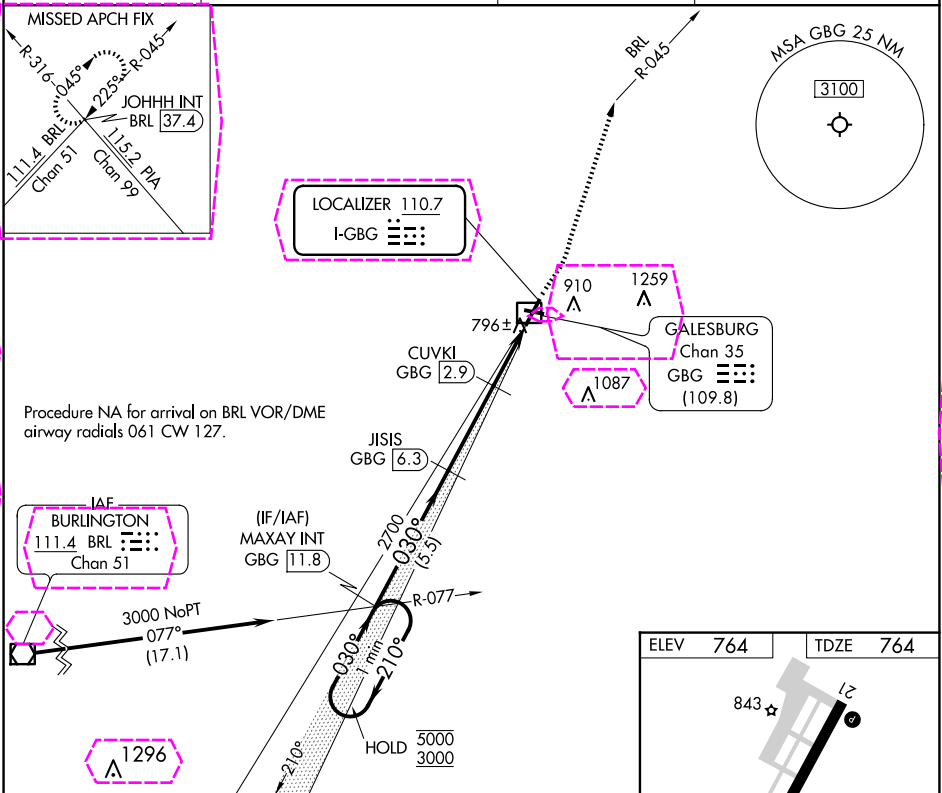
23222

LOC I-GBG	APP CRS	Rwy Idg	5792
110.7	030°	TDZE	764
		Apt Elev	764

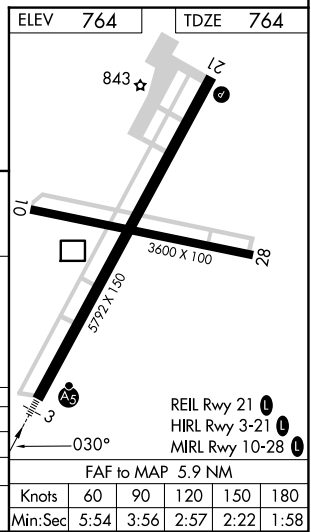
ILS or LOC RWY 3  
GALESBURG MUNI (GBG)

DME required. ▼ ▲ NA	For inop ALS, increase S-LOC 3 Cat C/D visibility to ½ SM. DME from GBG DME. DME use requires simultaneous reception of I-GBG and GBG DME.	MALSR A5	MISSED APPROACH: Climb to 1200 then climbing left turn to 3000 on heading 020° and BRL VOR/DME R-045 to JOHHH INT/ BRL 37.4 DME and hold.
----------------------------	---	-------------	---

AWOS-3 118.975	QUAD CITY APP CON ★ 133.275 257.8	CLNC DEL 120.7	UNICOM 123.0 (CTAF) 1
-------------------	--------------------------------------	-------------------	--------------------------



One Minute Holding Pattern	MAXAY INT GBG 11.8	1200	3000	BRL R-045	JOHHH INT
5000 ← 210°	030° →	2700	1600	CUVKI GBG 2.9	GBG 1.2
GS 3.00° TCH 55					
	5.5 NM	3.4 NM	1.7 NM	0.8 NM	
CATEGORY	A	B	C	D	
S-ILS 3		964-½	200 (200-½)		
S-LOC 3		1060-½	296 (300-½)		
CIRCLING	1220-1	456 (500-1)	1380-1¾ 616 (700-1¾)	1620-2¾ 856 (900-2¾)	



GALESBURG, ILLINOIS  
Amdt 11A 19MAY22

40°56'N-90°26'W

GALESBURG MUNI (GBG)  
ILS or LOC RWY 3

EC-3, 10 JUL 2025 to 07 AUG 2025

EC-3, 10 JUL 2025 to 07 AUG 2025

GALESBURG, ILLINOIS

AL-5214 (FAA)

25219

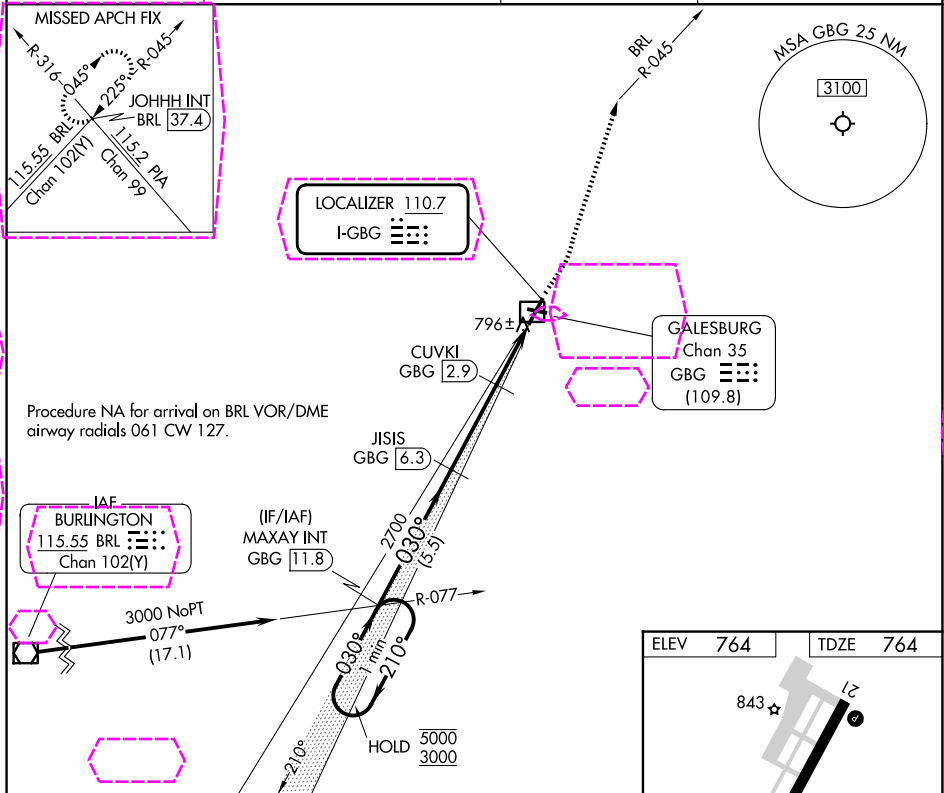
LOC I-GBG <b>110.7</b>	APP CRS <b>030°</b>	Rwy Ldg TDZE <b>764</b> Apt Elev <b>764</b>
---------------------------	------------------------	---

ILS or LOC RWY 3

HARREL W TIMMONS GALESBURG RGNL (GBG)

DME required. ▼ ▲ NA	For inop ALS, increase S-LOC 3 Cat C/D visibility to ½ SM. DME from GBG DME. DME use requires simultaneous reception of I-GBG and GBG DME.	MALSR A5	MISSED APPROACH: Climb to 1200 then climbing left turn to 3000 on heading 020° and BRL VOR/DME R-045 to JOHHH INT/ BRL 37.4 DME and hold.
----------------------------	---	-------------	---

AWOS-3 <b>118.975</b>	QUAD CITY APP CON ★ <b>133.275 257.8</b>	CLNC DEL <b>120.7</b>	UNICOM <b>123.0 (CTAF)</b> ①
--------------------------	---	--------------------------	---------------------------------



One Minute Holding Pattern		MAXAY INT GBG 11.8		1200	3000	BRL R-045	JOHHH INT
5000 ← 210° 3000 → 030°		JISIS GBG 6.3	CUVKI GBG 2.9	2700	1600	hdg 020°	
GS 3.00° TCH 55°		2700		1600			
		5.5 NM		3.4 NM	1.7 NM	0.8 NM	
CATEGORY	A		B	C		D	
S-ILS 3			964-½ 200 (200-½)				
S-LOC 3			1060-½ 296 (300-½)				
CIRCLING	1220-1 456 (500-1)		1380-1¾ 616 (700-1¾)		1620-2¾ 856 (900-2¾)		

FAF to MAP 5.9 NM					
Knots	60	90	120	150	180
Min:Sec	5:54	3:56	2:57	2:22	1:58

GALESBURG, ILLINOIS  
Amdt 11A 19MAY22

40°56'N-90°26'W

HARREL W TIMMONS GALESBURG RGNL (GBG)

ILS or LOC RWY 3

EC-3, 07 AUG 2025 to 04 SEP 2025

EC-3, 07 AUG 2025 to 04 SEP 2025