

ARLINGTON, TEXAS

AL-5189 (FAA)

24305

WAAS CH 93827 W34A	APP CRS 342°	Rwy Idg 6080 TDZE 620 Apt Elev 628
--	------------------------	---

RNAV (GPS) RWY 34

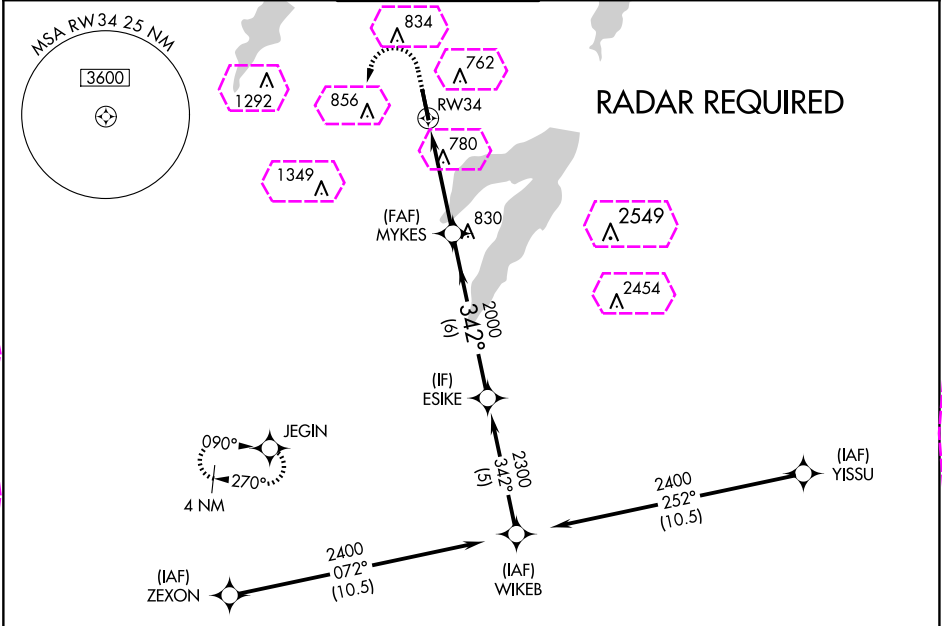
ARLINGTON MUNI (GKY)

When local altimeter setting not received, use Grand Prairie Muni altimeter setting.
For uncompensated Baro-VNAV systems, LNAV/VNAV NA below -16°C (4°F) or above 54°C (130°F). DME/DME RNP-0.3 NA. Inop table does not apply to LPV.
For inop MALSR increase LNAV Cat A, B visibility to 1 mile.

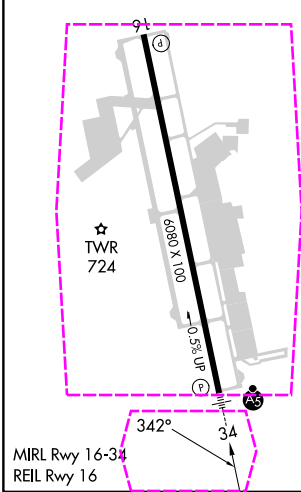
MALSR




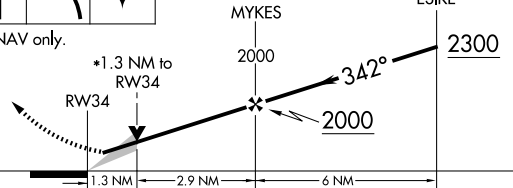
MISSED APPROACH: Climb to 1100 then climbing left turn to 2800 direct JEGIN and hold.

ASOS 127.375	LONE STAR APP CON 135.975 379.9	ARLINGTON TOWER ★ 128.625 (CTAF)	GND CON 121.875	CLNC DEL 121.875	CLNC DEL 118.85 (When twr closed)
------------------------	---	--	---------------------------	----------------------------	--



ELEV 628	TDZE 620
-----------------	-----------------



1100	2800	JEGIN	VGSI and RNAV glidepath not coincident (VGSI Angle 3.00/TCH 55).		
					
*LNAV only.					
					
GP 3.00° TCH 60					
CATEGORY	A		B	C	D
LPV DA	820-¾		200 (200-¾)		NA
LNAV/ VNAV	1021-¾		401 (400-¾)		NA
LNAV MDA	1060-¾		440 (500-¾)		NA
CIRCLING	1100-1 472 (500-1)	1140-1 512 (600-1)	1220-1½ 592 (600-1½)		NA

ARLINGTON, TEXAS

AL-5189 (FAA)

25219

WAAS CH 93827 W34A	APP CRS 342°	Rwy Ldg TDZE 620 Apt Elev 628
--	------------------------	---

RNAV (GPS) RWY 34

ARLINGTON MUNI (GKY)

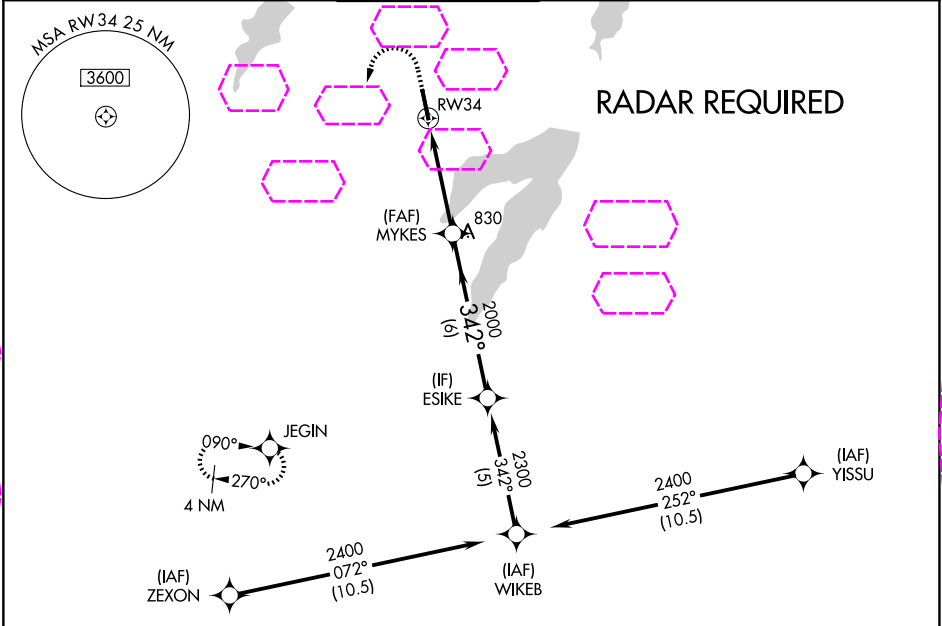
⚠

When local altimeter setting not received, use Grand Prairie Muni altimeter setting. For uncompensated Baro-VNAV systems, LNAV/VNAV NA below -16°C (4°F) or above 54°C (130°F). DME/DME RNP-0.3 NA. Inop table does not apply to LPV. For inop MALSR increase LNAV Cat A, B visibility to 1 mile.

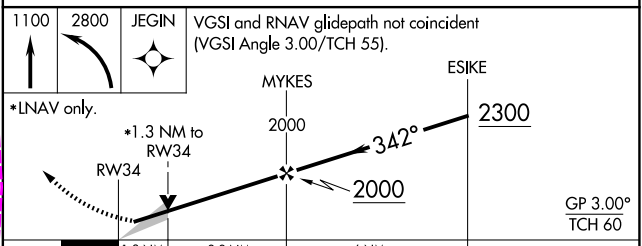
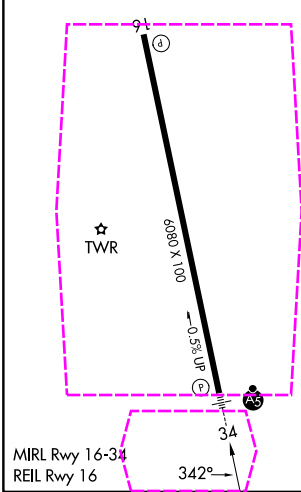
MALSR

MISSED APPROACH: Climb to 1100 then climbing left turn to 2800 direct JEGIN and hold.

ASOS 127.375	LONE STAR APP CON 135.975 379.9	ARLINGTON TOWER ★ 128.625 (CTAF) 0	GND CON 121.875	CLNC DEL 121.875	CLNC DEL 118.85 (When twr closed)
------------------------	---	--	---------------------------	----------------------------	--



ELEV 628	TDZE 620
-----------------	-----------------



CATEGORY	A	B	C	D
LPV DA	820- ³ / ₄	200 (200- ³ / ₄)		NA
LNAV/VNAV DA	1021- ³ / ₄	401 (400- ³ / ₄)		NA
LNAV MDA	1060- ³ / ₄	440 (500- ³ / ₄)		NA
CIRCLING	1100-1 472 (500-1)	1140-1 512 (600-1)	1220-1½ 592 (600-1½)	NA

ARLINGTON, TEXAS
Amdt 3D 15JUL21

32°40'N-97°06'W

ARLINGTON MUNI (GKY)
RNAV (GPS) RWY 34

SC-2, 07 AUG 2025 to 04 SEP 2025

SC-2, 07 AUG 2025 to 04 SEP 2025