

ARLINGTON, TEXAS

AL-5189 (FAA)

25163

APP CRS	Rwy Ldg	6080
149°	TDZE	628
	Apt Elev	628

# RNAV (GPS) RWY 16

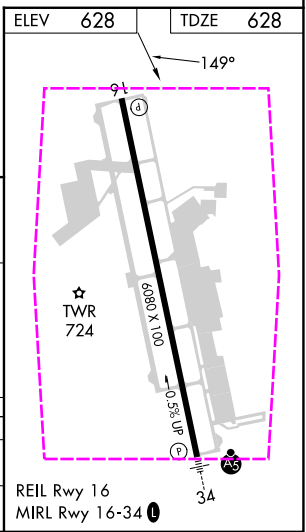
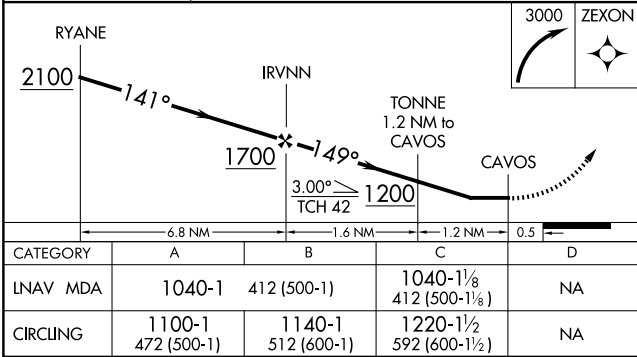
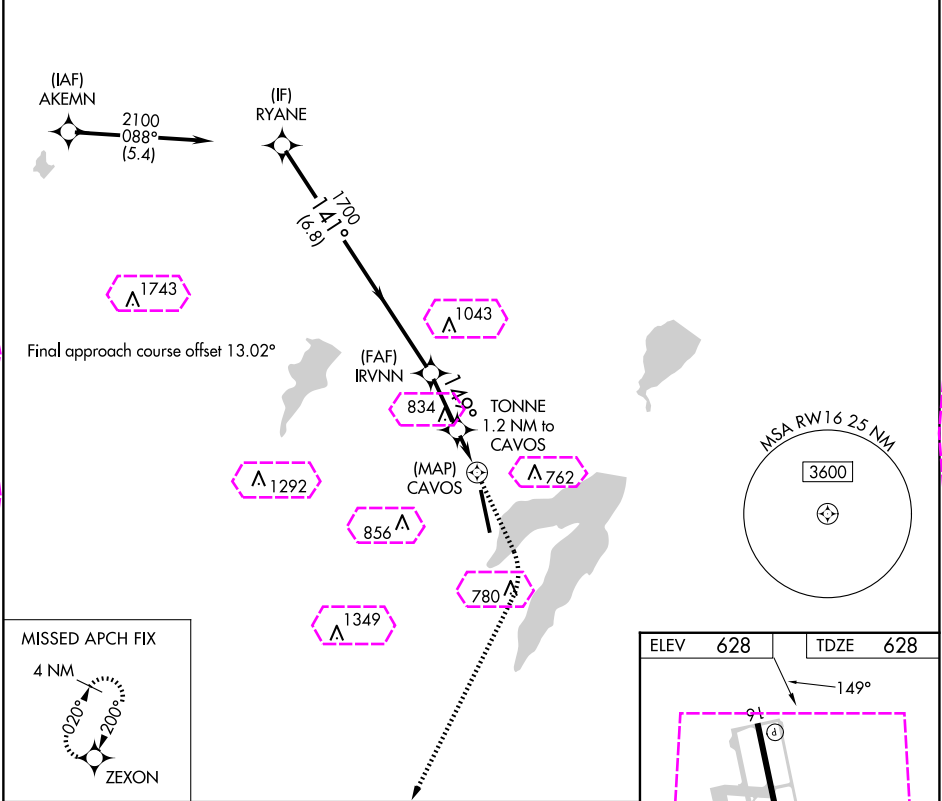
ARLINGTON MUNI (GKY)

RNP APCH - GPS.

Rwy 16 helicopter visibility reduction below 3/4 SM NA.

MISSED APPROACH: Climbing right turn to 3000 direct ZEXON and hold.

ASOS 127.375	LONE STAR APP CON 135.975 379.9	ARLINGTON TOWER ★ 128.625 (CTAF) 0	GND CON 121.875	CLNC DEL 121.875	CLNC DEL 118.85 (When twr closed)
-----------------	------------------------------------	---------------------------------------	--------------------	---------------------	---



ARLINGTON, TEXAS

AL-5189 (FAA)

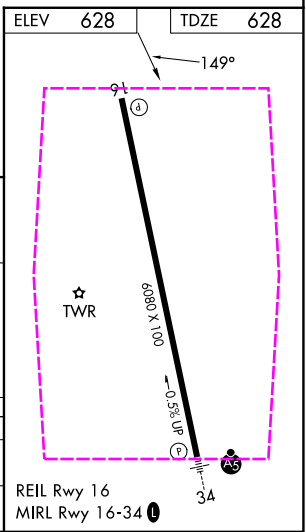
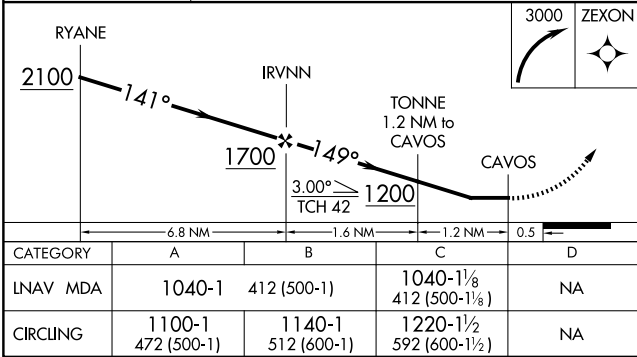
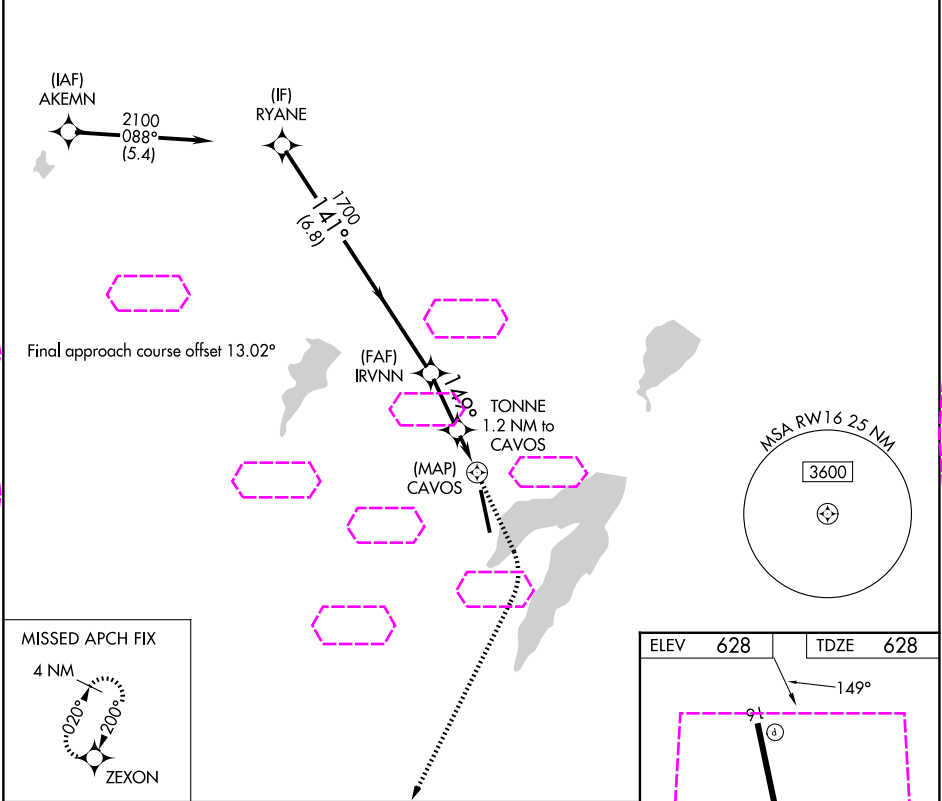
25219

APP CRS	Rwy Ldg	6080
149°	TDZE	628
	Apt Elev	628

# RNAV (GPS) RWY 16

ARLINGTON MUNI (GKY)

RNP APCH - GPS.			MISSED APPROACH: Climbing right turn to 3000 direct ZEXON and hold.		
Rwy 16 helicopter visibility reduction below ¾ SM NA.					
ASOS 127.375	LONE STAR APP CON 135.975 379.9	ARLINGTON TOWER ★ 128.625 (CTAF) 0	GND CON 121.875	CLNC DEL 121.875	CLNC DEL 118.85 (When twr closed)



SC-2, 07 AUG 2025 to 04 SEP 2025

SC-2, 07 AUG 2025 to 04 SEP 2025