

(JPOOL7, TTT) 24305

AL-5189 (FAA)

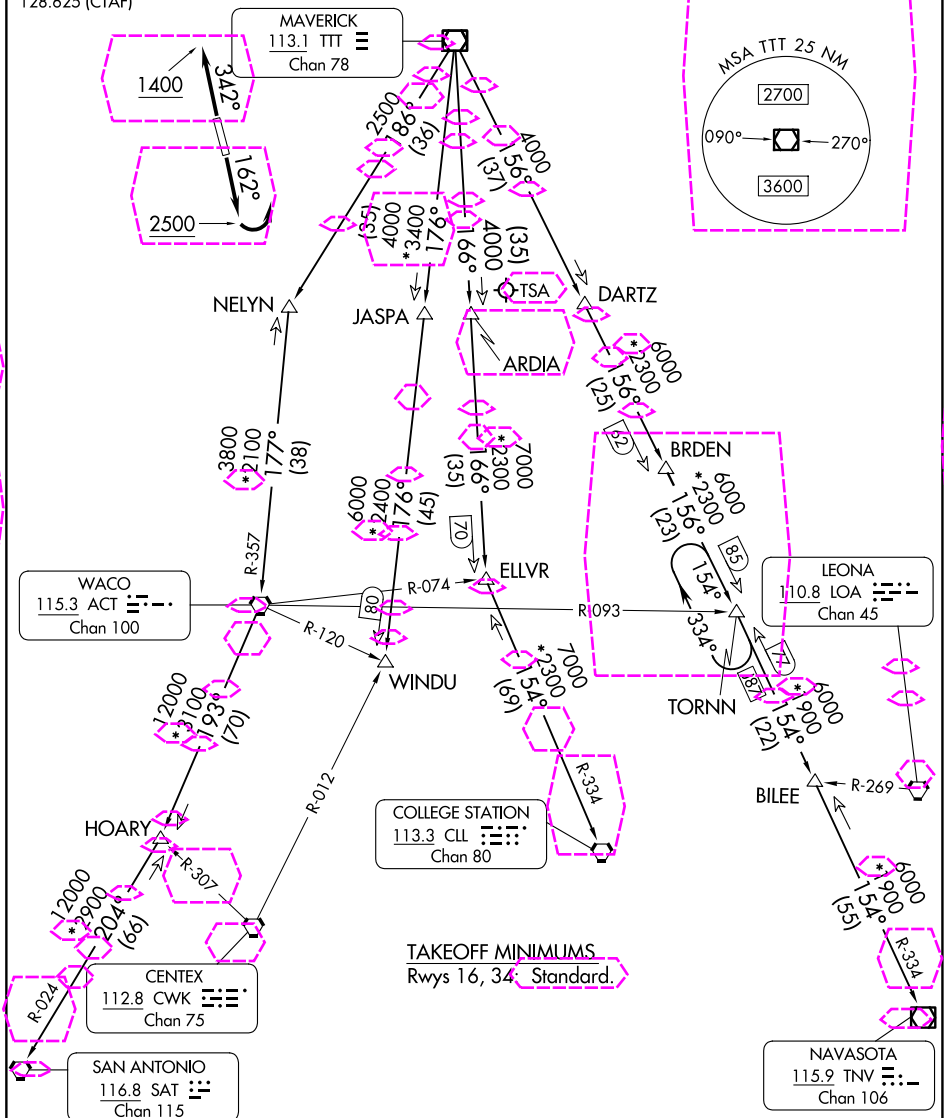
JOE POOL SEVEN DEPARTURE

ARLINGTON MUNI (GKY)
ARLINGTON, TEXAS

LONE STAR DEP CON
135.975 379.9
CLNC DEL
121.875
CLNC DEL (when twr closed)
118.85
GND CON
121.875
ARLINGTON TOWER ★
128.625 (CTAF)

RADAR and DME required.

**TOP ALTITUDE:
ASSIGNED BY ATC**



(CONTINUED ON FOLLOWING PAGE)

JOE POOL SEVEN DEPARTURE

(JPOOL7, TTT) 25JAN24

ARLINGTON, TEXAS
ARLINGTON MUNI (GKY)

SC-2, 10 JUL 2025 to 07 AUG 2025

SC-2, 10 JUL 2025 to 07 AUG 2025

(JPOOL8, TTT) 25219

AL-5189 (FAA)

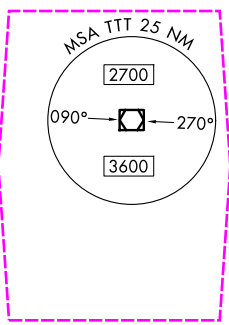
ARLINGTON MUNI (GKY)
ARLINGTON, TEXAS

JOE POOL EIGHT DEPARTURE

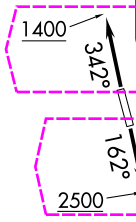
LONE STAR DEP CON
135.975 379.9
CLNC DEL
121.875
CLNC DEL (When twr closed)
118.85
GND CON
121.875
ARLINGTON TOWER ★
128.625 (CTAF)

RADAR and DME required.

TOP ALTITUDE:
ASSIGNED BY ATC



MAVERICK
113.1 TTT
Chan 78



NELYN

JASPA

TSA

DARTZ

ARDIA

WACO
115.3 ACT
Chan 100

LEONA
110.8 LOA
Chan 45

ELLVR

TORN

BILEE

HOARY

COLLEGE STATION
113.3 CLL
Chan 80

CENTEX
112.8 CWK
Chan 75

SAN ANTONIO
116.8 SAT
Chan 115

NAVASOTA
115.9 TNV
Chan 106

TAKEOFF MINIMUMS
Rwys 16, 34: Standard.

(CONTINUED ON FOLLOWING PAGE)

NOTE: Chart not to scale.

JOE POOL EIGHT DEPARTURE

(JPOOL8, TTT) 07AUG25

ARLINGTON, TEXAS
ARLINGTON MUNI (GKY)

SC-2, 07 AUG 2025 to 04 SEP 2025

SC-2, 07 AUG 2025 to 04 SEP 2025